

# CRN Auctions, Inc.

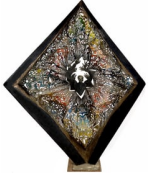


CRN ANNUAL FALL AUCTION

---

Sunday - October 20, 2024

## CRN ANNUAL FALL AUCTION



### 1: ERNEST MORENON, NA (American/ French, 1904-2003) STEEL SCULPTURE

USD 7,000 - 10,000

THE CONDUCTORsgn./initialed in the fretwork EMWelded steel and enamel; 3-dimensional triangular shape mounted on metal base; 84 in. h x 62 in. w x 20 in. dProvenance: This entire collection of works from the estate of Ernest Morenon, per Pierre Morenon, son of Ernest Morenon, Providence, RI. Morenon was elected to the National Academy of Design 1971 and 1978. Morenon studied at the Paris Ecole des Beaux-Arts where he was a student of Jules Coutan and Paul Landowski. In 1925 he received first prize at the Bridan Prize competition. In 1933 he was second at the Grand Prix of Rome. He died January 30, 2003 on the eve of his 99th birthday in Providence, RI. NOTE: Apologies, we cannot approve bidders during the auction.



### 1A: MORENON PRELIMINARY STUDIES FOR STEEL SCULPTURES

USD 200 - 300

approx. 25 colored drawings, incl. The Conductor (lot #1)schematic sketches on vellum in a sketchbook which measures 24" by 19" Provenance: This entire collection of works from the estate of Ernest Morenon, per Pierre Morenon, son of Ernest Morenon, Providence, RI. NOTE: Apologies, we cannot approve bidders during the auction.



### 1B: STUDIES FOR STEEL SCULPTURES

USD 200 - 300

various sizes and mediums



### 2: ERNEST MORENON, N.A. (American/ French, 1904-2003) STEEL SCULPTURE

USD 4,000 - 6,000

ETERNO CONFLICTTrepresenting a galactic explosioninitialed on base EWEwelded steel with applied gilt enhancement; 45"h; 24"w; 27"d Go to the National Academy of Design's website to see Morenon's works in their archives: [nationalacademy.emuseum.com](http://nationalacademy.emuseum.com)Morenon throughout his life received extensive commissions for stone and bronze religious sculptures. Interestingly, he was not a religious man. Works such as this express a profound aspect of his inner self. NOTE: Apologies, we cannot approve bidders during the auction.



### 3: ERNEST E. MORENON, N.A. (American/ French, 1904 - 2003) BRONZE

USD 800 - 1,200

REMEMBERTwo World War II soldierscast bronze; 15.5"h; 7"w; 5.5"dThis bronze was a study for a War Memorial competition which was never realized. Morenon served in the French army during WWII. He was assigned to paint the runways of Southern France in camouflage. NOTE: Apologies, we cannot approve bidders during the auction.



### 4: (11) ERNEST MORENON, N.A. (American/ French, 1904 - 2003) DRAWINGS

USD 500 - 700

nude drawings, Morenon's favorite female modelvarious mediums incl. ink, charcoal, pencilunframed, various sizes ranging from 20 by 15 in., the smallest 18 by 11.5 in. NOTE: Apologies, we cannot approve bidders during the auction.



### 5: (on 10) ERNEST MORENON FEMALE NUDE SKETCHES

USD 400 - 600

various types of paper, charcoal and ink; the majority approx. 18 by 24 in.

## CRN ANNUAL FALL AUCTION



### 6: ERNEST MORENON, NA (American/ French, 1904-2003) SCULPTURE

USD 7,000 - 10,000

THE FUTUREfamily, a man, a woman, a babyGeorgia pink marble; 48"h; 19"w; 12"d This piece was shown at an exhibition at the Worcester (MA) Museum of Fine Arts in 1954, and again at the Boston Museum of Fine Arts exhibit Art in Transition/A Century of the Museum School, March 23 -May 30, 1977, pg. 17, item #20 (catalogue included) Morenon was an instructor of sculpture at the Cambridge School of Design from 1947 to 1952 and at the Boston Museum of Fine Arts School beginning in 1950. In 1955 he became head of the Department of Sculpture at the Museum of Fine Arts, holding this post for ten years.NOTE: Apologies, we cannot approve bidders during the auction.



### 7: ERNEST MORENON, N.A. (American/ French, 1904-2003) SCULPTURE

USD 500 - 700

male and female, prone, back to back, holding hands carved granite, ovoid-form; 8.5"h; 23"w; 8"dNOTE: Apologies, we cannot approve bidders during the auction.



### 8: ERNEST E. MORENON, NA (American/ French, 1904-2003) SCULPTURE

USD 800 - 1,200

GODcarved granite; 30 "h; 20"w 13"d;along with two preliminary drawings for the workNOTE: Apologies, we cannot approve bidders during the auction.



### 9: (2) ERNEST MORENON, N.A. (American/ French, 1904-2003) DRAWINGS

USD 600 - 800

the first of three nude women;the other, portrait of a coupleboth sgn. and dated I.I. E.E. Morenon 194714.5 by 12.5 in. (sight); matted, framed under plexi 20 by 18 in.NOTE: Apologies, we cannot approve bidders during the auction.



### 10: (10) ERNEST MORENON, N.A. (American/ French, 1904-2003) DRAWINGS

USD 400 - 600

PHOTO COMING(2) blue ink figures, sgn. and dated E. E. Morenon 1948, 13 by 10 in. (sight), matted, unframed; another blue ink, abstract woman, 14 by 11 in.; along with abstract black inks drawings: a seated nude woman, 24 by 19 in.; (2) abstracts, 14 by 11 in; (3) abstracts, 17 by 14 in.; another large abstract (edge damage), 24 by 19 in.; all unframed and unsigned NOTE: Apologies, we cannot approve bidders during the auction.



### 11: (on 12) ERNEST MORENON NUDE DRAWINGS

USD 400 - 600

nude women, ten blue ink, two black ink;(3) 14 by 11 in; (5) 18 by 12 in.; (4) 17 by 14 in.unframed and unsignedPHOTOS COMING



### 12: (29 plus) ERNEST MORENON (American/ French, 1904-2003) ACRYLIC

USD 1,000 - 1,500

(12) clear acrylic bracelets each with an engraved and hand-colored Zodiac symbols; inside measurement 2.25" with, in velvet lined wood box (Scorpio missing, two Pices bracelets); along with (13) additional Zodiac bracelets; (4) unformed Zodiac bracelets; (1) Cupid bracelet; and (3) Native American profile portrait bracelets, two dated 1922, 1922/1947, and (2) matching flat 1922 plaques; (3) small flat plaques approx. 2.5 by 3"; a folder of approx. (36) preliminary sketches. Morenon started experimenting with acrylics/plexiglass in 1946. Included are extensive correspondence with Rohm & Hass Co., Philadelphia and Dupont, etc. regarding specs, orders and information on the subject matter. NOTE: Apologies, we cannot approve bidders during the auction.

## CRN ANNUAL FALL AUCTION



### 12A: ERNEST MORENON (American/ French, 1904-2003) ACRYLIC ENGRAVING

USD 200 - 400

Ted Williams at bat engraving into an acrylic plaque; 11"sq. Along with three pen/pencil sketch studies of Ted Williams. Purportedly this was a study for a proposed plaque for the Ted Williams Tunnel, Boston. NOTE: Apologies, we cannot approve bidders during the auction.



### 12B: ERNEST MORENON STUDIES FOR VARIOUS MEDALS PROJECTS

USD 300 - 500

approx. 12, plus a folder of 8 x 12" sketches/proposals; various sizes and mediums



### 13: ERNEST E. MORENON (American/ French, 1904 - 2003) BRONZE

USD 800 - 1,200

LA PIETÀ. Cast bronze study for Morenon's commission of the life-size carved Triani marble sculpture in the Chapel of Our Mother of Sorrows, The National Shrine of the Immaculate Conception, Washington, D.C.; 9"h; 9"w; 4"d; along with paper publications relating to the Cathedral. In addition to the Washington D.C. Pietà commission, Morenon sculpted several stone bas-reliefs for the Cathedral of Mary Our Queen, Baltimore, MD in 1958; (studies for these works are included in this collection.); Stations of the Cross, Blessed Sacrament Holyoke, MA (1956) -gold medal in sculpture given by the American Inst. of Architects; public works include sculptures for the Carney Hospital, Boston (1952), the Nazareth School, Boston (1953). NOTE: Apologies, we cannot approve bidders during the auction.



### 13A: (pair) ERNEST E. MORENON, N.A. (American/ French, 1904 - 2003) BRONZE

USD 800 - 1,200

each, Mary kneeling, holding the body of Christ. Both initialed EME and dated 1964. Cast bronze studies; 5"h; 10"w; 4"d. These were part of a group of various studies for the Pietà for the Cathedral in Washington, D.C. NOTE: Apologies, we cannot approve bidders during the auction.



### 14: (21) ERNEST MORENON, ECCLESIASTIC DRAWINGS

USD 500 - 700

large studies for ecclesiastic Cathedral commissions incl. the Pilot's judgment of Christ, Christ carrying the Cross, etc. various media, sepia, charcoal, pencil on various types of paper, two on tissue (quite fragile); each approx. 27 by 25 in. STONE PANELS CATHEDRAL OF MARY OUR QUEEN, Baltimore "A unique feature of this cathedral is the series of 46 sculptured panels (5' by 7'2") to be found above the side aisles on each face of the beveled arches. Executed by four sculptors in their own distinctive style. All four sculptors are distinguished members of the National Sculpture Society. Three have their studios in Boston, namely, Theodore Barbarossa, Joseph Coletti and Ernest Morenon. Jean de Marco works in New York. All of their panels were carved 'on location' from finished models. In many cases a single scene will involve several panels, and the general viewer will likely enjoy detecting the ingenious techniques devised by the artists to unify these panels." NOTE: Apologies, we cannot approve bidders during the auction.



### 14A: (22) ERNEST MORENON ECCLESIASTIC PRELIMINARY STUDIES

USD 400 - 600

approx. 22 drawings (plus several large photographs of the finished works) incl. drawings for the stone panels at the Cathedral of Mary Our Queen, Baltimore, MD; various sizes and medium on cardboard, paper, etc.; unframed. Along with various publications showing Morenon works. Provenance: This entire collection of works from the estate of Ernest Morenon, per Pierre Morenon, son of Ernest Morenon, Providence, RI.

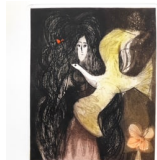
## CRN ANNUAL FALL AUCTION



### 15: ERNEST MORENON EPHEMERA RELATING TO 1937 PARIS EXPOSITION

USD 40 - 50

magazines, etc.



### 16: LILIANA PORTER (Argentina, 1941-2023)

USD 200 - 300

Duguese Un Palome (woman and dove)sgn. l.r. in pencil....Porter, numbered 2/75; also sgn. on reversecolored etching; image 15 by 12 in.; paper 26.56 by 20.5 in., unframedNOTE: Apologies, we cannot approve bidders during the auction.



### 17: JEROME HOWES (American, b. 1955)

USD 2,000 - 3,000

hot air balloon, mermaid on a whale, Nantucket Harborsgn. l.r. Jerome Howes, o/c, 28 by 40 in.; framed 34 by 46 inNOTE: Apologies, we cannot approve bidders during the auction.



### 17A: JEROME HOWES (American, b. 1955)

USD 800 - 1,200

The Rainbow Fleetsgn. l.r. Jerome Howeso/b, 8 by 40 in.; framed 11.5 by 43.5 inNOTE: Apologies, we cannot approve bidders during the auction.



### 18: (on 2) BOTTLED WINE / SAUTERNES

USD 500 - 700

Chateau d'Yquem, Lur-Saluces, 1988 (level above shoulder)Chateau de Fargues, Lur-Saluce, 1975 (level at shoulder)NOTE: Apologies, we cannot approve bidders during the auction.



### 18A: BOTTLE OF BOAL MADEIRA WINE, 1827

USD 500 - 700

green bottle; level above shoulderwax seal, paper label SELO DE GARANTIA /MADEIRA / PORTUGAL / No. 230673Purchased Zachys Wine Auction, New YorkNOTE: Apologies, we cannot approve bidders during the auction.



### 19: RICHARD MERKIN (American/ New York1938-2009)

USD 500 - 800

St. Fiorello, the Dervish of Crotin, 2003sgn. l.l. Merkinpastel/oil stick/paper; 29 by 21.25 in.; floating mount, framed under plexi 36 by 29 in. Merkin taught at the Rhode Island School of Design, Providence for 42 years. In 1962-63 he recieved a Louis Comfort Tiffany Foundation Fellowship. He was a contributing editor for 'Vanity Fair', and his illustrations appeared in 'The New Yorker' and 'Harper's'. He also designed jazz album covers. He wrote a monthly column for Gentlemen's Quarterly called 'Merkin on Style'. His work is represented in the collections of The Smithsonian, The Whitney Museum and the Museum of Modern Art.NOTE: Apologies, we cannot approve bidders during the auction.

## CRN ANNUAL FALL AUCTION



### 20: ROBERT PREUSSER (American/Texas, 1919-1992) POLYURETHANE RELIEF

USD 1,500 - 2,000

polyurethane relief #17sgn., dated, titled on reverse Preusser 1969 polyurethane relief with glass beads, mixed media; 50 by 34 in.; framed 51 by 35 in. Provenance: Estate of Professor Albert and Brenda Szabo, friends of the artist. This piece was on loan to the MIT Museum, Cambridge, MA from 1990-1991 (paperwork included) NOTE: Apologies, we cannot approve bidders during the auction.



### 21: ALBERT SZABO (American/Massachusetts, 1925-2003) SCULPTURAL ASSEMBLAGE

USD 800 - 1,200

HEMINGWAY Remington Noiseless, anti-war Ernest Hemingway quotesgn. on reverse Albert Szaboconstructed from typewriter parts, encased in box with glass front13.5"h; 13.5"w; 5.5"d; exhibition catalogue includedGlass fronted boxes for all five assemblages made by Stephen Szabo.Provenance: Estate of Albert and Brenda Szabo. From his series Mechanism + Meaning relating to typewriters and the communication of ideas.Szabo, Professor Emeritus, retired from Harvard University after teaching there for 42 years at the Graduate School of Design, Department of Architecture, and in the Faculty of Arts and Sciences, Department of Visual and Environmental Studies. NOTE: Apologies, we cannot approve bidders during the auction.



### 22: ALBERT SZABO (American/Massachusetts, 1925-2003) SCULPTURAL ASSEMBLAGE

USD 800 - 1,200

SAINT EXUPERYEarly Remington Portablequote by de Saint Exupery (1900-1944, author of 'The Little Prince')sgn. on reverse Albert Szaboconstructed from typewriter parts, encased in box with glass frontProvenance: Estate of Albert and Brenda Szabo. From his series Mechanism + Meaning "They are a profound meditation on life, time and all that passes away. Their 'vehicle' is a discarded, now obsolete technology...of a modern, urban, easily replicable utility." Ellen Phelan, Artist, Professor, Harvard University Dept. of Visual and Environmental StudiesNOTE: Apologies, we cannot approve bidders during the auction.



### 23: ALBERT SZABO (American/Massachusetts, 1925-2003) SCULPTURAL ASSEMBLAGE

USD 800 - 1,200

SACCO AND VANZETTI13.5"h; 13.5"w; 5.5"d; with wall shelf 13"custom boxes constructed by Stephen SzaboProvenance: Estate of Albert and Brenda Szabo. From his series Mechanism + Meaning NOTE: Apologies, we cannot approve bidders during the auction.



### 24: ALBERT SZABO (American/Massachusetts, 1925-2003) SCULPTURAL ASSEMBLAGE

USD 800 - 1,200

KASIMIR MALEVICH13.5"h; 13.5"w; 5.5"d; with 13" wall shelfin custom glass fronted box by Stephen SzaboProvenance: Estate of Albert and Brenda Szabo. From his series Mechanism + Meaning NOTE: Apologies, we cannot approve bidders during the auction.



### 25: ALBERT SZABO (American/Massachusetts, 1925-2003) SCULPTURAL ASSEMBLAGE

USD 800 - 1,200

EMMETT WILLIAMS13.5"h; 13.5"w; 5.5"d; with wall shelf 13"custom glass fronted box by Stephen SzaboProvenance: Estate of Albert and Brenda Szabo. From his series Mechanism + MeaningNOTE: Apologies, we cannot approve bidders during the auction.



### 26: ALBERT SZABO (American/Massachusetts, 1925-2003) SCULPTURAL ASSEMBLAGE

USD 800 - 1,200

BALUSTERSten painted wood and mounted baluster fragments; 13.5"h; 13.5"w; 5.5"d; with wall shelf 13"Provenance: Estate of Albert and Brenda Szabo. From his series Mechanism + MeaningNOTE: Apologies, we cannot approve bidders during the auction.



## CRN ANNUAL FALL AUCTION



### 27: (on 3) PAUL ROTTERDAM (Austria/America, b. 1939) LITHOGRAPHS

USD 700 - 900

all linear abstracts in black and white, untitled the largest, sgn. and dated in pencil l.r. Rotterdam 75; also l.l. 29/60 inscribed to Brenda & AC Szabo with love/ post dated May 2, 1978 / Paul; 40 by 29 in. the second, sgn. and dated in pencil Paul... Rotterdam 87; also initialed E.A. impression 6.5 by 4.5 in.; floating mount paper measures 14.75 by 11 in.; framed 20 by 17 in.; the third, sgn. Paul Rotterdam 91 24/33; impression 6.75 by 4.75; paper 15 by 11 in.; framed 16 by 12 in.; etchings printed by/on Kupferdruck Rolf Meier watermarked paper; all framed under plexi Provenance: Estate of Professor Albert and Brenda Szabo, friends of the artist. Rotterdam was a lecturer of Visual Studies at Harvard's Carpenter Center for Visual Arts. He was awarded the Austrian Medal of Honor in Sciences and Arts. NOTE: Apologies, we cannot approve bidders during the auction.



### 28: JOHN STEUART CURRY (American/Kansas, 1897-1946)

USD 700 - 900

Performing Tigers sgn. l.r. in pencil in margin John Steuart Curry; and left margin title and 25...? also sgn. within print l.r. woodblock print; image 10.5 by 14 in.; matted, framed under plexi 17 by 20 in. along with book 'John Steuart Curry's Pageant of America' by Laurence Schmeckebier inscribed by his wife Kathleen Curry 1956; 1970 newspaper article; two exhibition catalogues Univ. of Kansas and Syracuse NY Museums; and a Christmas card. Provenance: Estate of Professor Albert and Brenda Szabo Curry, Grant Wood and Thomas Hart Benton, were the three major artists of American Regionalism of the 1920's, 30's and 40's. All three artists were raised in the Midwest, their works depicting realist views of the local rural life. NOTE: Apologies, we cannot approve bidders during the auction.



### 28A: AMERICAN, c. 1930 PENCIL DRAWING

USD 300 - 500

field workers harvesting potatoes unsigned; pencil/paper; carved frame, under glass NOTE: Apologies, we cannot approve bidders during the auction.



### 29: (on 4) CONSTANTINO NIVOLA (Italian/American, 1911-1988)

USD 700 - 900

Handspen on paper; 13.5 by 16.75 in. (sight); floating mount; matted, framed under plexi 17 by 20 in.; along with a pair of plaster hand sculptures, approx. 3 by 3 in.; mounted on a rhombus-shaped plinth 4 by 7 by 4.5 in.; also, a note from the artist to his friend "Dear Albert (Szabo) I hope you like this playful base for the hands/ I wish you health and a merry Christmas / tino"; included is a Nivola Museum (Sardinia, Italy) Catalogue, 2004 Provenance: Estate of Professor Albert and Brenda Szabo, friends of the artist. Born in Orani, Italy, Nivola was a respected sculptor, painter, and educator. Fleeing fascist Italy, he moved to the United States in 1939 with his wife Ruth Guggenheim. He participated in the anti-fascist Giustizia e Libertà movement and was appointed director of the Design Workshop at Harvard University in 1954. NOTE: Apologies, we cannot approve bidders during the auction.



### 30: MIL LUBROTH (American/Madrid, 1926-2004)

USD 400 - 600

Jazz sgn. l.r. in margin Mil Lubroth 12/50 image 17.5 by 16 in; matted, framed under plexi; along with small Lubroth poster Provenance: Estate of Albert and Brenda Szabo, friends of the artist American born, Mil was a Fullbright Scholar who worked in Madrid. NOTE: Apologies, we cannot approve bidders during the auction.



### 31: (2) TOSHIHIRO KATAYAMA (Japan/America, 1928-2013)

USD 600 - 800

abstracts lithographs on paper one mixed media sgn. in pencil Toshi in left margin; image 13 by 6.75 in.; matted, framed under plexi 19.5 by 13.5 in.; the other: sgn. and dated in pencil in right margin Toshi '87; in pencil in margin for: my dear old friend Albert / November 7th, '94; floating mount, paper measures 44 by 30 in.; framed under plexi 45.5 by 31.5 in. Provenance: Estate of Professor Albert and Brenda Szabo, friends of the artist In 1966 Katayama was appointed professor Emeritus at the Harvard University Carpenter Center for Visual Arts. He also served as director of the Harvard's Carpenter Center from 1990-1995. NOTE: Apologies, we cannot approve bidders during the auction.

## CRN ANNUAL FALL AUCTION



### 32: WOLF KAHN (America/Germany, 1927-2020) COLORED LITHO

USD 1,000 - 2,000

Down in the Valley sign. l.r. in pencil W Kahn 06; num. l.l. 97/108 lithograph on woven paper; image 28 by 34 in.; paper 35 by 40 in.; framed, floating mount under plexi 43 by 47.5 in. NOTE: Apologies, we cannot approve bidders during the auction.



### 33: JAMES RIZZI (American, 1950-2011)

USD 2,500 - 3,500

A VILLAGE FOR THE WORLD sign. l.l. James Rizzi; dated l.r. 1996; also A/P II/L (2/50) 3D color serigraph artist proof, 32 by 24.25 in.; framed and matted under plexiglass 39 by 31.5 in. NOTE: Apologies, we cannot approve bidders during the auction.



### 34: (on 2) GENE MOORE/ TIFFANY STERLING ELEPHANT CIRCUS SET

USD 1,500 - 2,000

both figure and elephant marked Sterling / Tiffany & Co. large sterling and enamel circus elephant with a detachable performer in yellow costume aloft; elephant is 4"h, 5.5 "long; total incl. the performer 8" tall; 28.6 troy oz. Made for Tiffany & Co. by Gene Moore (1910-1998). Moore was the Artistic Director and Vice President of Marked "Tiffany & Co." NOTE: Apologies, we cannot approve bidders during the auction.



### 34A: (on 2) GENE MOORE/ TIFFANY STERLING ELEPHANT CIRCUS SET

USD 1,500 - 2,000

elephant marked Sterling / Tiffany & Co. large sterling silver and enamel elephant with performer in red costume aloft holding a parasol; elephant is 4"h, 5.5 "long; total incl. the performer 8.5" tall; 29 troy oz. NOTE: Apologies, we cannot approve bidders during the auction.



### 34B: GENE MOORE FOR TIFFANY, STERLING BABY CIRCUS ELEPHANT

USD 600 - 800

marked under belly Tiffany & Company / Sterling / Made in Italy elephant measures 4.5" l, 2.25" tall; 9.7 troy oz. NOTE: Apologies, we cannot approve bidders during the auction.



### 34C: (on 3) GENE MOORE FOR TIFFANY, STERLING CIRCUS CLOWN FIGURES

USD 1,000 - 1,500

both marked Sterling / Tiffany & Co. (2) juggling clowns in red costumes, marked ; 4.25" tall; along with another clown in green and yellow costume, hand in pockets, 3.5" tall; total 13.1 troy oz. NOTE: Apologies, we cannot approve bidders during the auction.



### 34D: (on 2) GENE MOORE FOR TIFFANY, STERLING CLOWN FIGURES

USD 1,000 - 1,500

sterling and enamel, a clown riding a pig, marked Sterling / Tiffany & Co.; 3.75" tall, 3" long; along with a clown wearing an orange jacket riding a unicycle marked Sterling / Tiffany & Co. Made in Italy, 4"h; 3" long; 14.9 total troy oz. NOTE: Apologies, we cannot approve bidders during the auction.



## CRN ANNUAL FALL AUCTION



### 34E: (2) GENE MOORE FOR TIFFANY, STERLING CIRCUS CLOWN FIGURES

USD 800 - 1,200

(2) jugglers in red costumes Sterling / Tiffany & Co., 4.25" tall; 9.7 troy oz. NOTE: Apologies, we cannot approve bidders during the auction.



### 35: ROBERT RAUSCHENBERG (American, 1925-2008) PRINT

USD 1,000 - 1,500

abstract collage with book open to Botticelli's Spring, signed, numbered and dated l.r. margin Rauschenberg 247/250 73, signed within image Rauschenberg 73, screen print on woven paper with impressed Syria Studio watermark, Creiger Sesen Associates, Boston label on reverse, image 30 by 22 in.; sheet 35 by 24 in.; floating mount, under plexiglass, metal frame 37 by 26.5 in. NOTE: Apologies, we cannot approve bidders during the auction.



### 36: NATIVE AMERICAN POTTERY VASE, MARGARET TAFOYA

USD 4,000 - 6,000

incised on bottom Margaret Tafoya Santa Clara Pueblo, blackware pottery vase, the shoulder encircled with a band of various incised geometric designs; 18.5" h; 13" w Margaret Tafoya (b. 1904) NOTE: Apologies, we cannot approve bidders during the auction.



### 36A: NATIVE AMERICAN POTTERY JAR, WHITEGESE

USD 400 - 600

incised on bottom Daryl Whitegeese Santa Clara, Pueblo blackware pottery jar, 9" h Daryl Whitegeese (b. 1964) son of LuAnn Tafoya and the grandson of Margaret Tafoya. NOTE: Apologies, we cannot approve bidders during the auction.



### 37: LEROY NEIMAN (New York, Illinois, Minnesota, 1921 - 2012)

USD 2,000 - 3,000

the President's Birthday Party Marilyn Monroe singing Happy Birthday to JFK, signed, l.r. Leroy Neiman, numbered l.l. 299/600 also l.l. The President's Birthday Party/1962/Madison Square Garden, limited edition serigraph; image 35.5 by 32 in.; matted, framed, under glass 46.5 by 43 in. along with the Certificate of Authenticity dated July 1989, numbered 299 From the collection of a Rhode Island gentleman, purchased in 1989. NOTE: Apologies, we cannot approve bidders during the auction.



### 38: LEROY NEIMAN (New York, Illinois, Minnesota, 1921-2012)

USD 1,500 - 2,500

Bethesda Fountain, Central Park, signed, l.r. Leroy Neiman, number l.l. 441/500, limited edition silkscreen print image 30.5 by 38 in.; framed 42.75 by 49.5 in. along with the Certificate of Authenticity dated 1988, #441 NOTE: Apologies, we cannot approve bidders during the auction.



### 39: (3) ROY LICHTENSTEIN CERAMIC PLATES

USD 1,000 - 1,500

Roy Lichtenstein (American, 1923- 1997) Water Lilies, 1990, signed, underglaze Roy Lichtenstein; the reverse with printed signature and numbered 1455, 2854 and 2193 / 3000...studio-line/Germany/Limitierte Kunstreihe 12" diam. (30.8 cm); all with original fitted clamshell boxes and sales pamphlet. NOTE: Apologies, we cannot approve bidders during the auction.

## CRN ANNUAL FALL AUCTION



### 40: LOUIS FERON (French/American, 1901-1998) SCULPTURE

USD 2,500 - 3,500

initialed on the seahorse's tail LF; oval, shaped agate bowl supported at one end by a silver mermaid with gold embellishments and at the other end a seahorse with gold harness; sculpture measures 5.25"h; 11"w11"w; 5.5"d; mounted on wood plinth 2"h, 6"w, 5"d From the estate auction of Leslie Snow Feron, Louis Feron's widow, 2/17/2018. Works of Louis Feron are on exhibit at the MFA Boston. Feron was born in Rouen, Normandy. In 1933 Feron won the Best Chaser, Gold and Silversmith of France for his work Head of Joan, now at the Boston Museum of Fine Arts. He became an American citizen in 1951. In 1962 his wife and he established their workshop in Eaton, New Hampshire where they both lived until their deaths. A bas-relief by Louis Feron carved on Honduras mahogany, 'Madonna and the Infant Jesus' is pictured in a 1962 National Sculpture Review magazine along with works by Morenon. NOTE: Apologies, we cannot approve bidders during the auction.



### 41: MID-CENTURY MODERN CHILD'S BURL ROOT CHAIR

USD 1,000 - 1,500

free form; 23"h; 20"w; 23"d NOTE: Apologies, we cannot approve bidders during the auction.



### 42: BERENICE ABBOTT (American, 1898 -1991) PHOTOGRAPH

USD 1,500 - 2,000

Queensboro Bridge Southwest from 41st pier, Long Island City, Queens New York sgn., l.r. in pencil BERENICE ABBOTT stamped verso PHOTOGRAPH/BERENICE ABBOTT/ABBOT, MAINE 04406 gelatin silver print; image size 10.5 by 13.5 in.; framed, matted under glass 20 by 16 in. Sotheby's; Christies' and Carspecken Scott Gallery, Delaware stickers verso NOTE: Apologies, we cannot approve bidders during the auction.



### 43: ANDRE KERTESZ (American/ Hungarian, 1894 - 1985) PHOTOGRAPH

USD 2,000 - 3,000

Satiric Dancer (Magda Forstner), 1926 sgn. in pencil verso Paris/ 1926 / A. Kertesz gelatin silver print; 13.5 by 10.75 in; image 20 by 16.5 in; framed under glass Christie's New York sticker on reverse of mat. Kertesz recalled while photographing this Hungarian cabaret dancer, her arms all akimbo, that "I saw that it was perfect...she threw herself on the couch and I took it at once." Kertesz's father was a book seller, his mother owned a cafe in Budapest, Hungary, where he was born. In 1914 he was drafted into the Austro-Hungarian Army and was wounded in action in 1915. He won a Hungarian magazine's photo contest in 1916 with a photo of himself picking lice off his WWI uniform. He continued to document the world with an eye for, as he put it, "the little things". Moving to Paris in 1925, he became friends with artist Marc Chagall and Henri Cartier-Bresson (the younger). In 1936, pursuing a job as a commercial photographer in New York City, Kertesz and his wife became stranded there during WWII. For fifteen years he photographed the homes of the wealthy for House and Garden. He once said it made him consider suicide. In 1964, at the age of 70, he was given a solo exhibition at the Museum of Modern Art which revived his enthusiasm for artful photography, as well as the popularity he had experienced in Paris. He died in New York City at the age of 91. The 2005 exhibit at the National Gallery of Art, Washington D.C. was the first major Kertesz retrospective in 20 years. NOTE: Apologies, we cannot approve bidders during the auction.



### 44: MID-CENTURY STAINLESS STEEL ARMCHAIR, DAVIS ALLEN

USD 4,000 - 5,000

1958, from the Inland Steel Co. Building, Chicago Gratz Industries stainless steel and original Jack Lenor Larsen's orange upholstery 31"h; 26.5"w; 27"d From a New York City private collection. Purchased in 90's at NYC Armory show. Inland Steel was the first corporate interior designed by Skidmore, Owings and Merrill and Davis Allen. See Davis Allen: 'Forty Years of Interior Design at Skidmore, Owings & Merrill', Slavin, pgs. 26-31 NOTE: Apologies, we cannot approve bidders during the auction.



### 45: BEN SHAHN FRAMED POSTER

USD 300 - 400

Ben Shahn (American, 1898-1969) BEN SHAHN GRAPHICS Philadelphia Museum of Fine Art / November 15th December 31st 1967 Copyright 1967 poster originals, limited no. 65 offset color lithograph; framed, under plexi 46.5 by 31.5 in. From a New York City private collection. NOTE: Apologies, we cannot approve bidders during the auction.

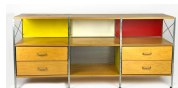
## CRN ANNUAL FALL AUCTION



### 46: PROUVE/LELEU MID-CEN. MODERN INSTITUTIONAL OCCASIONAL TABLE

USD 1,000 - 1,500

Jules Leleu, c. 1934-1936 produced by Ateliers Jean Prouve in Nancy, France for the sanatorium Martel de Janville in Plateau Assy, France lacquered metal frame, inset oak top and lower shelf, 24.5"h; 19.5"w; 15.5"d; top 13"sq. From a New York City private collection. Purchased in 90's at NYC Armory show. See: Francoise Sirex, The House of Leleu: Classic French Style for the Modern World 1920-1973, NY, pg. 178 NOTE: Apologies, we cannot approve bidders during the auction.



### 47: HERMAN MILLER/EAMES-STYLE MODERN STORAGE UNIT

USD 500 - 700

Case Study custom made by Modernica primary color panels; four drawers; 16"h; 32.5"w; 72"d From a New York City private collection. Purchased at Modernica, NYC in the 1980's NOTE: Apologies, we cannot approve bidders during the auction.



### 48: EAMES MID-CENTURY MODERN STORAGE UNIT

USD 700 - 900

model 220-N; pair white sliding doors, interior shelf; 33"h; 47"w; 17"d From a New York City private collection. NOTE: Apologies, we cannot approve bidders during the auction.



### 49: WILHELM MOZER DELIKATESSEN FRAMED POSTER

USD 200 - 300

MUNCHEN-NORD... 1936 artwork by Ludwig Hohlwein done in 1909 for Mozer's restaurant in Munich still life with lobster, champagne and liqueur bottles 36 by 49 in.; framed 38 by 50 in. NOTE: Apologies, we cannot approve bidders during the auction.



### 50: 20TH C. FRANK GEHRY

USD 500 - 700

1990, sgn. KNOLL / Gehry Made in USA 10/00 round, clear glass top (removable); laminated maple pedestal base; 29"h; top 40" diam.; NOTE: Apologies, we cannot approve bidders during the auction.



### 51: RALPH EUGENE CAHOON, JR (Massachusetts, 1910-1982)

USD 8,000 - 10,000

mermaid on the shore, resting against a boat original paper label verso with artist name and title (illegible) o/m; 18 by 23.5 in.; framed 21 by 27 in. NOTE: Apologies, we cannot approve bidders during the auction.



### 52: AKIRA ARITA (Japanese/American, b. 1947)

USD 400 - 600

still life with teapot and potted plant 22 by 26 in; painted frame 29.5 by 33.5 in. with 1983 gallery exhibition booklet Akira attended the Rhode Island School of Design and later was a drawing instructor there. NOTE: Apologies, we cannot approve bidders during the auction.

## CRN ANNUAL FALL AUCTION



**53: ANNE PACKARD (American/Massachusetts/New Jersey, b. 1933)**

USD 1,500 - 2,500

beach with red and white dorysgn. l.l. A. Packard; o/b; 8 by 10 in.; framed 9 by 11 in.Loring Gallery label, Greenwich, CTNOTE: Apologies, we cannot approve bidders during the auction.



**54: MICHEL DELACROIX (French, b. 1933)**

USD 2,000 - 3,000

Rue Petitpontsgn. l.r. Michel Delacroix; also titled and sgn. verso Rue Petitpont/Michel Delacroix/Paris Lo/c; 13 by 16 in.; framed 19.25 by 19.25 in.NOTE: Apologies, we cannot approve bidders during the auction.



**55: PAIR OF BERTOIA CHROME WIRE DIAMOND CHAIRS, KNOLL**

USD 700 - 900

designed by Harry Bertoia (1915-1978) for Knoll in 1952late 20th c., rail marked KNOLL; original, removable, orange leather seat cushions; 30.5"h; 33"w; 30"dCushion with two labels; "...distributed by Knoll, Inc....East Greenville, PA"From a New York City private collection.NOTE: Apologies, we cannot approve bidders during the auction.



**56: PAIR KARL SPRINGER MID-CEN. MODERN 'ONASSIS' COUNTER STOOLS**

USD 1,500 - 2,000

custom made for the consignor; one with plaque on stretcher: Karl Springer 1988wood frame covered in coral goat skin; brass foot rest on front stretcher; back 38"h; seat 26"h; 24"wThis design was originally commissioned by Jackie Onassis. Karl Springer (1931-1991), born in Berlin, Germany, was an American furniture designer, active from the 1960's through the 1990's. He immigrated to the United States in 1957 to become the top window dresser at Lord and Taylor on 5th Ave. in NYC. On the side, he created leather accessories when placed in Bergdorf Goodman's became an immediate sensation. After opening his own small shop in NYC, it is said that the Duchess of Windsor discovered him and was his greatest patron. This paved the way for his career in furniture production in partnership with furniture designer Mark Eckman. After his death, in 1994, he was honored with a solo exhibition at the New York School of Design. Production at his New York based company ceased in 1992. NOTE: Apologies, we cannot approve bidders during the auction.



**57: MARJORIE FITZGIBBON (Ireland, 1930-2018) BRONZE**

USD 1,000 - 1,500

farewell, family affected by Irish potato famine, stamped on rim of base M Fitzgibbon DAF 90cast bronze; 12"h; base 11.75" diam. NOTE: Apologies, we cannot approve bidders during the auction.



**58: EDITH JACKSON GREEN (American, 1876-1938)**

USD 200 - 300

the tulips are droppingsgn. l.r. Edith Jackson Greeno/c; 24 by 20 in; framed 26 by 22 in.old Providence Art Club paper label on stretcherFrom a Providence, RI home. Given to the consignor as a gift from the artist's son, the nephew of Rhode Island Senator T.F. Green.NOTE: Apologies, we cannot approve bidders during the auction.



**59: PALMER HAYDEN (American, 1890-1973)**

USD 3,000 - 5,000

Stroll in the Parkfour figures in a landscape by a pondsgn. l.l. Palmer Hayden; also verso sgn. and titled u.r.o/artist board; 12 in by 10 in; framed 13.5 in by 11.5 in Hayden is associated with the Harlem Renaissance movement. Born in Virginia, he was initially self taught. Around 1920 Hayden went to New York City and studied with Victor Perard at Cooper Union, and then later in Boothbay Harbor, Maine at the Commonwealth Art Colony. From 1927-1932 he studied and painted in Paris, focusing more on genre scenes, less on seascapes. Returning to New York City, his focus was African-American subject matter. He died in New York City.NOTE: Apologies, we cannot approve bidders during the auction.

## CRN ANNUAL FALL AUCTION



**60: ALFRED MCNAMARA (American, 1911-1994)**

USD 400 - 600

TWO WOMEN AT TABLEsgn. l.r. A McNamara also verso: #49/9-76/TWO WOMEN AT TABLE/ A McNamarao/b; 24 by 30 in., framed, 29.5 by 35 in.NOTE: Apologies, we cannot approve bidders during the auction.



**61: KARTELL MOBIL DRAWER ON WHEELS**

USD 500 - 700

attrib. designer Antonio Citterio, 1980'sfour red plastic drawers on metal frame; on removable wheels; 31'h; 19.5"w; 18.5"dNOTE: Apologies, we cannot approve bidders during the auction.



**62: BROTHER THOMAS BEZANSON CERAMIC VASE**

USD 2,000 - 3,000

Brother Bezanson (American, 1929-2007)Chrysanthemumsigns Benedictine Monks, Weston, VT 4/2, also ichthys symbol; round ceramic vessel glaze round form with small rimless opening; 8"h; 9" at widest Brother Bezanson left the Benedictine Priory in Weston Vermont in 1983. He produced ceramics there from 1959 until the early 1980's when he moved to Erie, PA becoming artist in residence at Mount Saint Benedict. His work appears in over 80 museum collections.NOTE: Apologies, we cannot approve bidders during the auction.



**63: VINTAGE LOUIS VUITTON TRAVEL CASE**

USD 1,000 - 1,500

monogram V.R.R.; brass lock and corners; with key 118927leather handle on lid incised L. VUITTON; 8"h; 16"w; 9"dVuitton label to interior, numbered 874408NOTE: Apologies, we cannot approve bidders during the auction.



**64: (on 2) LOUIS VUITTON VINTAGE TRAVEL BAGS**

USD 400 - 600

A SUITCASE, leather name tag and bottom leather corners, both stamped Louis Vuitton Paris /Made in France, 18"by 27"w; 9.5"d (shows use, leather corners lower worn; brass feet missing); along with an ALIZE KEEPALL V.I.0931, 3-sections, three locks, with marked shoulder strap; stamped on leather Louis Vuitton Paris, Made in France, 15" by 24"w (stain on leather near handle); NOTE: Apologies, we cannot approve bidders during the auction.



**65: MID-CENTURY MODERN CUSTOM COFFEE TABLE, PALEY**

USD 2,000 - 3,000

sgn. and dated on leg Albert Paley 1999 also on leg EX-70.14shaped wood top; three scrolling iron legs with scrolling feet, two with entwined vine; 17"h; top 44"w; 25.5"dThis table was custom made by Paley for the consignor. Albert Paley is an American Modernist metal artist. Starting his career as a jewelry artist in the 1970's, Paley has successfully expanded his creative reach towards metal sculpture, with some of his works appearing in the permanent collections of the Metropolitan Museum of Art in New York and the Museum of Fine Arts Boston.NOTE: Apologies, we cannot approve bidders during the auction.



**66: WARREN WHEELLOCK (American, 1880-1960)**

USD 1,000 - 1,500

Salute to the 22nd DAR (NYAF 75) sgn. l.l. Wheelocktitled on stretcher; old Christie's sticker; o/c, 32 by 22 in.; framed 34 by 24 in. Wheelock was also a self-taught sculptor and illustrator. Born in Sutton, MA he spent most of his childhood in Webster. He was a descendant of the founder of Dartmouth College and Ralph Waldo Emerson. He died in New Mexico. His works have been exhibited in the NY Metropolitan Museum of Art and the Modern Museum of Art. He is in the permanent collection of the Whitney, Brooklyn Museum, Philadelphia Museum and the Art Institute of Chicago. His 1947 bronze 18' statue of Revolutionary War hero General Von Steuben stands at the entrance of the Philadelphia Museum of Art. His lifesize bronze of Babe Ruth "Sulton of Swat" was acquired by the New York Yankees and installed at its headquarters. He also did bronzes of Lincoln, Washington, and Walt Whitman.NOTE: Apologies, we cannot approve bidders during the auction.



## CRN ANNUAL FALL AUCTION



### 67: DANISH MODERN ENAMELED METAL FREE-STANDNG FIRE PLACE

USD 400 - 600

orb-form, white enamel; sliding metal mesh screen; wood burning with exhaust pipe; 39"h; approx. 31"diameterNOTE: Apologies, we cannot approve bidders during the auction.



### 68: SET OF (12) HEREND DINNER PLATES, ROTHSCHILD BIRD PATTERN

USD 1,500 - 2,500

blue mark HEREND HUNGARY / HAND PAINTED/ 1527/RO; also each plate has a numbered -(6)112-A; (5) 64-A; (1) 28-Aeach plate has a different pair of birds perched on a branch; basket weave edge; 11"diam. NOTE: Apologies, we cannot approve bidders during the auction.



### 69: HEREND COVERED SOUP TUREEN WITH UNDERTRAY,

USD 800 - 1,200

blue mark HEREND HUNGARY / HAND PAINTED / 102/Rom / 6lemon finial, white basket weave edge to tureen and undertray; tureen 9"h; 13"w; tray 14.5 by 11"NOTE: Apologies, we cannot approve bidders during the auction.



### 69A: (on 10) VARIOU HEREND TABLEWARE, ROTHSCHILD

USD 800 - 1,200

blue mark HEREND HUNGARY / HAND PAINTED(2) round footed master salts; oval serving dish, 9"; handled candy dish, 7"; a shell-form butter plate, 4.5"; shaped leaf dish, 4"; along with Herend green CHINESE BOUQUET pattern: covered sugar, 4.5"diam.; handled cake plate, 11"; and a leaf-form plate, 6"; and a rust colored, shaped mini tray, 5.5" NOTE: Apologies, we cannot approve bidders during the auction.



### 70: 18TH C. AMERICAN/BOSTON SILVER TANKARD, JAC

USD 3,000 - 5,000

c. 1748; Jacob Hurd (Boston, 1703-1758)marked HURD under the rim near handle, and again at bottom;hinged lid with acorn finial; the body encircled with two tiers of engraved scrolling leaf decoration; step-molded base; inscription C.H.R. from W.R. to front; 8.5"h; 7"w; 5" diam.; 24.9 troy oz.From a Massachusetts South Shore collector; Milton Babcock provenance.NOTE: Apologies, we cannot approve bidders during the auction.



### 71: 18TH C. AMERICAN/BOSTON SILVER PORRINGER, JACOB HURD

USD 1,000 - 1,500

Jacob Hurd (Boston, 1703-1758)marked HURD on pierced handle; rimmed bowl; 2.25"h; 5.25"w; 8"d; 66 troy oz.From a Massachusetts South Shore collector; Milton Babcock provenanceNOTE: Apologies, we cannot approve bidders during the auction.



### 72: 18TH C. BOSTON SILVER TABLE SPOON, REVERE

USD 3,000 - 5,000

Paul Revere (Boston, 1735-1818)marked REVERE on back of neck; the handle with punched decoration and the initials AD ; 9.5"h; 2"w; 1.7 troy oz.From a Massachusetts South Shore collector; Milton Babcock provenanceNOTE: Apologies, we cannot approve bidders during the auction.

## CRN ANNUAL FALL AUCTION



### 73: 18TH C. BOSTON SILVER TABLE SPOON, REVERE

USD 2,500 - 3,500

Paul Revere, Jr. (Boston, 1735-1818) marked REVERE on back of neck; monogrammed EP on handle; 8.5"h; 1.75"w; 1.3 troy oz. From a Massachusetts South Shore collector; Milton Babcock provenance Paul Revere Jr. (1734-1818) apprenticed as a silversmith with his father, a French Huguenot silversmith Apollos Rivoire, known in America as Paul Revere, Sr. (1702-1754). Paul Revere Jr. inherited his father's shop in 1754 and continued to run a successful business selling silver, jewelry, tools, hardware, and imported textiles. NOTE: Apologies, we cannot approve bidders during the auction.



### 74: PAIR OF 18TH C. BOSTON COIN SILVER SERVING SPOONS, TYLER

USD 600 - 800

silversmith David Tyler (Boston, c. 1760-1804) marked DT within a rectangle; both engraved HM to LM bordered by decorative embossed floral pattern; 9" long; 3.4 total troy oz. From a Massachusetts South Shore collector; Milton Babcock provenance NOTE: Apologies, we cannot approve bidders during the auction.



### 75: AMERICAN STONEWARE BUTTER CHURN CROCK, NORTON

USD 500 - 700

incised F.B. NORTON & CO. / WORCESTER MASS / 4 bold cobalt blue bird perched on leafy branch decoration; 4 gallon; 16"h; opening 6.5" diam. NOTE: Apologies, we cannot approve bidders during the auction.



### 76: AMERICAN FOLK ART, c. 1840

USD 30,000 - 50,000

portrait of Charles Franklin Carter, b. 1840 standing, holding a reticulated basket of berries and a riding crop landscape background with lake, house and bird on branch riding crop initialed CFC (Charles Franklin Carter) b. 1840, Worcester/c; 27 by 22 in.; original gold frame 29.5 by 24 Descended through the Carter family of Massachusetts; Roland Carter Martin inherited in 1886, to Jennie Weston Carter, to present owner NOTE: Apologies, we cannot approve bidders during the auction.



### 77: DIMINUTIVE BOSTON/SEYMOUR CHEST OF DRAWERS

USD 6,000 - 8,000

John/Thomas Seymour 1800-1810, all original, untouched; four drawers with original embossed brass knobs; shaped apron; 33.5"h; case 34"w; 17.5"; top 35.5"w, 18"d Prov: Ben Perley Poore (Newburyport, MA, 1820-1887); 1938 home and collection given to SPNEA; 1948 SPNEA returns collection to Poore's great-grandson Edward Moseley (1921-2006) Newbury, Massachusetts; 2007 to Estate of E. Moseley, Northeast Auctions; to the present Old jelly label on backboard: Edward S. Mosel? from / ?...Hill/ 1938 Indian Hill Farm in Newbury was the Poore family home, later the home of Moseley, Poore was a major 19th c. collector and pioneer of preservation of American antiquities incl. items from Mt. Vernon and the White House. Indian Hill was destroyed by fire in 1959. This chest was authenticated by Robert Mussey, The Masterworks of John and Thomas Seymour. The angle cut of drawer slides at the back of the drawer bottoms is a signature of the Seymour workshop. NOTE: Apologies, we cannot approve bidders during the auction.



### 78: RARE SEYMOUR/BOSTON PEMBROKE TABLE

USD 5,000 - 7,000

c. 1785-93; birdseye maple veneer on mahogany; with mahogany cross banded top; ends with working and faux drawer with ebony line and dot inlay, orig. original brass knobs (similar to knobs on chest); oval drop leaves with ebony and satinwood line and band inlay; figured maple tapering legs with ebony line and cuff inlay 29"h; 20"w; 31"d; oval drop leaf 10"; top when open top 38" See Robert Mussey The Furniture Masterworks of John & Thomas Seymour, pg. 21, fig. 2.4 Purchased in 1975 from Jack Partridge, North Edgecomb, ME Construction is an English form having by a cabinet maker with an English education of craftsmanship (cedar liner a tip off- English regency style) take angle cut corner of drawer bottom-relate pulls NOTE: Apologies, we cannot approve bidders during the auction.

## CRN ANNUAL FALL AUCTION



### 79: BOSTON/SEYMOUR SATINWOOD AND MAHOGANY CARD TABLE

USD 3,000 - 5,000

shaped, demilune top with dart pattern inlaid edges; apron with birdseye oval and panels; birdseye maple paneled tapering legs, 29.5"h; 36"w; 17.5"dNOTE: Apologies, we cannot approve bidders during the auction.



### 80: ANTONIO NICOLO JACOBSEN (American, 1850-1921)

USD 6,000 - 8,000

Horatio Hall oceanliner with American flagEast River, Brooklyn Bridge in background at stern, bow Portland Steamship buildingssgn. and dated I.I. A. Jacobsen 1899 / West Hoboken NJo/c; 22 by 36 in; black frame 26 by 40 in.NOTE: Apologies, we cannot approve bidders during the auction.



### 81: EXCEPTIONAL MASSACHUSETTS BIRDCAGE BREAKFAST TABLE

USD 2,000 - 3,000

North Shore, old patina; heavy San Domingo mahogany; two-board top; fluted post, finely executed shell-carved knees; ball and claw feet; 29"h; tilt top 34"diam.NOTE: Apologies, we cannot approve bidders during the auction.



### 82: RARE NEWPORT CHIPPENDALE SAN DOMINGO MAHOGANY TEA TABLE

USD 4,000 - 6,000

c. 1750-70, attrib. John Townsend, Newport, Rhode Islandmolded edge, overhanging top; shaped apron; stop fluted legs;27"h; top 32.5"w, 23"d; base 23"w, 18"d Prov.: A New York couple, purchased from Israel Sack.See this table, American Antiques from Israel Sack Collection, Highland House Publ., pg. 24, No. 48NOTE: Apologies, we cannot approve bidders during the auction.



### 83: NEW ENGLAND PAINTED DOME-TOP DOCUMENT BOX

USD 3,000 - 5,000

Western Massachusetts or New Yorkall original untouched surface; mustard paint with red and green embellishments; three green line oval to top center with sunflowers to each corner; original pin hinges and iron lock; 14"h; 32"w; 17"dNOTE: Apologies, we cannot approve bidders during the auction.



### 84: CONNECTICUT QUEEN ANNE CHERRY CANDLESTAND

USD 800 - 1,200

original red surface, dish-top; slender urn post; snake feet; 27"h; 17"diam.NOTE: Apologies, we cannot approve bidders during the auction.



### 85: DIMINUTIVE NEW ENGLAND PAINTED BLANKET CHEST

USD 1,500 - 2,000

Tarble Family, original red paint, the front with free-hand floral stylized decoration with the initial JT at center; hinged top with ditty box to interior; 19.5"h; 31.5"w; 15"d "Was made by my great, great grandfather Joseph Tarble. Mr. Tarble was born in 1805 and his wife, Nancy (Smith) Tarble, were married Dec 4, 1828..."NOTE: Apologies, we cannot approve bidders during the auction.

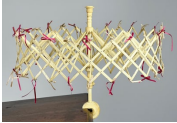
## CRN ANNUAL FALL AUCTION



### 86: 18TH C. BOSTON QUEEN ANNE WALNUT DRESSING TABLE

USD 3,000 - 4,000

in old color, long drawer over three, original brass; cabriole legs ending in pad feet; 31"h; 34"w; 21.5"d; 30" case Old note attached in drawer: Belonged to Miss Caroline Beale / Quincy NOTE: Apologies, we cannot approve bidders during the auction.



### 87: 19TH C. WHALEBONE SWIFT

USD 1,000 - 1,500

pink ribbons, original table clamp; 16.5"h; 7" slats NOTE: Apologies, we cannot approve bidders during the auction.



### 88: 19TH C. WHALEBONE WATCH HUTCH

USD 800 - 1,200

tower-form, applied turned and pierced decoration; black wood base with ball feet; 8.75"h; 4.75"w; 2.75"d NOTE: Apologies, we cannot approve bidders during the auction.



### 89: (on 2) NAPOLEONIC PRISONER OF WAR BONE NEEDLE CASES

USD 400 - 600

18/19th c., one wrapped with brown thread (old needle inside); 4.25"; .75"diam; the other with incised green leaf bands, 4.25"; 1"diam. NOTE: Apologies, we cannot approve bidders during the auction.



### 90: 19TH C. SAILOR'S MOTHER-OF-PEARL INLAID VALUABLES BOX

USD 700 - 900

overall mother-of-pearl inlay; hinged lid, ditty box to interior with inlay to lid; all sides with inlaid raised panels; flat molded base; 9"h; 15.5"w; 9.5"d NOTE: Apologies, we cannot approve bidders during the auction.



### 91: NAPOLEONIC PRISONER OF WAR BONE GAME CASKET

USD 700 - 900

late 18th/early 19th c.; the sliding lid with two watercolor panels, a lady and a gentleman; incised leaf decoration at edges; (35) domino gaming pieces; 1.5"h; 7.5"w; 2.25"d NOTE: Apologies, we cannot approve bidders during the auction.



### 92: NAPOLEONIC PRISONER OF WAR BONE GAME CASKET

USD 800 - 1,000

late 18th/early 19th c.; bowed sliding lid with two panels of color engravings, a gentleman courting a lady, and a lady at the window waving good-by, border of holes; all sides with colored landscape engravings; fitted with (56) domino game pieces, (5) dice, (3) pins; 3"h; 9.5"w; 4"d NOTE: Apologies, we cannot approve bidders during the auction.



### 92A: NAPOLEONIC PRISONER OF WAR BONE SEWING BOX

USD 700 - 900

late 18th/early 19th c.; hinged lid with pin cushion 5.5"h; 9"w; 6.5"d NOTE: Apologies, we cannot approve bidders during the auction.

## CRN ANNUAL FALL AUCTION



### 93: NEW YORK CHIPPENDALE MAHOGANY SECRETARY, COOLIDGE FAMILY

USD 8,000 - 12,000

c. 1750-1770, three-part, dense San Domingo mahogany, poplar secondary wood; full-bonnet top with dental molding and original carved and gilded flame finials, gilded carved eagle to center; mid section, band of repeating oval molding above a pair of blind doors with flame mahogany panels with gilded surround; fall-front lid, the interior fitted with a center compartment with original mirror, flanked by sliding compartments, cubby holes and drawers; lower part with four graduated drawers having original bat wing brass; bold ball and claw feet with carved knees; 8'6"h incl. eagle finial; case 44"w; 23"d; at foot 48"wFrom the the home of a Beacon Hill, Boston couple, descended through the Coolidge family. An almost identical secretary stands in the Diplomatic Reception Rooms, US Department of State, Washington, D.C. The secretary is Washington is missing finials.NOTE: Apologies, we cannot approve bidders during the auction.



### 94: LARGE PAIR OF CHINESE EXPORT PORCELAIN MANDARIN RIBBED VASES

USD 2,000 - 3,000

baluster-form overall alternating panels of people and florals; applied gilt foo dogs to neck, 26"hFrom the prominent collection of a North Shore gentleman, selectively assembled for over fifty years.NOTE: Apologies, we cannot approve bidders during the auction.



### 95: NEW YORK CLASSICAL CARVED MAHOGANY CARD TABLE

USD 700 - 900

hinged, rectangular top with rounded edge; the apron with brass molding, original felt when open; carved pedestal base; acanthus carved knees, the four feet ending in brass caps on casters; 29.5"h; 36"w; 18"dDescended through a Boston Beacon Hill family.NOTE: Apologies, we cannot approve bidders during the auction.



### 96: 19TH C. SCRIMSHAW WHALE TOOTH, NERIED MAIDENS

USD 1,500 - 2,000

each side decorated with a Neried sea nymph seated on a rock, below one image NEREID; an arrow between them on one side of the tooth; each image above a leafy garland; 6"; 2.5"w base In Greek mythology there was fifty Nereids, daughters of Nereus, The Old Man of the Sea and the Oceanid Doris. NOTE: Apologies, we cannot approve bidders during the auction.



### 97: PAIR OF 19TH C. SCRIMSHAW WALRUS TUSKS

USD 500 - 700

one decorated with boy eating porridge sitting amongst foliage; the other, a boy seated in foliage feeding birds, reverse undecorated; tusks measure 15.5"h; mounted on old wood base 16 by 4 in.NOTE: Apologies, we cannot approve bidders during the auction.



### 98: 19TH C. SCRIMSHAW WHALE TOOTH, LIBERTY

USD 1,200 - 1,800

decorated with full-masted ship; above, a compass rose and dated 1776; the reverse with American emblem with eagle LIBERTY; the base circled with sawtooth band; 4.5"; 2.5" at baseNOTE: Apologies, we cannot approve bidders during the auction.



### 99: 19TH C. SCRIMSHAW WHALE TOOTH

USD 1,000 - 1,500

decorated with a fully-rigged ship; the reverse with three figures on deck in a brawl (two sailors, one protecting himself with shield, the third an indigenous man); 5.5"; 2.5" baseNOTE: Apologies, we cannot approve bidders during the auction.



## CRN ANNUAL FALL AUCTION



### 100: 19TH C. SCRIMSHAW WHALE TOOTH

USD 1,000 - 1,500

decorated with full figure of a woman wearing a pin-prick dress and bonnet; reverse undecorated; 4.5"; 2.25" at base  
NOTE: Apologies, we cannot approve bidders during the auction.



### 101: 19TH C. SCHRIMSHAW WHALE TOOTH

USD 1,000 - 1,200

decorated with a seated Lady Liberty with eagle; red polychrome lines; 5.5"h; 2" at base  
NOTE: Apologies, we cannot approve bidders during the auction.



### 102: PAIR OF 19TH C. SCRIMSHAW WHALE TEETH

USD 1,000 - 1,500

each with identical decoration of a garden structure beneath weeping willows; hatchcross band at base; 6"; 2" at base; on wood base (not attached)  
NOTE: Apologies, we cannot approve bidders during the auction.



### 103: QUEEN ANNE WALNUT AND MAPLE HIGHBOY

USD 1,500 - 2,000

2-part, flat molded top with two over four graduated drawers; bottom with one over three graduated drawers; 71"h; bottom case 37.5"w, 21"d  
One drawer lined with a Philadelphia 1829 newspaper. Descended from the great grandmother in Virginia to the present family member, Providence, RI. Descended through a Richmond, Virginia family to the present owners, Providence, RI.  
NOTE: Apologies, we cannot approve bidders during the auction.



### 104: PENNSYLVANIA CHERRY CHIPPENDALE CHEST

USD 1,000 - 1,500

four graduated drawers; fluted quarter columns; ogee feet 35.5"h; case 37"w; 19.5"d; top 39"w; 20"d  
NOTE: Apologies, we cannot approve bidders during the auction.



### 105: PENNSYLVANIA CHIPPENDALE BIRD CAGE BREAKFAST TABLE

USD 1,500 - 2,000

old patina; round, molded dish top; the turned pedestal, in-curving legs ending in snake feet; 28.5"h; tilting top 35" diam.  
The collection of a Nantucket gentleman.  
NOTE: Apologies, we cannot approve bidders during the auction.



### 106: CHINA TRADE 3-PART CARVED SECRETARY/DESK

USD 800 - 1,200

mid 19th c., top section with pair of door with tombstone glass panels; fall front lid with fitted interior; case with three drawers with inset brass hardware; gadrooned skirt; tapering closed lotus feet; 70"h; 35.5"w; 16"d  
NOTE: Apologies, we cannot approve bidders during the auction.

## CRN ANNUAL FALL AUCTION



### 107: PAIR OF AMERICAN FOLK ART PORTRAITS, 19th c.

USD 2,000 - 3,000

Captain and Mrs. Grace Doty Capt. Levi F. Doty (b. April 26, 1803-d. Aug. 18, 1890) "Husband of Grace A. Fish. He was a whaleboat captain. Part owner of Barque George Washington. He took his wife on trips." Grace Fish Doty, b. 1803-1872 "Wife of Capt. Levi F. Doty / Aunt of Helen Mars Fisher who was mother of Julia Watts Jones Collins who was mother of Clayton Collins (Sr.)" Hdstn. (headstone) at East End Meetinghouse, Hatchville, Mass." (East Falmouth, Cape Cod) both unsigned; o/panel; 14 by 10.5 in.; unframed NOTE: Apologies, we cannot approve bidders during the auction.



### 107A: CHINA TRADE PORTRAIT OF SHIP'S CAPTAIN

USD 1,000 - 1,500

c. 1850s, seated gentleman, elbow resting on a red lacquer table o/c, 12 by 9.5 in.; China trade frame 15.25 by 13 in. NOTE: Apologies, we cannot approve bidders during the auction.



### 108: AMERICAN PRIMITIVE PORTRAIT, early 19th c.

USD 2,000 - 3,000

attrib. Zedekiah Belknap (1781-1858) seated girl holding a doll and flowers o/c (relined); 30.5 by 24 in.; framed 38.75 by 32.75 in. Prov. Skinner's, Bolton, MA 2007 NOTE: Apologies, we cannot approve bidders during the auction.



### 109: BOSTON FEDERAL MAHOGANY AND SATINWOOD CARD TABLE

USD 1,500 - 2,500

poss. Seymour workshop serpentine-front; satinwood apron; lunette inlay to apron and lid; tapering reeded legs; 29.5"h; 38"w; 18.5"d NOTE: Apologies, we cannot approve bidders during the auction.



### 110: PHILADELPHIA WALNUT CHIPPENDALE CHEST

USD 1,500 - 2,000

late 18th c., four graduated drawers, bat wing brass appears to be original; fluted quarter columns; ogee feet; 36"h; case 35.5", 20.5"; top 37"w, 22"d Descended through a Richmond, Virginia family to the present owners, Providence, RI. Purchased in 1947 from Sylvan Bender, Wayne, Pennsylvania. NOTE: Apologies, we cannot approve bidders during the auction.



### 111: NEW ENGLAND HEPPLEWHITE INLAID MAHOGANY SIDEBOARD

USD 1,000 - 1,500

serpentine front with bowed ends; three drawers over four doors with band and line inlay; six tapering, fluted legs; 40.75"h; 65"w; 25.5"d From a Providence, RI family. NOTE: Apologies, we cannot approve bidders during the auction.



### 112: NEW ENGLAND FEDERAL MAHOGANY SERPENTINE CARD TABLE

USD 1,000 - 1,500

Boston, c. 1810, satinwood front with oval panel; fluted carved outset corners; turned tapering legs ending in high feet; 30"h; 30"w; 19"d The collection of a Nantucket gentleman. NOTE: Apologies, we cannot approve bidders during the auction.

## CRN ANNUAL FALL AUCTION



### 112A: CHIPPENDALE MAHOGANY WALL MIRROR

USD 600 - 800

late 18th c., pierced crest with applied gilt bird and gilt leaves to sides, overall incised and pierced scrolling foliate; 41"h; 23.5"w Descended through a Richmond, Virginia family to the present owners, Providence, RI. Purchased from Israel Sack in 1965, from the estate of Thomas Wilson.NOTE: Apologies, we cannot approve bidders during the auction.

---



### 113: NEW ENGLAND SMALL-SIZED PAINTED CUPBOARD

USD 1,000 - 1,500

late 18th/early 19th c.; old green/blue paint; raised panel door; three shelves inside; boot jack ends; 35"h; case 19.5"w; top 21 in w; 13"dNOTE: Apologies, we cannot approve bidders during the auction.

---



### 114: AMERICAN, 19th c. CLIPPER SHIP

USD 500 - 800

three-masted clipper ship at sea, American flagsgn. l.r. Fellowso/c; 24.25 by 30 in.; framed 27.75 by 33.25 in.NOTE: Apologies, we cannot approve bidders during the auction.

---



### 115: ENGLISH WARSHIP REVERSE PAINTING ON GLASS

USD 800 - 1,200

H.M.S. TRAFALGAR 120 GUNS, c. 1844; 14.5 by 21 in. (sight); original ogee frame 19.5 by 26 in.NOTE: Apologies, we cannot approve bidders during the auction.

---



### 116: AMERICAN WILLIAM AND MARY WALNUT FALL-FRONT DESK

USD 1,500 - 2,000

two over two long graduated drawers; stepped fitted interior; ball feet; 39.5"h; case 34"w, 19"d Descended through a Richmond, Virginia family to the present owners, Providence, RI.In 1952 the desk was on loan to an exhibit at the Richmond, Virginia Museum of Fine Arts of Southern Furniture 1620-1820.NOTE: Apologies, we cannot approve bidders during the auction.

---



### 117: 18TH C. NEW ENGLAND CHIPPENDALE CORNER CHAIR

USD 800 - 1,200

old surface; two pierced back splats; straight legs joined by cross-stretcher; 31"h; 30"w; 21"d; 19" seat hThe collection of a Nantucket gentleman.NOTE: Apologies, we cannot approve bidders during the auction.

---



### 118: EARLY 19TH C. LARGE BURLWOOD BOWL

USD 1,500 - 2,000

old dry surface; lipped rim; turned band to exterior; 17.5" diam.; 4.5"hNOTE: Apologies, we cannot approve bidders during the auction.

---

## CRN ANNUAL FALL AUCTION



### 119: ASSEMBLED PAIR OF DECORATED DOME-TOP BOXES

USD 800 - 1,200

early 19th c.; original white paint with red heart, red tulip and leaf decoration, 8.5"h; 17"w; 10.75"dNOTE: Apologies, we cannot approve bidders during the auction.



### 120: CHILD'S WALNUT JELLY CUPBOARD

USD 800 - 1,200

late 18th c., poss. Virginia; pair glazed doors above three side by side drawers, pair of cupboard doors; 45"h; 29.5"; 13"dDescended through a Virginia family to the present owners, Providence, RI.NOTE: Apologies, we cannot approve bidders during the auction.



### 121: NEW ENGLAND BOW BACK WINDSOR ARM CHAIR

USD 800 - 1,200

19th c., paint over original grain; unusual to have an 18"seat height; 40"h; 21.25"w; 15.5"dNOTE: Apologies, we cannot approve bidders during the auction.



### 121A: PAIR OF REVERSE PAINTINGS ON GLASS, GEORGE AND MARTHA WASHINGTON

USD 500 - 700

24 by 20.5 in.; original gilt frames 27.5 by 23.5 in.NOTE: Apologies, we cannot approve bidders during the auction.



### 122: CHINESE EXPORT PORCELAIN MASONIC TANKARD

USD 800 - 1,200

mid 19th c., vivid and various Masonic decoration, double strap handles; rim with blue band with gold stars; 6"h; opening 4.75"diam.NOTE: Apologies, we cannot approve bidders during the auction.



### 123: LARGE SCRIMSHAW MASONIC WALRUS TUSK

USD 1,000 - 1,500

19th c. inscribed "Royal Arch Masonry" above the Holy Royal Arch/Heroines of Jericho crest; abundantly decorated on both sides with Masonic symbols incl. tools, a coffin under a tree, Noah's ark, a well dressed woman, pair of pillars, etc.; 16.5"; on metal stand.The collection of a New York gentleman. NOTE: Apologies, we cannot approve bidders during the auction.



### 124: SCHEDLER TERRESTRIAL 3" GLOBE

USD 800 - 1,200

Joseph Schedler (1813-1887) Hudson City, New Jersey, c. 1868patented November 24th, 1868, original round display box and coverweighted, paste-board globe labeled J. Schedler's. / Terrestrial / Globe / 3 inches Diam'r / Prize Medal, Paris Exp. / 1867 / Patented November 24th 1868the case of embossed paperboard, the cover printed with similar text, with a turned wooden knob/pedestal on which the globe easily balances; case 3.25"diam., ht. 3.5"h Interestingly, the globe is erroneously identifying Schedler's bronze medal-winning globe as a "First Prize" winner at the 1867 Paris Exposition. NOTE: Apologies, we cannot approve bidders during the auction.

## CRN ANNUAL FALL AUCTION



### 125: JOSLIN, BOSTON TERRESTRIAL FLOOR GLOBE, 20&

USD 1,500 - 2,000

19th c., Gilman Joslin (1804-1886); mounted on ornate iron stand; total 43" tallNOTE: Apologies, we cannot approve bidders during the auction.



### 126: GERMAN TERRESTRIAL TABLE GLOBE, 12"

USD 800 - 1,200

Cloumbus-Erdglobes/ Columbus-Verlag G. M. B. H./ Berlin-Lichterfeldeon carved and gilded wood stand with red decal on base J.B. Metzler'sche / Stuttgart...total 28"hNOTE: Apologies, we cannot approve bidders during the auction.



### 127: MALBY TERRESTRIAL TABLE GLOBE, 12"

USD 800 - 1,200

Thomas Malby & Son...Agent George Philip & Son, Londonc. 1886, walnut stand with fluted legs; 20" total h2NOTE: Apologies, we cannot approve bidders during the auction.



### 128: 19TH SAILOR'S MINIATURE CHEST OF DRAWERS

USD 600 - 800

bone inlay and bone knobs; 16.25"h; 10.25"w; 5"dNOTE: Apologies, we cannot approve bidders during the auction.



### 129: 19TH C. PANBONE RETICULATED BASKET

USD 1,500 - 2,000

c. 1850, oval-form with tin liner; swing handle; metal pin construction; written on wood bottom in pencil St. Helena; 6"h; 7"w; 5"dNOTE: Apologies, we cannot approve bidders during the auction.



### 130: LARGE SCRIMSHAWED WALRUS TUSK

USD 1,000 - 1,500

19th c., the pin prick decoration of a full-body figure of a Middle Eastern man; 17", on metal standThe collection of a New York gentleman.NOTE: Apologies, we cannot approve bidders during the auction.



### 131: (2) 19TH C. SCRIMSHAWED WHALE'S TEETH

USD 1,000 - 1,500

decorated on one side, each with red coloring enhancements; one depicting a full-bodied girl and smaller boy to her side, 6"; the other with a half portrait of a woman wearing a hat, 6"Similar side decoration of stylized design, each made by the same hand.The collection of a New York gentleman; purchased at Northeast Auctions.NOTE: Apologies, we cannot approve bidders during the auction.



## CRN ANNUAL FALL AUCTION



### 132: 19TH C. SCRIMSHAW WHALE TOOTH

USD 800 - 1,200

depicting a whaling scene; the reverse with a half-portrait of a woman "ELIZABETH" with two hearts above her head; 6"The collection of a New York gentleman.NOTE: Apologies, we cannot approve bidders during the auction.



### 132A: 19TH C. SCRIMSHAW WHALE'S TOOTH

USD 800 - 1,200

depicting a whaling scene showing a harpooned whale; the reverse undecorated; 6.5"The collection of a New York gentleman.NOTE: Apologies, we cannot approve bidders during the auction.



### 133: 19TH C. SCRIMSHAW WALRUS TUSK

USD 800 - 1,200

19th c., decorated with a profile portrait of a gentleman wearing a medal; in the middle, a stout woman wearing a plaid shawl; and above, a young brother and sister; the reverse undecorated; 16.5"; on metal standThe collection of a New York gentleman.NOTE: Apologies, we cannot approve bidders during the auction.



### 134: 19TH C. SCRIMSHAW WHALE'S TOOTH

USD 800 - 1,200

the tip circled with a band and an anchor and dated 1809 above a war ship at full sail; the reverse with a woman wearing a bonnet with her hand on her heart MARIE; 6"The collection of a New York gentleman.NOTE: Apologies, we cannot approve bidders during the auction.



### 135: PAIR OF 19TH C. SCRIMSHAW WALRUS TUSKS

USD 800 - 1,200

each decorated on front with two well dressed women and a Prince of Wales feather plume; the reverse undecorated; 18.5"; mounted on custom metal standsThe collection of a New York gentleman.NOTE: Apologies, we cannot approve bidders during the auction.



### 136: (on 4) 19TH C. SCRIMSHAW WHALE TEETH

USD 800 - 1,200

a small tooth depicting a whaling scene engraved Niger and initialed RLH; the reverse inscribed to GRANNY /from BENJIE /& ALEX / 6/69, 4.5" (age appropriate tight cracks); another decorated on one side with a 1784 dated engraving of an eagle; 4"; another small tooth depicting and eagle and 1784 within an oval; 4"; along with (2) undecorated teeth; 5" and 6"The collection of a New York gentleman.the second with a whaling scene with NIGER and initialed RLH, 4.5"; along with a small undecorated tooth, 4.5"NOTE: Apologies, we cannot approve bidders during the auction.



### 136A: (on 2) NORTH WEST WALRUS TUSK CRIBBAGE BOARD

USD 400 - 600

on turned feet, 14"; along with another scrimshaw tusk cribbage board with polar bear, fish and figure in a kayak, faintly sgn. John V; 17" (repair)The collection of a New York gentleman.NOTE: Apologies, we cannot approve bidders during the auction.

## CRN ANNUAL FALL AUCTION



### 137: SAILOR'S DOUBLE SHELL VALENTINE, FORGET ME

USD 700 - 900

19th c., octagonal wood case; 9"NOTE: Apologies, we cannot approve bidders during the auction.

---



### 138: 19TH C. GILDED ROOSTER WEATHERVANE

USD 800 - 1,200

attrib. J.W. Fiske. perched on a directional arrow; 22"h; 24"wNOTE: Apologies, we cannot approve bidders during the auction.

---



### 139: 18th c. NEW ENGLAND PAINTED TAVERN TABLE

USD 2,000 - 3,000

old brown paint, oval top; splayed turned legs joined by four stretchers; 28"h; top 30" by 20"NOTE: Apologies, we cannot approve bidders during the auction.

---



### 139A: VERMONT PAINTED BLANKET CHEST

USD 1,500 - 2,000

1820-1840, Shaftesbury, Vermontthe front with rust colored, calligraphy feather design on mustard ground; sponge decoration to top; sides with green sponge and rust painted panels; hinged top, ditty box to interior; bracket fee; 22.5"h; 38"w; 17.5"NOTE: Apologies, we cannot approve bidders during the auction.

---



### 140: PHILADELPHIA CHIPPENDALE MAHOGANY TEA TABLE

USD 1,000 - 1,500

tilting dish-top; acanthus carved knees; ball and claw feet; 28"h; 31"diam.NOTE: Apologies, we cannot approve bidders during the auction.

---



### 141: AMERICAN GRAIN DECORATED CHILD'S SCHOOL MASTERS DESK

USD 1,500 - 2,000

shaped backplash, slanted writing surface; two banks of four drawers each; turned feet; 23.5"h; 17.5"w; 10"dNOTE: Apologies, we cannot approve bidders during the auction.

---



### 142: 18TH C. SMALL NEW ENGLAND WATCH HUTCH BOX

USD 300 - 500

old surface; with tombstone sliding glass front; the interior with a needlepoint panel; metal loop hanger to top; 5"h; 3"w; 2"d From a Maine family.NOTE: Apologies, we cannot approve bidders during the auction.

---



### 143: SCOTT LEIGHTON (American, 1849-1898)

USD 800 - 1,200

black horse in a landscapesgn. l.r. Scott Leighton/c; 18 by 24 in.; framed 21.75 by 27.75 in.NOTE: Apologies, we cannot approve bidders during the auction.

---

## CRN ANNUAL FALL AUCTION



**144: NIKOLAY TYSLAND (TUSLAND) LEGANGER (Boston/New York, 1832-1950)**

USD 800 - 1,200

Highland Pasturemountain scene with sheep by lakesgn. l.l. N. T. Leganger; also verso sgn. and titled in ink scripto/c; 30 by 25 in.; gilt frame 36 by 31 in. From the home of the consignors great-grandfather, Providence, RI NOTE: Apologies, we cannot approve bidders during the auction.



**145: FRANK LOUIS JIROUCH (American, 1878-1970)**

USD 500 - 800

Rockport Harbor, Massachusettsgn. l.c. Jirouch o/b: 14 by 18 in.; framed 21.5 by 25.5 in. NOTE: Apologies, we cannot approve bidders during the auction.



**146: J PITERIL (American, 20th c.)**

USD 400 - 600

Rotterdam Harbor, tugs towing a freightersgn. l.r., J.?. Peteril 24.25 by 36.25 in.; framed 28 by 40.25 in. NOTE: Apologies, we cannot approve bidders during the auction.



**147: AKSEL JORGENSEN (Denmark, 1883-1957)**

USD 500 - 700

figures in a city streetsgn. and dated l.r. Aksel Jorensen 1908o/c; 15 by 17 in; gilt frame 21 by 23 in. NOTE: Apologies, we cannot approve bidders during the auction.



**148: DMITRI ARKADIEVICH NALBANDIAN (Russian, 1906-1993)**

USD 1,000 - 1,500

Crimea, ship docked along shorelinesgn. l.r., o/b, 12.5 by 18 in., framed, under plexiglass 18 by 25 in. NOTE: Apologies, we cannot approve bidders during the auction.



**149: poss. ARTHUR C. GOODWIN (American, 1864-1929)**

USD 1,000 - 1,500

view of Boston from Jamaica Pondsgn. l.l....; o/c (re-lined), 14 by 20 in.; ornate gilt frame (poss. original) 26 by 31 in. NOTE: Apologies, we cannot approve bidders during the auction.



**150: HERMANN DUDLEY MURPHY (American/Massachusetts, 1867-1945)**

USD 700 - 900

study of a headM within circle within image u.r.; sgn. l.r. H.D. Murphy 93 and monogrametching: 6.75 by 5.5 in. (sight); matted, framed under glass 14 by 12 in. old paper label on reverse with title and artist Purchased from a descendant of H.D. Murphy NOTE: Apologies, we cannot approve bidders during the auction.

## CRN ANNUAL FALL AUCTION



### 151: LARGE ENGLISH MOCHAWARE PITCHER

USD 2,000 - 3,000

18/19th c., double row of earthworm decoration; black and rust bands; 9"h; 11.5" handle to spout This entire group of mocha is from a single Cambridge, MA collector of Americana. NOTE: Apologies, we cannot approve bidders during the auction.



### 152: ENGLISH MOCHAWARE CHOCOLATE POT

USD 2,500 - 3,500

marbled decoration with applied white swags circling the body; incised leaf decoration to base of spout; 10"h; 8" handle to spout Sticker: Zeitlan Collection (sold Skinner's 2006) NOTE: Apologies, we cannot approve bidders during the auction.



### 153: ENGLISH MOCHAWARE SMALL FOOTED BOWL

USD 400 - 600

marbled decoration, applied white swag decoration circling the body, 6"w; 6"diam. NOTE: Apologies, we cannot approve bidders during the auction.



### 154: ENGLISH MOCHAWARE TANKARD

USD 500 - 700

18th/19th c.; shades of rust, white and black marbled decoration; 6.5"h; opening 4.25"diam. NOTE: Apologies, we cannot approve bidders during the auction.



### 155: ENGLISH MOCHAWARE PITCHER

USD 2,000 - 3,000

18/19th c.; unusual design of blue and white rectangles on chocolate brown ground alternating with gold leaves; rim with band of stars and ovals above a brown and white rouletted band, 8.75"h; 9" handle to spout NOTE: Apologies, we cannot approve bidders during the auction.



### 156: ENGLISH MOCHAWARE SMALL PITCHER

USD 500 - 700

early 19th c.; blue, white, black, rust and tan marbled decoration; green engine turned band to rim; 6.5"h NOTE: Apologies, we cannot approve bidders during the auction.



### 157: ENGLISH MOCHAWARE FOOTED SALT SHAKER

USD 300 - 500

decorated with alternating rust and brown engine turned bands; 5"h; 2"w NOTE: Apologies, we cannot approve bidders during the auction.



### 158: ENGLISH MOCHAWARE CREAMER JUG WITH LID

USD 1,500 - 2,000

marbled and combed decoration; green engine-turned band at neck; raised on three paw feet; 5.5"h NOTE: Apologies, we cannot approve bidders during the auction.

## CRN ANNUAL FALL AUCTION



### 159: ENGLISH MOCHAWARE TANKARD

USD 1,000 - 1,500

18th/early 19th c.; footed tankard with dendritic tree decoration on gray ground circling the body, framed by bands of orange and black undulating and straight lines; 6.5"h; opening 4" diam; 6"wNOTE: Apologies, we cannot approve bidders during the auction.



### 160: ENGLISH MOCHAWARE FOOTED SALT SHAKER

USD 400 - 600

18/19th c.; circled with earthworm decoration on blue ground; band of green incised leaf design above; 5"h; 2.5"wNOTE: Apologies, we cannot approve bidders during the auction.



### 161: ENGLISH MOCHAWARE SMALL BOWL

USD 400 - 600

c. 1810, rust, cream and black marbled body with green banded rim, 3"h; 6" diameterNOTE: Apologies, we cannot approve bidders during the auction.



### 162: ENGLISH WHIELDON MOCHAWARE TEAPOT

USD 600 - 800

late 18/early 19th c.; overall brown tortoise shell decoration, green engine-turned bands to lid and body, four blue dots circle the body; 7"h; 9" handle to spout NOTE: Apologies, we cannot approve bidders during the auction.



### 163: PAIR OF FRENCH MOCHAWARE JARDINIERES WITH DRIP TRAYS

USD 1,200 - 1,700

flared-cylindrical-form with dendritic tree decoration on cream colored ground, with conforming drip trays; 7" total h; opening 7" diam.NOTE: Apologies, we cannot approve bidders during the auction.



### 164: ENGLISH MOCHA AND GRAVELWARE SMALL PITCHER

USD 300 - 500

early 19th c., body overall decorated with textured, imbricated design enhanced with yellow dots; engine-turned green bands to upper rim and base; 5"h; 6"wNOTE: Apologies, we cannot approve bidders during the auction.



### 165: ENGLISH MOCHAWARE FOOTED SALT SHAKER

USD 300 - 400

dendritic tree design on blue ground; 4.5"hNOTE: Apologies, we cannot approve bidders during the auction.



### 166: ENGLISH MOCHAWARE TANKARD

USD 1,500 - 2,000

late 18th/early 19th c.; rust, orange, dark brown, white, and black marbled and combed decoration; green engine-turned band to rim; 6.25"h; 4" diam.NOTE: Apologies, we cannot approve bidders during the auction.



## CRN ANNUAL FALL AUCTION



### 167: ENGLISH MOCHAWARE LARGE PITCHER

USD 1,000 - 1,500

large band of alternating vertical blue, white and yellow stripes, as well as vertical foliate on unusual creamy ochra ground; foliate band to neck, double row of stars to base; decoration to handle; 9.5"; 9.5"handle to spout NOTE: Apologies, we cannot approve bidders during the auction.



### 168: ENGLISH MOCHAWARE TANKARD

USD 800 - 1,200

late 18th/early 19th c.; rust, gray and white marbled decoration; brown band to rim; 6.5"6"h; 4"diam.NOTE: Apologies, we cannot approve bidders during the auction.



### 169: SMALL ENGLISH MOCHAWARE CHILD'S MUG

USD 700 - 900

rust, blue black and white marbled decoration, 4"hNOTE: Apologies, we cannot approve bidders during the auction.



### 170: ENGLISH MOCHAWARE FOOTED SALT SHAKER

USD 300 - 400

footed salt shaker with white undulating line decoration on dark brown base wrapped around base with blue borders, tip decorated with blue gradient; 5"h; 2"wNOTE: Apologies, we cannot approve bidders during the auction.



### 171: LARGE ENGLISH MOCHAWARE PITCHER

USD 700 - 900

mid 19th c., band of blue and white bullseyes on brown ground; blue band at top, additional bands, one with raised wavy lines; 8"h; 9.5" w spout to handleNOTE: Apologies, we cannot approve bidders during the auction.



### 172: ENGLISH MOCHAWARE CREAM PITCHER

USD 700 - 900

double bands of dendritic seaweed on rust ground, framed by engine turned bands in brown and rust; feathered handle; 5"h; opening 3" diam; 5.5"wNOTE: Apologies, we cannot approve bidders during the auction.



### 173: FINE AND LARGE ENGLISH GEORGIAN WALL MIRROR

USD 2,500 - 3,500

all original and untouched condition; the crest with gilt arches centering pierced shield and scrolling acanthus leaves; applied gilt fruit and leaf garlands to sides; original glass; 61.5"h; 29.5"w at widestNOTE: Apologies, we cannot approve bidders during the auction.



### 174: PAIR OF ENGLISH GEORGE III SATINWOOD AND MAHOGANY GAMING TABLES

USD 2,500 - 3,500

demilune-form; the tops with wide banded inlay; the playing surface with light blue felt with brown leather border having embossed dot; line inlay to apron and sides; double-swing, fluted, tapering legs; 30.5"h; 41"w; 20"dNOTE: Apologies, we cannot approve bidders during the auction.

## CRN ANNUAL FALL AUCTION



### 175: PAIR OF FRENCH GILT BRONZE AND MARBLE CANDELABRA

USD 800 - 1,200

19th c., six-light; center gilt bronze candle holder surrounded by five arms; mounted on veined green marble corinthian column with gilt bronze caps and base; square plinth 27h; 13" at widestNOTE: Apologies, we cannot approve bidders during the auction.



### 176: ENGLISH GEORGE III MAHOGANY ARCHITECT'S DESK

USD 3,000 - 5,000

the rectangular top with spindle gallery lifts to become an adjustable, 4-level work surface; hidden side levers pop out a paper rest; the front legs pull out to reveal a green embossed leather top, several compartments hidden beneath, containing two secret drawers; pull out candle slide on two sides; straight legs encasing turned legs ending in hidden casters; 34"h incl. the 2"gallery; 33"w; 21.5"dNOTE: Apologies, we cannot approve bidders during the auction.



### 177: ENGLISH GEORGIAN TORTOISE SHELL TEA CADDY

USD 1,000 - 1,500

sarcophagus-form; double fitted interior with shell lids; on bone ball feet; 6.5"h; 7.25w; 4.5"dNOTE: Apologies, we cannot approve bidders during the auction.



### 178: ENGLISH GEORGIAN TORTOISE SHELL TEA CADDY

USD 700 - 900

tapering rectangular-form; double fitted interior with shell lids; silver escutcheon and blank lid plaque; metal ball feet; 5"h; 5.25"w; 3.5"dNOTE: Apologies, we cannot approve bidders during the auction.



### 179: ENGLISH GEORGIAN TORTOISE SHELL TEA CADDY

USD 700 - 900

rectangular-form canted corners; double fitted interior with shell lids; silver escutcheon and blank plaque to front; metal ball feet; 5.5" h; 5.75"w; 3.5"dNOTE: Apologies, we cannot approve bidders during the auction.



### 179A: ENGLISH GEORGIAN TORTOISE SHELL TEA CADDY

USD 800 - 1,200

interior lid handles and lining of body and outer lid rims also bone ; with silver furnishings; bone bun feet; 4.75" h; 6.75"w; 3.75"dNOTE: Apologies, we cannot approve bidders during the auction.



### 180: PAIR OF ENGLISH GEORGE III INLAID MAHOGANY KNIFE URNS

USD 2,000 - 3,000

late 19th c., large acorn finial; diamond and line inlay; interior fitted with four round tiers of inserts; 29"h; when fully open 39"h; 12.5"diam.; on 8.75" sq. baseNOTE: Apologies, we cannot approve bidders during the auction.

## CRN ANNUAL FALL AUCTION



### 181: PAIR OF ENGLISH EDWARDIAN SATINWOOD ARMCHAIRS

USD 800 - 1,200

backs with painted oval portrait of a woman and floral garlands, also painted florals on arms and seatrail, in the manner of Angelica Kauffman; caned backs, seats, and sides (double caned); on fluted tapering legs; satin yellow, floral upholstered seat and back cushions; 42.5"h; 26"w; 22"dNOTE: Apologies, we cannot approve bidders during the auction.



### 182: ITALIAN CLASSICAL MARBLE FIGURAL GROUP

USD 500 - 700

19th c., Aeneas carrying his father, Anchises; marble sculpture; 21"h; 15"w; 7.5"dNOTE: Apologies, we cannot approve bidders during the auction.



### 183: 18TH C. ENGLISH MAHOGANY TALL CLOCK, S. COCHRAN

USD 1,000 - 1,500

Sam. Cochran, Londonengraved brass face and dial with strike and silent dial; 8'3"h (to top of brass finial); base 21"w, 10"dDescended through a Richmond, Virginia family to the present owners, Providence, RI. See Brittons 'Old Clocks and Watches' E.P. Dutton, 1956. Samuel Cochran is listed as working at 291 Wapping Lane, London, 1760-1794.NOTE: Apologies, we cannot approve bidders during the auction.



### 184: 18TH C. SMALL LANTERN CLOCK, EDMOND SMITH

USD 1,000 - 1,500

Edm. Smith / Bury From / London No. 361strapped bell over four finials, two pierced frets; front with embossed panels, uppermost set etched round brass medallion; Roman numeral chapter ring with diamond half hour marks, single hand; weight driven movement; Two lead ring weights, and two cylinder-form weights; 7.5"h; 5"w; 4.75"d; with later oak wall shelfNOTE: Apologies, we cannot approve bidders during the auction.



### 185: ENGLISH GEORGE III INLAID MAHOGANY DECANTER BOX

USD 700 - 900

c. 1815, fitted with (6) gilt embellished glass bottles and (2) claret glasses; the case decorated with inlaid swag and tassel design to front; hinged lid with satinwood band and checker inlay to edges; inlaid band along bottom edge; brass handles to either side; 10" h; 10"w; 8.5"dLetter of provenance: "This Wine Chest was a wedding present to Zechariah Chafee, b. Providence, RI (1785-1840) and Mary Eddy Mar. 26, 1807. I would like Richard S. Chafee to have it. / Francis H. Chafee."From the estate of a Providence Rhode Island woman, a close relative of the Chafee family.NOTE: Apologies, we cannot approve bidders during the auction.



### 186: SET OF (25) MINIATURE OIL LANDSCAPE PAINTINGS

USD 1,500 - 2,000

late 19th c., American or English, initialed I.r. Wvarious landscapes painted on the reverse of playing cards; 2.25 by 3.5 in.; original cardboard mats; unframed 4 by 5 in.Provenance: acquired from the Rhode Island estate of Sarah Kimball, a close relative of Richard S. Chafee, descendant of Zechariah Chafee (1785-1840).Letter states "Dick's parents left them in the closet under the stairs. They came from Aunt Sarah Kimball who lived on Prospect St...."NOTE: Apologies, we cannot approve bidders during the auction.



### 187: ENGLISH WALNUT FIRESIDE BENCH

USD 1,000 - 1,500

18/19th c., over-upholsterd seat; cabriole legs with carved knees;21"h; 49"w; 19.5"dNOTE: Apologies, we cannot approve bidders during the auction.

## CRN ANNUAL FALL AUCTION



### 188: ENGLISH GEORGE III BIRDSEYE MAPLE SEWING STAND

USD 700 - 900

one drawer with compartments; bag slide with rectangular velvet bag; turned legs on brass casters; 29.5"h; 22"w; 15.75"dNOTE: Apologies, we cannot approve bidders during the auction.



### 189: ENGLISH WILLIAM IV MAHOGANY TABLE TOP COLLECTION CABINET

USD 700 - 900

possibly to store pressed flowers, or small clay medallions; cupboard door with inlaid floral panel; 29 vertical, tin lined drawers; 17"h; 15"w 10"dNOTE: Apologies, we cannot approve bidders during the auction.



### 190: PAIR OF MEISSEN DECORATED PORCELAIN URNS

USD 500 - 800

blue crossed sword with T; in the manner of Carl Thieme (German, 19th c.)the fronts with a cartouche of a courting couple (different to each), the reverse with floral cartouche, both encircled with garlands of applied flowers; scrolling handles; mounted on square plinths with floral decoration; 22"h; 9"w; 6.5"d; base 5"sq.NOTE: Apologies, we cannot approve bidders during the auction.



### 191: ALFRED C. WEATHERSTONE (British, 1888-1929)

USD 1,000 - 1,500

portrait of Miss Weatherstone holding a basketgn. l.r. A.C. Weatherstone33 by 25 in.; later frame 40 by 31.5 in.Brass plaque on frame identifies artist and sitterNOTE: Apologies, we cannot approve bidders during the auction.



### 192: PAIR OF HEPPLEWHITE MAHOGANY SERPENTINE KNIFE BOXES

USD 500 - 700

inlaid shell to hinged lid; fitted interior; 13.5"h; 8.5"w; 8"dDescended through a Richmond, Virginia family to the present owners, Providence, RI.Purchased in 1947 from Harry Arons, Connecticut.NOTE: Apologies, we cannot approve bidders during the auction.



### 193: GILT BRONZE RELIEF BUST OF WELLINGTON, SHADOWBOX FRAME

USD 400 - 600

19th c., mounted on black velvet; 7" bust; original frame 21.75 by 18.5 in.NOTE: Apologies, we cannot approve bidders during the auction.



### 194: MAURICE GREIFFENHAGEN, RA (British, 1862-1931)

USD 5,000 - 8,000

sweet lips murmuringsgn. and dated u.l. Maurice Greiffenhagen / 1884plaque on frame: Sweet lips murmuring...find low whispers like their own most sweeto/c; 32 by 26 in.; framed 38.5 by 32.5 in.NOTE: Apologies, we cannot approve bidders during the auction.



### 195: BRITISH, 19th c.

USD 500 - 700

after William Collins (1788-1847)Happy as a Kingo/c (relined); 24 by 32 in.; gilt frame 28 by 36 in.From the home of the consignor's great-grandfather, Providence, RINOTE: Apologies, we cannot approve bidders during the auction.

## CRN ANNUAL FALL AUCTION



**196: CHARLES SILLEM LIDDERDALE (United Kingdom, 1831-1895)**

USD 800 - 1,200

portrait of a girl wearing a red headscarf monogrammed and dated l.r. CSL 47, o/c; 23 by 19.5 in.; framed 28.25 by 24.75 in. NOTE: Apologies, we cannot approve bidders during the auction.



**197: attrib. RICHARD WILSON (Great Britain/ Italy, 1744-1782)**

USD 600 - 800

landscape with stone church unsigned; o/c (old relined); 18 by 30 in. Old partial paper label on stretcher. NOTE: Apologies, we cannot approve bidders during the auction.



**198: BRITISH, 18/19th c.**

USD 400 - 600

landscape, horse and rider in road near lake unsigned; o/c; 16 by 15 in; original frame 21 by 20.5 in. NOTE: Apologies, we cannot approve bidders during the auction.



**199: attrib. BAREND CORNELIS KOEKKOEK (Netherlands/ Germany, 1803-1862)**

USD 500 - 800

the village stream unsigned o/c (relined); 19.5 by 32.25 in.; framed 24.25 by 37.25 in. Plaque with artist and title. NOTE: Apologies, we cannot approve bidders during the auction.



**200: W CRAIG HARVEY (American/New Jersey, 1882-1962)**

USD 400 - 600

Massachusetts, North Shore dock scene signed l.r. W. Craig Harvey o/c; 25 by 30 in; original frame 30 by 35 in. Harvey was a friend of artist John Carlson. NOTE: Apologies, we cannot approve bidders during the auction.



**201: PAIR OF ITALIAN CARVED AND POLYCHROMED PUTTI**

USD 1,000 - 1,500

18th c. or earlier; in the manner of Francesco Valsoldi; each a standing putto wearing a red sash, with upraised arm; 17" h incl. attached painted wood base. NOTE: Apologies, we cannot approve bidders during the auction.



**202: PAIR OF ITALIAN WALNUT AND BURL VENEERED COMMODINI**

USD 2,000 - 3,000

late 18th c., molded shaped top, over three serpentine drawers with band inlay and brass escutcheons, key to each commode; stepped molded base with shaped bracket foot; 31.5" h; 25.5" w; 16" d. NOTE: Apologies, we cannot approve bidders during the auction.



**203: ITALIAN BAROQUE INLAID TABLE-TOP CABINET**

USD 1,500 - 2,000

pierced brass gallery centering an oil on tin depicting the Annunciation; two banks of three drawers, each drawer has two panels of bone inlay depicting various motifs centered by a cupboard door with bone inlaid hunter on horseback; the interior with four drawers to the; bun feet; 34" h; 41.5" w; 13.5" d. NOTE: Apologies, we cannot approve bidders during the auction.



## CRN ANNUAL FALL AUCTION



### 204: ITALIAN PIETRA DURA, SPECIMEN AND MARBLE TABLE TOP

USD 2,000 - 2,500

late 19th c.; set in black marble; center round with pietra dura parrot perched on a cherry branch with specimen border; outer border with various specimens; 28"diam. NOTE: Apologies, we cannot approve bidders during the auction.



### 205: ITALIAN GRAND TOUR MICRO MOSAIC PAPERWEIGHT

USD 1,000 - 1,500

19th c., center with St. Peter's Square surrounded by eight various Roman landmarks; set in black marble; 5.5"diam. NOTE: Apologies, we cannot approve bidders during the auction.



### 206: FRAMED MICRO MOSAIC PLAQUE

USD 800 - 1,200

depicting Pliny's doves set in black marble 4.75 by 6.75 in.; ebonized frame 8.25 by 10.25 in. NOTE: Apologies, we cannot approve bidders during the auction.



### 207: ITALIAN PIETRA DURA PAPERWEIGHT

USD 200 - 400

19th c., pink rose set in black marble; 7" by 4.5"; .5"h NOTE: Apologies, we cannot approve bidders during the auction.



### 208: SMALL MALACHITE AND MARBLE GAMES BOARD

USD 700 - 900

checkerboard with white marble and malachite squares with inlaid brass edge, malachite surround; with 32 chess marble and malachite pieces (complete), 9"diam. NOTE: Apologies, we cannot approve bidders during the auction.



### 209: ITALIAN NEO-CLASSICAL CARVED AND GILDED CONSOLE TABLE

USD 2,000 - 3,000

shaped striated rouge marble top; the conforming apron with round floral panels, an applied ram's head to center and front corners; columnar, fluted legs, encircled with applied gilt garlands, joined by stretcher with centered urn; 32"h; 40.5"w; 20"d NOTE: Apologies, we cannot approve bidders during the auction.



### 210: 18TH C. ITALIAN OIL ON COPPER

USD 700 - 900

Madonna and Child/copper; unframed, 11 by 8 in. NOTE: Apologies, we cannot approve bidders during the auction.



### 210A: 18TH C. ITALIAN INLAID WALNUT OCCASIONAL TABLE

USD 1,500 - 2,000

rectangular marquetry top with compass inlay to center; drawer to apron; cabriole legs joined by x-shaped stretcher; scrolled feet; 29.5"h; 34.5"w; 26"d NOTE: Apologies, we cannot approve bidders during the auction.



## CRN ANNUAL FALL AUCTION



### 211: 18TH C. CONTINENTAL PAINTED COMMODE

USD 1,500 - 2,000

French or Italian, overall painted floral decoration on blue ground; paneled sides; three blocked drawers; paneled sides; 38"h; top 51"w; 23"d NOTE: Apologies, we cannot approve bidders during the auction.



### 212: ITALIAN ENAMEL PICTURE ON COPPER

USD 500 - 700

18/19th c., female saint kneeling before Mary, two angels nearby 7 by 7.75 in.; gilt frame 12 by 13 in. NOTE: Apologies, we cannot approve bidders during the auction.



### 213: ITALIAN BAROQUE INLAID WALNUT SIDE CABINET

USD 500 - 700

overall marquetry veneer; one drawer over cupboard door; long drawer below; all with turned wood knobs and line inlay; shelf to interior; bracket feet; 35.5"h; 30"w; 11"d NOTE: Apologies, we cannot approve bidders during the auction.



### 214: PAIR OF CONTINENTAL CARVED GILTWOOD MIRRORS

USD 800 - 1,200

29"h; 16.5"w NOTE: Apologies, we cannot approve bidders during the auction.



### 214A: PAIR OF CONTINENTAL GILT BRONZE ALTAR CANDLESTICKS

USD 700 - 900

19th c.; 32"h NOTE: Apologies, we cannot approve bidders during the auction.



### 215: ITALIAN CARVED WOOD HANGING ALTAR NICHE

USD 800 - 1,200

18th c. or earlier, painted gilt enhancements; domed top with finials, the niche (sans figure) with painted stars; pair of small doors below painted on the inside with the Virgin Mary, the other, an angel; original iron hanger 22"h; 11.5"w; 4.5"d NOTE: Apologies, we cannot approve bidders during the auction.



### 216: ITALIAN EMBOSSED BRASS HOLY WATER WALL FONT

USD 800 - 1,200

depicting the Holy Family; the water holder a copper shell; original mirror enhancements; mounted on wood; 14.5"h; 10.5"w NOTE: Apologies, we cannot approve bidders during the auction.



### 217: (on 3) EARLY ITALIAN MAJOLICA GROUP

USD 500 - 700

18th c. or earlier (2) small bowls, one a profile of woman with hair net on yellow ground, 5.5"diam; 2"h (restored, cracked in half); the other, portrait of crowned woman on pale ground; 7"diam.; 2"h (large cracks, two pieces glued together) along with an ITALIAN MAJOLICA TILE Parable of the Talents, a wealthy man giving money to three servants; 10.75" by 10" (broken and repaired) NOTE: Apologies, we cannot approve bidders during the auction.

## CRN ANNUAL FALL AUCTION



### 218: 17TH C. GERMAN CARVED WALNUT FRAME WITH SILVER RELIEF INSERTS

USD 800 - 1,200

the shield-form frame with floral and leaf carving with five chased silver inserts, each depicting religious images; the center plaque the Annunciation, Augsburg hallmark, 6"h, 5"w; surrounded by the Crucifixion 5"h, 3"w, the Descent from the Cross 3"h, 5"w; Saint Peter, the other Saint Paul, both 5"h 2"w; frame 32"h; 21"wNOTE: Apologies, we cannot approve bidders during the auction.



### 219: ITALIAN, 18/19th c. OIL / GILT FRAME

USD 1,500 - 2,000

after Carlo Dolci, 18th c.Madonna and Christ child/c; 36 by 26 in.; ornately carved, period gilt frame 45 by 38 in.frame opening 34 by 27 in.NOTE: Apologies, we cannot approve bidders during the auction.



### 220: NETHERLANDS, 17th c.

USD 2,000 - 2,500

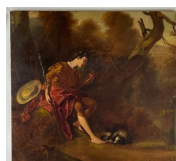
landscape with people and livestock near a lakeunsigned; 24 by 46 in.; poss. original gilt frame 32 by 54 in.NOTE: Apologies, we cannot approve bidders during the auction.



### 221: FRENCH, 19th c. CANVAS WALL MURAL

USD 800 - 1,200

in the manner of Francois Boucher (Paris, 1703-1770)shepherdess with sheep, playing a flute, sitting under a treeo/c (relined); 44 by 47 in.; securely stretched, unframedFrom the home of the consignor's great grandfather, Providence, RINOTE: Apologies, we cannot approve bidders during the auction.



### 222: FRENCH, 19th c. CANVAS WALL MURAL

USD 800 - 1,200

in the manner of Francois Boucher (Paris, 1703-1770)shepherd and dog, sitting under a treeo/c (relined); 44 by 48 in.; stretched, unframedFrom the home of the consignor's great grandfather, Providence, RINOTE: Apologies, we cannot approve bidders during the auction.



### 223: FRENCH, 19th c. CANVAS WALL MURAL

USD 800 - 1,200

in the manner of Francois Boucher (Paris, 1703-1770)man playing a luteo/c (relined)53 by 37 in.; stretched, unframedFrom the home of the consignor's great grandfather, Providence, RINOTE: Apologies, we cannot approve bidders during the auction.



### 224: (2) FRENCH, 19th c. ROLLED CANVAS WALL MURALS

USD 500 - 700

in the manner of Francois Boucher (Paris, 1703-1770)family gathering in a wooded landscape55 by 128 in.; rolled (damage to ends; )the other:group catching birds in a net54 by 121 in. (damage/splits to one end in landscape portion)From the home of the consignor's great grandfather, Providence, RINOTE: Apologies, we cannot approve bidders during the auction.

## CRN ANNUAL FALL AUCTION



**225: 19TH C. ITALIAN CARVED AND POLYCHROMED PUPPET HEAD**

USD 500 - 700

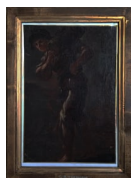
carved head of bearded man wearing a plumed copper helmet; connected to original sliding iron rod (head slides up on rod so that various bodies can be hung) head incl. hat 9"; rod 26"NOTE: Apologies, we cannot approve bidders during the auction.



**226: DUTCH PORTRAIT, 18th c.**

USD 1,000 - 1,500

portrait of gentleman wearing lace collar/c; 44 by 32.5 in; unframedNOTE: Apologies, we cannot approve bidders during the auction.



**227: school of GIOVANNI BATTISTA CARACCIOLO (Italy, 1578-1635)**

USD 600 - 800

called Battistello, follower of Caravaggiomale figure carrying wine casketunsigned; o/c; 14.5 by 10 in; framed 17 by 12 in.NOTE: Apologies, we cannot approve bidders during the auction.



**228: school of GIOVANNI TIEPOLO (Italy, 1696-1770)**

USD 700 - 900

sky figures in the clouds, falling crownso/c laid down on artist board20.75 by 8.75 in.; framed 27 by 15 in.Note of reverse: Fragment oil sketch for the ceiling fresco of the Church of San Felice.NOTE: Apologies, we cannot approve bidders during the auction.



**229: CONTINENTAL, 18th c.**

USD 500 - 700

group seated outside a taverno/p; 7.75 by 8.75 in.; later gilt frame 11.25 by 12.25 in.NOTE: Apologies, we cannot approve bidders during the auction.



**230: EDOARDO MATANIA (Italian/Naples, 1847-1929)**

USD 700 - 900

group of revelers, overlooking the Bay of Naplesgn. and dated l.l. Matania 1873o/c; 16 by 21 in; framed 185 by 23.5 in.NOTE: Apologies, we cannot approve bidders during the auction.



**231: AMERICAN, 19th c.**

USD 800 - 1,200

ships on a rough seaunsigned; o/c (relined)l 22 by 36 in.; gilt frame 29.5 by 44 in.NOTE: Apologies, we cannot approve bidders during the auction.



**232: CONSTANTIN STOILOFF (Russian Federation, 1850-1924)**

USD 300 - 500

Winter scene with figures, horses and wagonsgn. l.r. C. Stoiloff20 by 32.5 in.; framed 26.5 by 37.5 in. NOTE: Apologies, we cannot approve bidders during the auction.

## CRN ANNUAL FALL AUCTION



### 233: CHINESE BLUE AND WHITE ROUND GARDEN BARREL

USD 1,000 - 1,500

19th c., Fitzhugh pattern; applied raised bosses, pierced circles to sides and top; 19"h; top 13"diam.NOTE: Apologies, we cannot approve bidders during the auction.



### 233A: CHINESE HEXAGONAL PORCELAIN GARDEN BARREL

USD 1,000 - 1,500

19th c., overall blue Fitzhugh decoration; applied raised bosses, pierced circles to sides and top; 19"h; top 12"diam.NOTE: Apologies, we cannot approve bidders during the auction.



### 234: (on 19) CHINESE EXPORT PORCELAIN TEA SERVICE PIECES

USD 500 - 700

with figural and calligraphy decoration including: (5) plates, 8" (three with rim chips, one with hairline); a large footed teapot; a small teapot; a creamer; (4) small tea bowls (two with rim chips) with lids; (4) additional lids; and (3) under plates (one with a 1" piece missing at edge)NOTE: Apologies, we cannot approve bidders during the auction.



### 235: BACCARAT GLASS DECANTER SET IN BOOK-FORM CASE

USD 700 - 900

decanter 8"h, (6) glasses marked Baccarat France; contained in a hinged case consisting of (5) leather book spines with faux pages, 8.5"hNOTE: Apologies, we cannot approve bidders during the auction.



### 236: ITALIAN PSYCHE OF CAPUA MARBLE TORSO on MARBLE PEDESTAL

USD 500 - 700

Grand Tour, 19th c.; the torso 18.5"h; columnar pedestal 40"h; rotating top 8.5"sq.Descended through a Richmond, Virginia family to the present owners, Providence, RI.NOTE: Apologies, we cannot approve bidders during the auction.



### 237: GERMAN STEAM LAUNCH BOAT MODEL, KRICK

USD 500 - 800

Patriciaeearly 20th c.; on wood stand; 9"h; 37"l; 7"wKrick schematic poster instructions and paperwork on how to assemble the model.NOTE: Apologies, we cannot approve bidders during the auction.



### 238: (on 2) MARINE ITEMS: A SHIP'S BRASS AND WOOD TELESCOPE, HARRIS

USD 300 - 400

sgn. W. Harris/47 Holborn, London/Imp. Day or Night; single-draw; 20.5" when closed; 36" extended; along with a SHIP'S NAVIGATIONAL EBONY AND BRASS SEXTANT with bone scale to 105 degrees, in wood case (London paper label torn); 12" by 10" (bone maker's plate worn)NOTE: Apologies, we cannot approve bidders during the auction.

## CRN ANNUAL FALL AUCTION



**239: JOHN J. AUDUBON (American, 1785-1851) COLORED LITHOGRAPH**

USD 400 - 600

SCIURUS LEPORINUS, Aud & Bach/HARE SQUIRREL. / Natural Size/Plate XLIII / No. 9/Lith. Printed & Col by J.T. Brown, Philada 1844; under glass, matted, walnut frame 35 by 26 in. Descended through a Richmond, Virginia family to the present owners, Providence, RI. NOTE: Apologies, we cannot approve bidders during the auction.



**240: JOHN J. AUDUBON (American, 1785-1851) BIRD PRINT**

USD 300 - 400

Tawny Thrush, Male/Plate CLXIV / No. 33, Engraved, Printed & Colored by R. Havell, London 1833/25.5 by 17.25 in.; framed 27 by 19 in. NOTE: Apologies, we cannot approve bidders during the auction.



**241: SMALL NEW ENGLND QUEEN ANNE CHERRY DROP LEAF TABLE**

USD 500 - 700

27.5"h; 38"; 15"d; 16" oval drop leaves NOTE: Apologies, we cannot approve bidders during the auction.



**242: 18TH C. NEW ENGLAND CHIPPENDALE DRESSING TABLE**

USD 800 - 1,200

maple or cherry with mahogany wash.; long drawer over three; cabriole legs ending in ball and claw feet; 31.5"h; 31.5"w; 20.5"d NOTE: Apologies, we cannot approve bidders during the auction.



**243: LURISTAN BRONZE SWORD**

USD 800 - 1,200

30" NOTE: Apologies, we cannot approve bidders during the auction.



**244: 18TH C. SAMUEL MULLIKEN SALEM, MAHOGANY TALL CLOCK**

USD 1,000 - 1,500

S. Mulliken / Salem on painted dial, (Samuel Mulliken) 8-day with brass works; stop fluted quarter columns original painted dial 89"h; case 14"w NOTE: Apologies, we cannot approve bidders during the auction.



**245: AMERICAN STICK BAROMETER/THERMOMETER**

USD 500 - 700

c. 1800, Frye & Shaw, New York line inlay; applied urn to bottom; 39"h Descended through a Richmond, Virginia family to the present owners, Providence, RI. Purchased by grandmother in 1939 from Charles Navis, Richmond, Virginia NOTE: Apologies, we cannot approve bidders during the auction.

## CRN ANNUAL FALL AUCTION



### 246: ENGLISH STICK MAHOGANY BAROMETER/THERMOMETER

USD 400 - 600

J SMITH ROYAL EXCHANGE / LONDON, 40"INOTE: Apologies, we cannot approve bidders during the auction.

---



### 247: LARGE 19TH C. CHERRY BOWL

USD 500 - 700

26.6"diam.NOTE: Apologies, we cannot approve bidders during the auction.

---



### 248: NEW YORK HEPPLEWHITE INLAID MAHOGANY PEMBROKE TABLE

USD 800 - 1,200

old surface; oval drop leaves with line inlay; drawer to one end, false drawer to other end, original brasses; remnants of Brooklyn NY label; smaller than usual size; 28.5"h; 39"w; 29.5"dNOTE: Apologies, we cannot approve bidders during the auction.

---



### 249: AMERICAN NEEDLEWORK SAMPLER

USD 300 - 500

alphabet and poem; 12 by 16.5 in.; grain painted frame 15 by 20 in.While I am in my youthful Pride /May virtue be my constant guideAnd when my days of life are pastMay I arrive in heaven at last (she misspelled 'heaven' and corrected herself)NOTE: Apologies, we cannot approve bidders during the auction.

---



### 249A: BOSTON FEDERAL MAHOGANY AND SATINWOOD CARD TABLE

USD 400 - 600

serpentine top; tapering fluted legs;remains of paper label; 29.5"h; 36"w; 17.5"dNOTE: Apologies, we cannot approve bidders during the auction.

---



### 249B: SOUTHERN FEDERAL INLAID MAHOGANY SIDEBOARD

USD 500 - 700

Virginia, late 18th c., pine secondary woodDescended through a Richmond, Virginia family to the present owners, Providence, RI.NOTE: Apologies, we cannot approve bidders during the auction.

---



### 250: 14K GOLD ROPE TWIST CHAIN LARIAT NECKLACE

USD 8,000 - 10,000

14k chain, 44" (end to end) with gold tips; 14k gold clasp with initial M inset with small diamonds; total weight 208 grams; 133.6 dwt.NOTE: Apologies, we cannot approve bidders during the auction.

---



### 251: 14K LAPIS AND GOLD NECKLACE

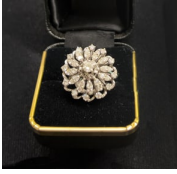
USD 700 - 900

fifty three lapis beads with fluted gold cylinders and gold bead spacers; unmarked but tested, 36"NOTE: Apologies, we cannot approve bidders during the auction.

---



## CRN ANNUAL FALL AUCTION



### 252: DIAMOND AND WHITE GOLD COCKTAIL RING

USD 500 - 600

Harold Freeman, marked EREV 14k size 6; flower-form having a round modern cut diamond weighing approx. .18 cts. centering a framework of diamond petals NOTE: Apologies, we cannot approve bidders during the auction.



### 253: CROTIN LADIES WRIST WATCH, 14K and DIAMONDS

USD 400 - 600

marked 14k, face surrounded by small round diamonds NOTE: Apologies, we cannot approve bidders during the auction.



### 254: 14K GOLD AND ONYX LIBRA PENDANT

USD 4,000 - 6,000

pendant marked 14K 5M; suspended on gold link chain (unmarked, but tested as 14k) from which pendant can be detached; pendant with gold scale set with six diamonds mounted on black onyx; gold initial M on reverse of pendant; link chain 29" long; pendant 2.25" diam.; total inclusive chain and pendant total 171.6 grams; 110.4 dwt. NOTE: Apologies, we cannot approve bidders during the auction.



### 255: 14K GOLD BRACELET

USD 1,800 - 2,200

marked 14k; total weight 55.7 grams; 35.9 dwt gold mesh loop and rope twist motif, NOTE: Apologies, we cannot approve bidders during the auction.



### 256: 14K GOLD KEEPSAKE HEART PENDANT

USD 500 - 600

chain and pendant marked 14k, heart-form slide-pendant having (4) diamond accents and framed with cultured pearls (one seed pearl missing). Heart hinged as a vinaigrette, on a rope twist 30" chain; total weight 24.7 grams; 15.9 dwt. NOTE: Apologies, we cannot approve bidders during the auction.



### 257: PAIR OF 14K GOLD CUFFLINKS

USD 400 - 600

marked A.B. 14k; mounted with oval shell cameo of classical profile of Etruscan warrior; total 17.6 grams; 11.2 dwt. total. NOTE: Apologies, we cannot approve bidders during the auction.



### 258: (on 7) JEWELRY LOT

USD 100 - 200

gold free-form ring, unmarked; along with a delicate marked 14k white gold chain, 18"; delicate marked 14k chain, 14" (knots); an unmarked rope-twist chain, 18"; and (3) agate/stone band-rings NOTE: Apologies, we cannot approve bidders during the auction.

## CRN ANNUAL FALL AUCTION



### 259: (on 5) GROUP OF MALACHITE JEWELRY

USD 300 - 500

a necklace, 22"; a bangle bracelet, 2.5" opening; pair of oval clip earrings; a ring; and a heart pendant  
NOTE: Apologies, we cannot approve bidders during the auction.



### 260: (on 9) LOT OF CAMEOS

USD 400 - 600

(7) oval pins of various sizes, the largest with gold frame inscribed on reverse NETTIE S. CATLETT, 2"; a small gold ring; and a pair of cufflinks  
NOTE: Apologies, we cannot approve bidders during the auction.



### 261: (on 8) JEWELRY LOT

USD 300 - 500

cocktail ring marked 14kt with center yellow gemstone; another cocktail ring with purple gemstone, unmarked; (2) antique gold baby rings with opals; (4) antique gold stickpins  
NOTE: Apologies, we cannot approve bidders during the auction.



### 262: (on 17) GROUP OF JEWELRY

USD 300 - 500

branch coral necklace, 15" and pair of matching clip earrings; ladies' enamel pendant watch, 1", on enamel chain, 24"; gold ladies watch; (3) antique bar pins; a small gold and pearl snowflake pendant; (6) gold tie pin; a jade cufflink, the other missing its stem; a small pill box; NOTE: Apologies, we cannot approve bidders during the auction.



### 263: PAIR OF 18TH C. CONTINENTAL WALNUT SIDE CHAIRS

USD 1,000 - 1,500

Italian or Portuguese, pierced, shaped crest and back splat: carving to seat rail and knees; ball and claw feet; upholstered slip seats; 43"h; 21"w; 17"d; 18" seat height  
NOTE: Apologies, we cannot approve bidders during the auction.



### 264: PAIR OF IRISH CLEAR GLASS DECANTERS

USD 200 - 300

cut swag and star decoration, sunburst stoppers; 11"  
NOTE: Apologies, we cannot approve bidders during the auction.



### 265: AUSTRIAN/VIENNESE ENAMEL, ORMOLU AND EBONIZED CASKET

USD 1,000 - 1,500

overall abundant enamel plaques depicting Greek figures and cherubs; the overhanging top of case surmounted by ormolu putto holding a mirror; each corner mounted with an ormolu dancing cherub, supported by four gilt caryatids; case with a pair of doors, the interior fitted with 3 drawers; 6.5"h; 6"w; 5.5"d  
NOTE: Apologies, we cannot approve bidders during the auction.

## CRN ANNUAL FALL AUCTION



### 266: VIENNESE ENAMEL ON SILVER OVAL CANDY DISH

USD 800 - 1,200

19th c., three-part; touch marks on the bottom rim of base, A and initials R.L.; side of dish with scalloped edge and masque decoration; the well with elaborate scene of mythological figures in clouds; dish sits in a frame with figural border which sits in a metal frame with enamel swags and hoofed legs applied to conforming shaped base with cherub border; 6"h; 7"w; 5.5"d NOTE: Apologies, we cannot approve bidders during the auction.



### 267: AUSTRIAN/VIENNESE ENAMEL ON SILVER FOOTED CANDY DISH

USD 600 - 800

19th c., oval-form, the flared sides decorated with various scenes of reveling folk; gilt over silver harpie handles; 2.5"h; 7"w; 4"d NOTE: Apologies, we cannot approve bidders during the auction.



### 268: FRENCH FIGURAL TEXTILE

USD 400 - 600

couple presenting offering to baby Christ and the Virgin Mary, surrounded by angles; mounted on stretcher; unlined; 57 in. by 71 in. NOTE: Apologies, we cannot approve bidders during the auction.



### 269: CONTEMPORARY JAPANESE WEDDING KIMONO/UCHIKAKI

USD 600 - 800

silver thread embroidery of cranes on red silk ground Consignor purchased while traveling in Japan in 1990. Uchikaki are worn over a white wedding kimono. NOTE: Apologies, we cannot approve bidders during the auction.



### 270: UNUSUAL JAPANESE MAN'S WWII KIMONO

USD 200 - 300

consisting of overall patchwork depicting the Japanese flag, weapons of war; lined. Estate of Albert Szabo, purchased in Japan. NOTE: Apologies, we cannot approve bidders during the auction.



### 271: 19TH C. GEORGE III-STYLE MAHOGANY TEA TABLE

USD 400 - 600

tray top; carved drop shell to apron; cabriole legs with carved sleeves ending in ball and claw feet; 28"h; 32"w; 21"d NOTE: Apologies, we cannot approve bidders during the auction.



### 272: FRENCH GILT BRONZE TRI-FOLD DRESSER MIRROR

USD 700 - 900

19th c., total of seven lithographed portraits; the uppermost of a French woman wearing a hat, flanked by cherub above a pair of doors, with four oval portraits of classical women, open to three beveled glass mirrors; picture-frame stand, 14"h; closed 10"w NOTE: Apologies, we cannot approve bidders during the auction.

## CRN ANNUAL FALL AUCTION



### 273: ENGLISH PUB WALL MIRROR

USD 200 - 300

applied beveled, acrylic letters COCKLES & MUSSELS / JELLIED EELS, wood frame; 31" by 21"NOTE: Apologies, we cannot approve bidders during the auction.



### 274: EARLY CARVED STONE BUDDHA HEAD FRAGMENT

USD 400 - 600

head measures 7.5"h, 5"w; mounted on wooden plinth, 13.5"h totalNOTE: Apologies, we cannot approve bidders during the auction.



### 275: LARGE PAIR OF 19TH C. FAMILLE VERTE VASES

USD 1,200 - 1,800

tapering rectangular form; overall decorated of landscape with people in boats and pavilions with figures; 26"h; 7"w; 7"dNOTE: Apologies, we cannot approve bidders during the auction.



### 276: JAPANESE BRONZE VASE

USD 500 - 700

late 19th c., with applied bird and iris; 17"hNOTE: Apologies, we cannot approve bidders during the auction.



### 277: JAPANESE BRONZE BUDDHA

USD 400 - 600

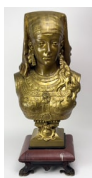
seated Shakymani Buddha in meditation pose; 10."h; 7"w at baseNOTE: Apologies, we cannot approve bidders during the auction.



### 278: JAPANESE BRONZE RITUAL EWER

USD 400 - 600

dragon handle; 6"h; 9"wNOTE: Apologies, we cannot approve bidders during the auction.



### 298: GILT BRONZE BUST OF EGYPTIAN WOMAN

USD 800 - 1,200

sgn. Z-Rimbez (French, late 19th/early 20th century) on right shouldermounted on red marble base with ormolu bronze feet; 27"h; 12"w; 9.5"wNOTE: Apologies, we cannot approve bidders during the auction.



### 299: FRENCH FIGURAL BRONZED AND MARBLE CLOCK

USD 500 - 700

female figure with bronzed patina, elbow resting on pillar with inset clock to pillar, ornamented with wreaths supported by lion head decoration on pillar's left side; face inscribed Paris; face and works inscribed Blot & Drouard; on black marble base; 28.5"h; 23"w; 10.5"dNOTE: Apologies, we cannot approve bidders during the auction.

## CRN ANNUAL FALL AUCTION



### 300: SHIEBLER STERLING SILVER HANDLED VASE

USD 1,500 - 2,000

marked Mermod & Jaccard Jewelry Co. (1898-1903) ornately chased with iris and acanthus leaf motifs around body and foot; lip of vase decorated with undulating curves; 11"h; 10"w; 7"d; 39.17 troy oz. NOTE: Apologies, we cannot approve bidders during the auction.



### 301: KIRK STERLING SILVER REPOSE PITCHER

USD 1,000 - 1,500

silver pitcher chased with mixed floral design across entire body and handle; marked S. Kirk & Son; 8"h; 7.5"w; 5"d; 19.645 troy oz. NOTE: Apologies, we cannot approve bidders during the auction.



### 302: PAIR OF GORHAM STERL

USD 600 - 900

6.5"h; 8"l; 5"d; 17.3 total troy oz. NOTE: Apologies, we cannot approve bidders during the auction.



### 303: TIFFANY STERLING SILVER FOOTED SALVER

USD 600 - 1,000

Tiffany & Co. Makers / 21743 and 7257 / 925/1000 Mround-form, scalloped edge, four scrolling feet; monogram; 1.5"h; 12" diam.; 34 troy oz. NOTE: Apologies, we cannot approve bidders during the auction.



### 304: PAIR OF CHASED STERLING CANDLESTICKS

USD 800 - 1,200

marked Bailey, Banks & Biddle / Sterling; 0360, Hand Chased 11.5"h; 35.5 troy oz. NOTE: Apologies, we cannot approve bidders during the auction.



### 305: MID-CEN. MODERN STERLING SILVER FLATWARE FOR 16, WALLACE, DISCOVERY

USD 4,000 - 5,000

Wallace Sterling; (16) of each: tablespoons (26.5 troy oz.); soup spoons (18.5); teaspoons (13.7); demitasse (7.4); salad forks (22.2); dinner knives; luncheon knives; butter spreader knives; butter knives; (32) dinner forks (57.4 troy oz.) all knives incl. stainless blades total 127.5 troy oz. Additional serving pieces: (4) serving spoons (11.7 troy oz.); (2) gravy ladles (4.6.); (2) condiment spoons (2.8); a serving fork (2.8); (3) pickle forks (1.9); (2) luncheon butter knives; carving knife and fork set Total not incl. knives 170 troy oz. This pattern was produced from 1957-1963, then discontinued. NOTE: Apologies, we cannot approve bidders during the auction.



### 306: (79) KIRK REPOUSSE STERLING SILVER PARTIAL FLATWARE SERVICE

USD 2,000 - 2,500

marked S. Kirk & Son, repousse floral pattern (10) dinner forks; (24) luncheon forks; (14) teaspoons; (4) ice tea spoons; (2) soup spoons; (9) butter knives; (9) dinner knives; (on 2) small lemon fork and knife; meat serving fork; small berry spoon; condiment spoon with shell bowl; (2) small pastry servers; total 78.82 troy oz. not incl. knives; knives with sterling handles 22.4 troy oz. NOTE: Apologies, we cannot approve bidders during the auction.

## CRN ANNUAL FALL AUCTION



### 307: TIFFANY STERLING SILVER CENTER PIECE

USD 800 - 1,200

marked Tiffany & Co. 7505 Makers 3649 Sterling / 925/1000 /T....rectangular footed, oval bowl with chased floral and leaf edge, ribbed pattern to bottom of body; acanthus feet; monogram; 3.5"h; 11"w; 7.25"d; 21 troy oz. NOTE: Apologies, we cannot approve bidders during the auction.



### 308: (on 6) STERLING SILVER TEA SERVICE, WALLACE

USD 800 - 1,200

teapot, hot water pot, covered sugar, creamer, and waste bowl, 61.5 troy oz.; along with a Wallace plated tea service tray Descended through a Richmond, Virginia family to the present owners, Providence, RI. NOTE: Apologies, we cannot approve bidders during the auction.



### 309: GORHAM STERLING FLATWARE, CHANTILLY

USD 1,500 - 2,500

(12) of each, dinner knives, dinner forks, teaspoons; (10) salad forks; (9) soup spoons; serving fork and two spoons; gravy ladle; condiment spoon; butter knife and pie server (sterling handles) 78.8 troy oz. not incl. knives, pie server and butter knife, in flatware case also (8) plate napkin rings NOTE: Apologies, we cannot approve bidders during the auction.



### 310: REED AND BARTON STERLING SILVER FLATWARE, BURGUNDY

USD 2,500 - 3,500

120 pieces total; complete setting for 12, with extra pieces (13) dinner forks; (13) salad forks; (15) shrimp cocktail forks; (4) oyster forks; (30) teaspoons; (13) soup spoons; (17) dinner knives; (6) butter knives; (2) master butter knives; a gravy ladle; serving spoon; (2) pierced bowl bon bon spoons; (2) solid jelly servers; a condiment spoon with shell-form bowl 125 troy oz. not incl. knives NOTE: Apologies, we cannot approve bidders during the auction.



### 311: 18TH C. ENGLISH SILVER TANKARD

USD 1,500 - 2,000

John Swift (London, 1728-1760) domed hinge lid on round step-molded foot; handle decorated with heart shaped accent near bottom of body; monogram reads Randall Clifford from his grandfather, C.S. Randall, May 12th 1889; marked J.S at bottom of base and interior of lid; dated 1774 at base bottom; 8"h; 7"w, 4.25"d Provenance: purchased from the South Dartmouth estate of Mary Irwin Stedman, widow of William E. Stedman (d. 1993), direct descendant of Founding Father, William Ellery. Randall Clifford was the grandson of John H. Clifford (1809-1876), American lawyer and 21st governor of Massachusetts, serving 1853-1854. John H. Clifford is well known for leading the prosecution for the Parkman-Webster murder case, the first legal instance by which forensic dentistry was used for a conviction. Charles Sturtevant (C.S.) Randall was Randall Clifford's maternal grandfather. NOTE: Apologies, we cannot approve bidders during the auction.



### 311A: 18TH C. IRISH SILVER FOOTED, HANDLED CHALICE

USD 800 - 1,200

John Warner, Dublin, apprenticed to William Reynolds late 18th c., worn hallmarks to exterior at rim IW...?; gilt washed interior; scrolling double handles; 5.25"h; 15 troy oz. NOTE: Apologies, we cannot approve bidders during the auction.



### 312: HESTER BATEMAN SILVER TEA POT

USD 500 - 700

hallmarked; oval-form tea pot chased with delicate floral design along top and bottom rim of body and oval frame design; hinge lid accented with wooden finial and chased border along edge; complete with wooden handle 6.5"h; 11"w; 4"d; 14 troy oz. including handle NOTE: Apologies, we cannot approve bidders during the auction.



## CRN ANNUAL FALL AUCTION



### 313: SMALL ENGLISH GEORGE III SILVER SALVER, HESTER BATEMAN

USD 700 - 900

c. 1781, hallmarked, shaped, beaded and floral edge, ball and claw feet; 1" h; 7" diam.; 7.4 troy oz. NOTE: Apologies, we cannot approve bidders during the auction.



### 314: PAIR OF SMALL ENGLISH SILVER CANDLESTICKS

USD 500 - 700

hallmarks for Charles Stuart Harris London 1907-8; 6" h; 16.6 troy oz. NOTE: Apologies, we cannot approve bidders during the auction.



### 315: (62) KIRK STERLING FLATWARE FOR 12, GOLD SELENE

USD 2,000 - 3,000

S. Kirk & Son (12 of each) dinner forks; salad forks; teaspoons; tablespoons, a salad set, 79.3 troy oz. total not incl.; (11) knives with sterling handles; (1) butter spreader; in wood and leather case NOTE: Apologies, we cannot approve bidders during the auction.



### 316: (78) STERLING SILVER PARTIAL FLATWARE SET, FIDDLE SHELL

USD 1,500 - 2,500

F.W. Smith Silver Co., Gardner, MA (1886-1958) (10) dinner forks; (10) dessert forks, (11) soup spoons; (15) teaspoons; (3) tablespoons; (8) shrimp cocktail forks; (3) butter knives; (1) master butter knife; (1) slotted serving spoon; (1) meat fork; (1) ladle; a small condiment fork; 88 troy oz. total, not incl. the following with sterling handles: (10) dinner knives; a pastry server; a carving knife and fork set, weighing 32 troy oz. Descended through a Richmond, Virginia family to the present owners, Providence, RI. Silversmith Arthur Stone was an early designer for Smith silver. NOTE: Apologies, we cannot approve bidders during the auction.



### 317: (on 22) GEORG JENSEN STERLING FLATWARE, ACANTHUS

USD 1,000 - 1,500

marked Georg Jensen / Sterling DENMARK (2) serving spoons; (12) grapefruit spoons; (1) salad fork; (2) oversized knives blades sterling; along with a similar pattern (2) fish servers; and a pie server; 32.4 troy oz. not incl. pie server NOTE: Apologies, we cannot approve bidders during the auction.



### 318: ( on 33) GEORGE JENSEN STERLING SILVER FLATWARE, ACORN PATTERN

USD 800 - 1,200

(12) desert forks, (14) teaspoons, (1) baby spoon, (2) bouillon spoons, 31.5 troy oz. (not incl. the following with sterling handles only, a matching cheese slicer; a cheese knife; and Cactus pattern pastry server and cake knife NOTE: Apologies, we cannot approve bidders during the auction.



### 319: GORHAM STERLING FLATWARE FOR (8), KING EDWARD PATTERN

USD 2,000 - 3,000

(53) total pieces incl. (8) knives, dinner forks, soup spoons, salad forks; (16) teaspoons; (2) small butter knives; fork and spoon salad set; pierced pea server, 58.34 troy oz. not incl. knives NOTE: Apologies, we cannot approve bidders during the auction.

## CRN ANNUAL FALL AUCTION



### 320: (on 9) GROUP OF VARIOUS STERLING SILVER TABLEWARE incl. TIFFANY

USD 400 - 600

Tiffany & Co., Paul Revere bowl, 20024, 3.5"h, 6"diam. (12 troy oz.); a small lotus-form plate, 25222, 6"diam. (5.5 troy oz.); (5) shell pattern salad forks (9.7 troy oz.); along with an Arts and Crafts Hand wrought/Sterling lobed bowl, 3"h, 5.5"diam.; and footed shot glass, 2.5"; 36 troy oz. total NOTE: Apologies, we cannot approve bidders during the auction.



### 321: (on 4) VARIOUS STERLING SILVER SERVING PIECES

USD 400 - 600

Tiffany & Co./ Sterling/ M/4 4 grape shears with pierced vine pattern, monogram, 6.5"; Gorham shell pattern serving spoon with gilt washed bowl, 9"; Theodore B. Starr, NY, Gorham cake knife, 11.5" (last quarter of 19th c. Gorham mark); 925 Mexican, Jensen-style pie server; total 18 oz troy totalNOTE: Apologies, we cannot approve bidders during the auction.



### 322: PAIR OF MID-CENTURY MODERN STERLING SILVER TAZZA, DeMATTEO

USD 1,200 - 1,500

c. 1950, William De Matteo, Jensen-style for the New York store6"h; 6.75" diam.; 27 troy oz. During WW II, the Danish retailer of Jensen silver, Frederik Lunning, commissioned de Matteo and Alphonse LaPaglia to make pieces in the style of Georg Jensen to sell in his Georg Jensen USA store on 5th Ave. in New York City. The designs were not exact copies of Jensen pieces but were close enough that an ordinary consumer might not have detected a difference. Eventually, a lawsuit ensued, and as a result, the New York shop discontinued its production. The quality of these Jensen-style designs and workmanship is equal to the Danish products and being rarer, they are highly collectable.NOTE: Apologies, we cannot approve bidders during the auction.



### 323: (on 17) GROUP OF VARIOUS PLATED SILVER/SILVER

USD 300 - 500

pair of Sheffield bottle coasters with ornate grape and floral, 2.5"h; 6"diam.; ; another pair of bottle coasters, 2"h; 7"diam., both with turned wood interiors; a hallmarked calling card salver with grape vine edge, 7"diam. ; (2) serving spoon; (9) small fruit knives with sterling bands on mother-of-pearl handles, 6"along with a small hallmarked footed creamer; and (2) silver hallmarked serving spoons NOTE: Apologies, we cannot approve bidders during the auction.



### 324: (on 18) GROUP OF VARIOUS STERLING SILVER

USD 400 - 600

gravy boat with undertray (tray marked sterling); (6) small plates/undertrays, International; (2) butter pat dishes, 3"; oval, pierced, handled candy dish, 7"w; pin tray; pair of flame candelabra finials; 77 total troy oz.; along with a small weighted sugar and creamer, (2) small footed urns, 3.6" and 3" (not weighed)NOTE: Apologies, we cannot approve bidders during the auction.



### 325: (41) GROUP OF VARIOUS STERLING SILVER FLATWARE

USD 300 - 500

(6) matching Louis XV pattern forks, (2) tablespoons, and small sugar tongs; along with a small Stieff pickle fork, a small meat fork, a teaspoon and small ladle; pair of pierced candy dishes, 4.5"; pair of pierced, handled candy baskets, 5"; (10) matching salt spoons; (10) various little spoons; (3) Porter Blanchard serving spoons; little sugar tongs; ;l 33.8 troy oz. totalNOTE: Apologies, we cannot approve bidders during the auction.



### 326: (on 29) GROUP OF STERLING AND PLATED LITTLE SPOONS

USD 50 - 75

mostly souvenir spoons, approx. (9) sterling; the rest plated; along with a small Kirk sterling letter openerNOTE: Apologies, we cannot approve bidders during the auction.

## CRN ANNUAL FALL AUCTION



### 327: CAUCASIAN PRAYER RUG

USD 800 - 1,200

3'4" x 4'9"NOTE: Apologies, we cannot approve bidders during the auction.

---



### 328: ANTIQUE KUBA RUG

USD 1,000 - 1,500

fine knots; 3'11" x 5'11"NOTE: Apologies, we cannot approve bidders during the auction.

---



### 329: EAGLE KAZAK RUG

USD 1,500 - 2,000

4' x 8'1"NOTE: Apologies, we cannot approve bidders during the auction.

---



### 330: ANTIQUE HERIZ ROOMSIZE RUG

USD 800 - 1,200

8'2" x 11'9"There will be approximately 20 carpets to be posted soon.NOTE: Apologies, we cannot approve bidders during the auction.

---



### 331: SAROUK RUG

USD 500 - 700

4'5" x 7'NOTE: Apologies, we cannot approve bidders during the auction.

---



### 332: BIDJAR LIBRARY RUG

USD 800 - 1,200

overall design on ivory field, 6'8" x 10'NOTE: Apologies, we cannot approve bidders during the auction.

---



### 333: ANTIQUE SERAB CAMEL HAIR RUNNER CARPET

USD 1,000 - 1,500

3 ft. 3 in. x 15 ft. 4 in.NOTE: Apologies, we cannot approve bidders during the auction.

---



### 334: HERIZ RUG

USD 300 - 500

4'8" x 6'8"NOTE: Apologies, we cannot approve bidders during the auction.

---

## CRN ANNUAL FALL AUCTION



**335: DOUBLE BAGFACE RUG**

USD 300 - 500

1'10" x 4'5"

---



**336: KASHAN RUG**

USD 800 - 1,200

4'4" x 7'2"NOTE: Apologies, we cannot approve bidders during the auction.

---



**337: ANTIQUE LAVAR KIRMAN RUG**

USD 500 - 800

3'6" x 5'11"NOTE: Apologies, we cannot approve bidders during the auction.

---



**338: BAKHTIARI RUG**

USD 500 - 800

5'6" x 9'9"NOTE: Apologies, we cannot approve bidders during the auction.

---



**339: CAUCASIAN RUG**

USD 200 - 300

4'2" x 6'2"NOTE: Apologies, we cannot approve bidders during the auction.

---



**340: KASHAN CARPET**

USD 700 - 900

4'4" x 6'8"NOTE: Apologies, we cannot approve bidders during the auction.

---



**341: ANTIQUE LION BIDJAR RUG**

USD 700 - 900

4'6" x 7'NOTE: Apologies, we cannot approve bidders during the auction.

---



**342: ROOMSIZE NICHOLS ART DECO RUG**

USD 400 - 600

green and rose color; bat and floral design; 9'8" x 10'4"NOTE: Apologies, we cannot approve bidders during the auction.

---

## ***CRN ANNUAL FALL AUCTION***



### **343: BOKHARA ROOMSIZE CARPET**

USD 400 - 600

8' x 10'4"NOTE: Apologies, we cannot approve bidders during the auction.

---



### **344: CAUCASIAN SCATTER RUG**

USD 200 - 300

1950's, 5'4" x 7'NOTE: Apologies, we cannot approve bidders during the auction.

---