

CRN Auctions, Inc.



THE AMERICANA COLLECTION OF G. W. SAMAHA

Sunday - June 19, 2022

THE AMERICANA COLLECTION OF G. W. SAMAHA



1: CONNECTICUT CHIPPENDALE CHERRY BLOCK-FRONT CHEST

USD 20,000 - 30,000

untouched surface, molded top, four graduated drawers, bold ogee feet; 32"h; case 32"w; 19"d; top 35.75"wCollection of G.W. SamahaNOTE: Apologies, we cannot approve bidders during the auction.



2: 18TH C. QUEEN ANNE MIRROR

USD 600 - 800

old surface, shaped crest with gilded pierced floral medallion and gilt border, 2 panels with original glass bordered with gilt edge; 40"h; 16.5"wNOTE: Apologies, we cannot approve bidders during the auction.



3: MARQUETRY INLAID CUTLERY BOX

USD 500 - 700

shaped divider with mortised handle and diamond cut-out, banded inlay; 14.25" w; 10.25" d; 5"hNOTE: Apologies, we cannot approve bidders during the auction.



4: MASSACHUSETTS INLAID MAHOGANY SHELF CLOCK, DAVID WOOD

USD 4,000 - 6,000

c. 1810, signed on dial David Wood, Newburyport, dial painted with man fishing by a stream; ornate line and geometric inlay, original brass side handles and finials; with weight, key and pendulum; 32.5"h (not incl. 2" finial); 12"w; 5.5"dCollection of G.W. SamahaNOTE: Apologies, we cannot approve bidders during the auction.



5: MASSACHUSETTS WEIGHT-DRIVEN WALL CLOCK, TABER

USD 2,500 - 3,500

c. 1805, Elnathan Taber, Roxbury, Massachusetts etched on plate inside Made by E. Taber, Roxbury, Massachusettsdial signed, worn not legible, mahogany cased; 32" h; 8.5"w; 4"dCollection of G.W. SamahaNOTE: Apologies, we cannot approve bidders during the auction.



6: FEDERAL WEIGHT-DRIVEN EGLOMISE BANJO CLOCK

USD 1,500 - 2,000

white painted dial; the painted throat flanked by brass tendrils; over box with eglomise painted door depicting naval battle between American and British ships; original gilding, 38"h incl. gilded acorn finial; 10.5"w; 4"dCollection of G.W. SamahaNOTE: Apologies, we cannot approve bidders during the auction.



7: RARE SCOTTISH STICK BAROMETER, ADIE & SON, EDINBURGH

USD 1,000 - 1,500

mahogany cased, inscribed D McGregor/ Agent / Glasgow & Greenock, brass slide on side; 24"h; 3"w; 2"dCollection G.W. Samaha Adie & son was a partnership between the renowned instrument maker Alexander Adie and his son John. They held a Royal warrant as Opticians to William IV and Queen Victoria. They were they only father and son to be elected as Fellows of the Royal Society of Edinburgh.NOTE: Apologies, we cannot approve bidders during the auction.

THE AMERICANA COLLECTION OF G. W. SAMAHA



8: NEW ENGLAND QUEEN ANNE BONNET-TOP HIGHBOY

USD 5,000 - 7,000

the upper case with molded full broken-arch, three short drawers over four graduated drawers; the lower case with one long over three short drawers, the center drawer with fan carving; original brass; shaped skirt with acorn drops; cabriole legs ending in pad feet, 84"h; 39"w; 25"dCollection of G.W. SamahaNOTE: Apologies, we cannot approve bidders during the auction.



9: NEW ENGLAND QUEEN ANNE MAPLE LOWBOY

USD 3,000 - 5,000

molded over-hanging top, one over three drawers with original brass, center drawer with fan carving; cabriole legs ending in pad feet, 31.5"h; case 28.5"w; 18"d; top 34"w, 22.5"dCollection of G.W. SamahaNOTE: Apologies, we cannot approve bidders during the auction.



10: NEW ENGLAND QUEEN ANNE MAHOGANY TEA TABLE

USD 3,000 - 5,000

molded edge top with 3" overhang, drawer to apron with original brass; 30"w; 19"d; 28"hCollection of G.W. SamahaNOTE: Apologies, we cannot approve bidders during the auction.



11: 19TH C. PAINTED CAST IRON MECHANICAL BANK, NOVELTY BANK

USD 700 - 900

J & E Stevens, original paint, stamped with date of US patent, 10/28/1873; 7"h; 4.75"sq.Collection of G.W. SamahaNOTE: Apologies, we cannot approve bidders during the auction.



11A: (2) BOOKS - ANTIQUE MECHANICAL TOY BANKS, PENNY LANE

USD 30 - 40

Al Davidson, pub Long's Americana, 1987, hardcover; along with, David Pressland, The Art of the Tin Toy, Crown, NY, 1976, hardcover. Library of G.W. Samaha



12: CAST IRON OPTOMETRIST/ OCULUS TRADE SIGN

USD 800 - 1,200

19th c., with painted and gilded decoration, 18"w; 6.5"hCollection of G.W. SamahaNOTE: Apologies, we cannot approve bidders during the auction.



13: PAINTED WOOD SIGN, STOP. .. GO NO FURTHER

USD 300 - 500

the reverse reads Sitha / what big prize, with forged iron bracket; 24.5"w; 4.75"hCollection of G.W. SamahaNOTE: Apologies, we cannot approve bidders during the auction.

THE AMERICANA COLLECTION OF G. W. SAMAHA



14: 18TH C. NEW ENGLAND PAINTED PINE SHELF

USD 800 - 1,200

three shelves, remnants of original old red paint; 43.75" h; 46"w; 16"dCollection G.W. SamahaNOTE: Apologies, we cannot approve bidders during the auction.



15: OVERSIZED MERGANSER DRAKE DECOY, ROSS

USD 2,000 - 3,000

Willie Ross, carver (Chebeague Island, Maine 1878-1954)with painted decoration, 26"long This model of decoy was selected for a two-page spread in John Dinan's Maine chapter of "The Great Book of Wildfowl Decoys." The caption reads, "Merganser by Willie Ross"Collection of G.W. SamahaNOTE: Apologies, we cannot approve bidders during the auction.



16: PAIR OF MINIATURE MALLARD DECOYS, GILLEY (Maine, 1904-1983)

USD 400 - 600

sgn. by W.H. Gilley/Mallard, 8.5"tall; and a female, sgn. by W.H. Gilley/Mallard (female), 8"tallCollection of G.W. SamahaNOTE: Apologies, we cannot approve bidders during the auction.



17: (on 6) 19TH C. PAINTED CANVAS-COVERED DUCK DECOY

USD 400 - 600

exposed wood head and tail, sgn. in pencil Clinton Keith/ Kingston Mass; 10.5"h; 21"long; along with; a blue winged teal drake; 12"; an early painted decoy, sans head; 14"; a duck head sans body; 7"h; a narrow full-bodied duck; 13"l.; and a black painted decoy; 15"NOTE: Apologies, we cannot approve bidders during the auction.



17A: (on 3) 20TH C. PAINTED DUCK DECOYS

USD 300 - 500

PINTAIL DUCK sgn. and incised H.V. SHOURDS 1981, also sgn. in pen, glass eyes, 16"; 6"; along with a PAIR OF MINIATURE DUCK DECOYS both sgn. Richard Watson/Fair Haven, Mich./"78"; 7.5"; 3.5"h NOTE: Apologies, we cannot approve bidders during the auction.



18: BOSTON CHIPPENDALE MAHOGANY OX-BOW CHEST

USD 30,000 - 50,000

c. 1770, untouched condition with original brasses and surface; blocked ends, ball and claw feet with scrolled knees; 32.25"h; case 33"w, 22"d; top 38.5"wCollection of G.W. SamahaSold at Sotheby's Important Americana, New York, January 18 & 19, 2008, lot #306Collection of G.W. SamahaNOTE: Apologies, we cannot approve bidders during the auction.



19: THE WHITE FAMILY CHIPPENDALE BRASS ANDIRONS

USD 2,000 - 3,000

attrib. Revere and Son, Boston, 1785-1810faceted ball and spiral flame finials, faceted shaft on ball and claw feet; inscription on front panels PEREGRINE WHITE / FIRST WHITE CHILD BORN / IN PLYMOUTH MASS / HIS ANDIRONS, 25"hCollection of G.W. Samaha Peregrine White (c. November 20, 1620 ? July 20, 1704) was the first baby boy born on the Pilgrim ship Mayflower in the harbor of Massachusetts. He was one of two babies born on the Mayflower's historic voyage, and the first known English child born to the Pilgrims in America.NOTE: Apologies, we cannot approve bidders during the auction.

THE AMERICANA COLLECTION OF G. W. SAMAHA



20: DIMINUTIVE BOSTON/SALEM MAHOGANY CHIPPENDALE TABLE

USD 3,000 - 5,000

oval drop leaves, finely carved ball and claw feet with cutout skirt; 26.75"h; 36"w; 13"d; when open 36"diam. Collection of G.W. Samaha NOTE: Apologies, we cannot approve bidders during the auction.



21: SET OF (3) 18TH C. NEW ENGLAND FAMILY TREE WATERCOLORS

USD 1,200 - 1,800

BUTLER/PERKINS/LOWE the first: the origin starts with Elisabeth Butler..1719 married 1737 Isaac Perkins...1707; thirteen additional members ascend up the tree ranging from 1739 to 1764; the other's origin starts with Sarah Perkins...1711 married 1734 Jonathan Lowe...1708; sixteen additional members ascend up the tree from 1732 to 1759, each image 22.5 by 11.5 in.; mounted, framed under glass 27.5 by 16.5 in. the third from Sarah Perkins (b. 1754) married 1776 to Jonathan Lowe (b. 1748) ascends eleven branches to Susan (b. 1798); paper measures 18 by 12 in.; framed under glass 23 by 16.5" NOTE: Apologies, we cannot approve bidders during the auction.



22: (on 3) 19TH C. SAILOR'S WHALEBONE CARPENTRY TOOLS

USD 1,000 - 1,500

a small saw, 11.5" (cracks and two chips in handle; and (2) planes, 9.5" and 6" Collection of G.W. Samaha NOTE: Apologies, we cannot approve bidders during the auction.



23: SAILORS OVAL WHALEBONE DITTY BOX WITH CARVED LID

USD 1,500 - 2,500

exotic wood oval lid with carved fluted pinwheel with monogram mother-of-pearl button PRB, and chip carved border; 6"h; 11"w; 8"d Collection of G.W. Samaha NOTE: Apologies, we cannot approve bidders during the auction.



24: 19TH C. PAINTED HALF HULL, LIZZIE WILLIAMS

USD 1,500 - 2,000

label on reverse Bank Lizzie Williams / Bank off Kodiak Island / April 22, 1889; board 44" by 8" Collection of G.W. Samaha NOTE: Apologies, we cannot approve bidders during the auction.



25: LARGE 19TH C. PAINTED HALF HULL

USD 800 - 1,200

36" by 8.5"; mounted on board 42" by 15.5" Collection of G.W. Samaha NOTE: Apologies, we cannot approve bidders during the auction.



26: (2) WHALEBONE- HANDLED, INLAID ROLLING PINS

USD 1,000 - 1,500

19th c., the larger with diamond, line and swag inlay, 15" (inlaid buttons in knob missing; chip at base of both handles); the other roller with inlaid diamond design, handle with bone rings and inlaid shell disc in end of knob, 13" (tight age crack in bone); 13" Collection of G.W. Samaha NOTE: Apologies, we cannot approve bidders during the auction.

THE AMERICANA COLLECTION OF G. W. SAMAHA



27: (3) 19TH C. WHALEBONE AND EXOTIC WOOD ROLLING PINS

USD 800 - 1,200

the first with inlaid whalebone horizontal bands in the roller (one missing) which evenly mark size of what's being rolled, 16.5" (sizeable chips at base of one whalebone handle); the third, 14.5"; the fourth, 19.5" (chip on base of each handle; age appropriate age cracks in bone)Collection of G.W. Samaha.NOTE: Apologies, we cannot approve bidders during the auction.



28: AMERICAN WATERCOLOR DOUBLE PORTRAIT

USD 2,500 - 3,500

c. 1815, gilt lettering in black mat By Abigail Eliza Beaumont with a standing woman, on the left in a field being plowed with sheep and doves, a village beyond the bay in distance; the other woman standing near a beehive holding a cornucopia with workers in a field behind her; the double watercolors (not incl. eglomise mat) 13 by 20.5 in.; later frame 20 by 27 in.Collection of G.W. SamahaNOTE: Apologies, we cannot approve bidders during the auction.



29: SCHOOLGIRL'S FRAMED PENWORK DRAWING

USD 800 - 1,200

pen and pencil portrait with foliate design and religious quotes, signed by Sarah Zimmerman; 10 by 8 in.; framed 14.75 by 12.75 in. Samaha Antiques sticker on reverse; Ex collection of Arthur J Sussel; Mildred Samaha; Geo. W. Samaha; pictured in Shelley's book; dated and initialed, 3/30/74; GWSNOTE: Apologies, we cannot approve bidders during the auction.



30: PAIR OF MINIATURE WATERCOLOR PORTRAITS, THOMAS EDWARDS

USD 800 - 1,200

c. 1740, signed Thomas Edwards (American, 1795-1869) profile portraits of Mister and Mrs. Joseph W. Jenkins, Boston, MassachusettsWritten on backboard of gentleman: T. Edwards Pinx/73 Market St./Boston/Feby 28. 1825; on backboard of lady Mrs: Edwards/1830; sitters also identified in pencil script on frames; black and gold reverse painted surrounds, original gilt frames (oval portraits 3.5 by 2.5 in.); frames 6 by 5 in.Collection of G.W. SamahaLandry Auctioneers, Essex, Massachusetts; incl. Robert Landry's extensive biographical Jenkin's research.NOTE: Apologies, we cannot approve bidders during the auction.



31: AMERICAN MINIATURE WATERCOLOR PORTRAIT

USD 300 - 400

c. 1810, seated young woman in a blue dress, original frame, 3.25"diam.Collection of G.W. SamahaNOTE: Apologies, we cannot approve bidders during the auction.



32: PAIR OF 18TH C. AMERICAN MINIATURE PORTRAIT WATERCOLORS

USD 400 - 500

Nancy L. Miller and husband, reverse painted mats; portrait ovals 3.25 by 2.5 in.; original gilt frames 5 by 4 in.Collection of G.W. SamahaNOTE: Apologies, we cannot approve bidders during the auction.



33: NEW HAMPSHIRE CHIPPENDALE TALL CASED CLOCK, CHANDLER & WARD

USD 4,000 - 6,000

dial signed Chandler & Ward / Concord; paper label on interior of case Made by Moses Hazzen, Joiner & Cabinet Maker, New Hampshirepierced fret, original brass steeple finials; painted moon-phase dial; inlaid pin wheel to base; back of moon dial is engraved Osborn's/Manufactory/Birmingham, 90.5"h incl. 6" finial; 19"w; 9.5"d (no weights, or key)Collection of G.W. Samaha Restorer's 2002 note: stating that the clock has been "cleaned...oiled...pivots polished..thirteen bushings installed at the worn pivot holes...verge pallets polished...rack spring repaired using the original parts...etc...Everything on this clock movement looks to be correct and original. The dial especially, is bright and clean with little or no wear to the detail...The bottoms of both plates are arched in typical New Hampshire style..."NOTE: Apologies, we cannot approve bidders during the auction.

THE AMERICANA COLLECTION OF G. W. SAMAHA



34: MASSACHUSETTS FEDERAL GILDED LYRE WALL CLOCK, GATES

USD 2,500 - 3,500

Zacheus Gates, Charlestown, Ma. c. 1820 weight-driven, written on painted iron dial in script Warranted by Z. Gates, Charlestown carved giltwood feather finial and dial surround; carved giltwood lyre fronts; 35"h (not including 5" finial); 12"w; 5.5"d Collection of G.W. Samaha NOTE: Apologies, we cannot approve bidders during the auction.



35: INLAID MAHOGANY CASED SHELF CLOCK

USD 800 - 1,200

unsigned, domed-top, hand-painted face, weight driven, applied columnar detail to case; on bracket feet with shaped apron; 36" (inc. 2" finial); 10.5"w; 6"d Collection of G.W. Samaha NOTE: Apologies, we cannot approve bidders during the auction.



36: NEW ENGLAND MAHOGANY WALL CLOCK

USD 300 - 500

c. 1840, broken arch crest above reverse painted tablet opening to painted iron dial with Roman numerals; above door with original mirror; 32"h; 14"w; 4"d Collection of G.W. Samaha NOTE: Apologies, we cannot approve bidders during the auction.



37: PAINT DECORATED TALL CASED CLOCK, BALCH

USD 3,000 - 5,000

brass dial signed Daniel Balch / Newbury (1734-1790) shaped skirt with painted pin wheel, applied bracket foot, 81" tall; waist 14"w; 7"d; base 17"w; 9"d; with weights, key and pendulum Collection of G.W. Samaha NOTE: Apologies, we cannot approve bidders during the auction.



38: MINIATURE CARVED PENNSYLVANIA TABLETOP CUPBOARD

USD 1,200 - 1,500

glazed door, ball feet with carved and painted decoration 16.5"h; 10.5"w, case; 13.75"h; 7"w, top NOTE: Apologies, we cannot approve bidders during the auction.



39: 18TH C. AMERICAN GREEN PAINTED WALL BOX

USD 800 - 1,200

old paint, lift-up lid, 17"h; 12"w; 7"d Collection of G.W. Samaha NOTE: Apologies, we cannot approve bidders during the auction.



40: RARE NEW ENGLAND PILGRIM CENTURY PAINTED CANDLESTAND

USD 6,000 - 8,000

c. 1680, in original color with scrubbed top; 23.5"h; 16"diam. Collection of G.W. Samaha NOTE: Apologies, we cannot approve bidders during the auction.

THE AMERICANA COLLECTION OF G. W. SAMAHA



41: EARLY SQUARE QUILT, FRAMED

USD 500 - 700

several signatures; central star decoration with graduated color, figural floral design and geometric border, in muted pastel palette; 54 by 50 in. ; framed under glass, 60 x 58 in. Collection of G.W. Samaha NOTE: Apologies, we cannot approve bidders during the auction.



42: 18TH C. CHILD'S PINE POTTY CHAIR IN ORIGINAL RED PAINT

USD 700 - 900

old surface, double-domed crest with heart and triangle cut-outs; shaped arms, on bracket base with shaped apron to all 4 sides; 25"h; 12"w; 11"d Collection of G.W. Samaha NOTE: Apologies, we cannot approve bidders during the auction.



43: 18TH C. PINE HUTCH TABLE IN RED PAINT

USD 1,500 - 2,000

shoe-foot with shaped arch base, 4-board rustic pine top; lidded compartment in chair, original pin; 27.75"h; top 41"diam.; 50"h when top in raised position Collection of G.W. Samaha NOTE: Apologies, we cannot approve bidders during the auction.



44: NEW ENGLAND PAINT DECORATED BOW-FRONT CHEST

USD 4,000 - 6,000

poss. Portsmouth, New Hampshire the four drawers sponge painted with red bullseye pattern; rare original alligator embossed oval brass; faux-tiger maple paint to top and sides, Maker's name (illegible) and date in script on backboards, C...September 28, 1810; 34.5"h; case 40"w; 21"d Collection of G.W. Samaha NOTE: Apologies, we cannot approve bidders during the auction.



45: NEW ENGLAND QUEEN ANNE DROP-LEAF TABLE IN RED PAINT

USD 1,500 - 2,000

maple with old red wash, scalloped apron, tapering legs ending in pad feet; metal casters added (which has preserved the pads); 43"w; 27.5"h; 15.5"d; drop leaf 14" Collection of G.W. Samaha NOTE: Apologies, we cannot approve bidders during the auction.



46: WILLIAM KAULA (American, 1871-1953)

USD 3,000 - 5,000

panoramic triptych of New Hampshire landscape, mountains in distance middle panel sgn. l.r. William J. Kaula; o/c; each side panel 24 by 15 in.; center panel 24 by 29 in.; gilt frame 28 by 65 in. Label on reverse: Artist: William J. Kaula, Fenway Studios, Boston Title: 3-Panel Landscape/ Agent: The Guild of Boston Artists Collection of G.W. Samaha NOTE: Apologies, we cannot approve bidders during the auction.



47: WILLIAM J. KAULA (American, 1871-1953)

USD 1,500 - 2,000

Lyndeboro Hills, New Hampshire sgn. l.r. W. J. Kaula; o/b, 15 by 18 in.; signed Paul Goodnow gilt frame 18 by 21.5 in.; label on reverse with Title, William J. Kaula/311 Fenway Studios/30 Ipswich St./Boston-Mass. Collection of G.W. Samaha NOTE: Apologies, we cannot approve bidders during the auction.

THE AMERICANA COLLECTION OF G. W. SAMAHA



48: GEORGE NEWELL BOWERS (Massachusetts/Connecticut, 1849-1909)

USD 500 - 800

Winter landscapesgn. I.I. G.N. Bowers 1873, o/b, unframed 8 by 12 in.Purchased Christie's, New YorkCollection of G.W. SamahaNOTE: Apologies, we cannot approve bidders during the auction.



49: JOHN JOSEPH ENNEKING (American, 1841-1916)

USD 2,000 - 3,000

recumbent lambsgn and dated I.I. Enneking 84; inscribed on reverse Boston June 15th, 1916 / To my young friend / Master John Webster Wesfall I present this study of a little lamb. / I hope he will always love and protect animals, especially those who are young and weak-/ From his old friend / John J. Ennekingo/b, 10 by 12 in.; gold frame 16 by 18 in.Enneking -Massachusetts/New York/Maine and OhioCollection of G.W. SamahaNOTE: Apologies, we cannot approve bidders during the auction.



50: JOHANN BERTHELSEN (American 1833-1972) NEW YORK WINTER SCENE

USD 2,000 - 3,000

59th Street looking East Plaza Squaresgn. I.r.; titled verso; 10 by 8 in.; framed 16 by 14 in.NOTE: Apologies, we cannot approve bidders during the auction.



50A: EDWARD DARLEY BOIT (Massachusetts/Italy, 1842-1916)

USD 800 - 1,200

coastline viewsgn. and dated I.I. ? Boit Biarritz.5 Juliet '99; watercolor on paper; 11.5 by 17.5 in.; linen mat, framed under glass 19 by 25 in.Collection of G.W. SamahaNOTE: Apologies, we cannot approve bidders during the auction.



51: DIMINUTIVE NEW ENGLAND WALNUT CHIPPENDALE BLOCK-FRONT CHEST

USD 4,000 - 6,000

old surface, shaped top, four drawers; bracket base; 30.5"h; case 30.5"w;19.5"d; top 34"wCollection of G.W. SamahaNOTE: Apologies, we cannot approve bidders during the auction.



52: 18TH C. CHIPPENDALE WALNUT TALL CASED CLOCK

USD 6,000 - 8,000

Pennsylvania or Virginia, 8-day brass works, moon-phase dial with ship; ornate carving to hood; carved shell to door; ogee feet; 97"h (not incl. 6" finial)Collection of G.W. SamahaNOTE: Apologies, we cannot approve bidders during the auction.



53: 18TH C. CHIPPENDALE WALNUT CHEST

USD 2,000 - 3,000

good color, overhanging top with 4 graduated drawers on applied bracket base, 33"h; case 34"w, 18.5"d; top 37.5"w, 21.5"dCollection of G.W. SamahaNOTE: Apologies, we cannot approve bidders during the auction.

THE AMERICANA COLLECTION OF G. W. SAMAHA



54: RHODE ISLAND CHIPPENDALE CHERRY CHEST

USD 3,000 - 5,000

four graduated drawers with original brass; overhanging molded top, ogee feet, 31.5"h; case 33.5"w; 18"d; top 37"w; 19.5"dCollection of G.W. SamahaNOTE: Apologies, we cannot approve bidders during the auction.



55: WILLIAM H. BROWN (1808-1883) PAIR OF FULL BODY SILOUHETTES

USD 500 - 700

Mr. and Mrs. William J. Florenceeach sgn. and dated W.H. Brown/1847...Boston Antheneum10 by 6.75 in.; original gilt frames 1.75 by 7.5 in.Collection of G.W. SamahaBorn in Charlston, NC, traveling artist William Brown was a portrait painter and silhouettist whose subjects were distinguished persons, especially from Philadelphia, New England, and Charleston. He trained as an engineer, but in the early 1830s, he devoted himself increasingly to art. He was noted for his series "Portrait Gallery of Distinguished Americans" published in 1846 as a book of lithographs of his full-body silhouettes with biographies.NOTE: Apologies, we cannot approve bidders during the auction.



56: NEWPORT CHIPPENDALE SANTO DOMINGO MAHOGANY DROP LEAF TABLE

USD 2,500 - 3,500

18th c., stop-fluted legs, old surface, 42.5"w; 27.5"hCollection of G.W. SamahaNOTE: Apologies, we cannot approve bidders during the auction.



57: 18TH C. LOOKOUT DOOR PANEL

USD 600 - 800

original glass set in panel door with old surface and remnants of paint; attached old hand written note Look Out Panel From One of the Doors of the Old Keys Hotel with Stengel Glass Now the Demuth Cigar Store; opening 9 by 7 in.; total 24 by 11 in. The Demuth Cigar Store, 114 E. King St., Lancaster, Pa. was said to be the oldest tobacco shop in America, est. in 1770.Collection of G.W. SamahaNOTE: Apologies, we cannot approve bidders during the auction.



58: EXCEPTIONAL 18TH C. WINDSOR BOW-BACK ARMCHAIR

USD 3,000 - 5,000

New England, painted gold rings to spindles and legs; grain-painted saddle seat; boldly splayed, turned legs joined by H-stretcher; 42"h; the wide seat 18.75"h; 21.5"Collection of G.W. Samaha, purchased John WaltonNOTE: Apologies, we cannot approve bidders during the auction.



59: RHODE ISLAND WINDSOR PAINTED, BRACE-BACK ARMCHAIR

USD 800 - 1,200

original green paint, continuous arm, 13 spindles; back 35"h; seat 17.5"h; 17"wCollection of G.W. SamahaNOTE: Apologies, we cannot approve bidders during the auction.



60: NEW HAMPSHIRE CHIPPENDALE CHEST

USD 1,000 - 1,500

Dulap school, old red surface; molded top, four graduated drawers with original hardware; with carved apron on ball and claw feet; 36"w; 34"h; 19.5"dCollection of G.W. SamahaNOTE: Apologies, we cannot approve bidders during the auction.

THE AMERICANA COLLECTION OF G. W. SAMAHA



61: (on 3) 18TH C. CARVED FURNITURE ELEMENTS

USD 400 - 600

1. a shell-carved small drawer front with original brass in old surface, 14"w; 7.25" h2. a Queen Anne leg (highboy or table), 27"total (leg itself is 23") 3. a shell carved drawer, 7"h; 15"w; 17"(lip damage to one edge)Collection of G.W. SamahaNOTE: Apologies, we cannot approve bidders during the auction.



62: NEW ENGLAND WINDSOR COMB-BACK, BOW-BACK ARMCHAIR

USD 3,000 - 5,000

prob. original black paint, knuckle arms, back 48.5"h; seat 19"h; 22.5"w Collection of G.W. SamahaNOTE: Apologies, we cannot approve bidders during the auction.



63: NEW ENGLAND QUEEN ANNE GRAIN PAINTED SIDECHAIR

USD 400 - 600

grain-painted as tiger maple; scalloped seat rail, cabriole legs ending in pad feet joined by block and turned stretchers; 40.5"h; slip seat 17"h; 19"wCollection of G.W. SamahaNOTE: Apologies, we cannot approve bidders during the auction.



64: 18TH C. NEW ENGLAND CHERRY SNAKE-FOOT CANDLESTAND

USD 300 - 500

26"h; top 16.75" diam. (quarter inch shrinkage)Collection of G.W. SamahaNOTE: Apologies, we cannot approve bidders during the auction.



65: SIGNED WESTERN PENNSYLVANIA FULL-STOCK RIFLE, BISLE

USD 1,800 - 2,800

overall 58.25"; early 19th c. Westmorland/Unity-style flint-lock rifle with bold relief carving at butt, breech tang, entry thimble, ramrod channel, and both sides of lock/side plate; 42.75" seven-groove octagon barrel with a 2.5" pointed tang; barrel signed on top flat S Bisle, 5.75" x 7/8" original configuration and complete flint lock plate which is stamped IR on back of plate below pan, possibly John Rogers or James Ross; 4" two-screw with release button toe plate; 8.5" trigger guard with unusual single set trigger with small latch; 7/8" silver escutcheon at wrist; eight-pointed star at cheek rest; brass furniture except escutcheon and star; original wood ramrod with finger thimble still present.Collection of G.W. SamahaNOTE: Apologies, we cannot approve bidders during the auction.



65A: FINELY ENGRAVED ALLEGHENY COUNTY RIFLE

USD 2,000 - 3,000

overall 49", mid 19th c.; finely engraved silver furniture; half-stock percussion sgn. on top barrel flat ??BROWN/ PITTSg PA; .36 caliber; 33-5/8" octagon seven-groove barrel with engraved 2.75" spear point tang; 4-7/8" x 1" finely engraved indistinguishable signed lock plate; 8.75" trigger guard having double set triggers with adjusting screw; finely engraved Federal eagle, four-panel patch box; .75" oval escutcheon plate; finely engraved four-screw toe plate 4-5/8"; exquisite tiger maple with checkered wrist; barrel still retains deep plum patina; ramrod may be original and patchbox still retains period patches.Collection of G.W. SamahaNOTE: Apologies, we cannot approve bidders during the auction.



65B: OUTSTANDING UNSIGNED FULL-STOCK RIFLE

USD 1,600 - 2,400

overall 62.5", mid 19th c., poss. Ohio; 46.75" seven-groove, octagon barrel .42 caliber.; 4-3/8" silver inlay plate on top barrel flat with a 3.75" spear point tang also retaining a .75" diamond inlay at left side barrel breech; 9" trigger guard with double set triggers and adjustment screw; unmarked 1" oval escutcheon plate; 5" x 1" lock plate marked SHARPE that has been converted from flintlock to percussion; unusual four-plate owl-eyed finial patch box; finely engraved 4" Federal eagle at cheek rest with brass edge guard; elaborate extended 8" button release, three-screw toe plate, and 7" butt plate finial; all barrel pin escutcheons have engraved details; good even tiger maple throughout; silver wire inlay at sideplate and left side butt stockCollection of G.W. SamahaNOTE: Apologies, we cannot approve bidders during the auction.

THE AMERICANA COLLECTION OF G. W. SAMAHA



65C: UNSIGNED WORCESTER COUNTY-STYLE, HALF-STOCK RIFLE

USD 1,200 - 1,800

overall 52.25", mid 19th c.; half-stock percussion 36-5/8" eight-groove octagon .38 caliber barrel with 2-3/8" spear-point tang; 4-3/8" x 7/8" engraved lock plate stamped STEEL & WARREN ALBANY; 8" trigger guard; classic Worcester Co. four-panel patch box; silver wire inlay at entry thimble, sideplate, breech tang, left side butt at cheek rest, and butt top flat with checkered wrist and fore stock; outstanding example of an original condition Worcester County rifle retaining original ramrod. NOTE: Apologies, we cannot approve bidders during the auction.



66: 18TH C. PENNSYLVANIA BOLD TIGER MAPLE TALL CHEST

USD 3,000 - 5,000

old color, three short drawers over five graduated drawers with oval, embossed beehive brass; scalloped skirt with flared feet; the top two side drawers have secret locks, 62"h; 37.75"w; 20.5"d Collection of G.W. Samaha NOTE: Apologies, we cannot approve bidders during the auction.



67: 19TH C. INLAID BELT KNIFE

USD 400 - 600

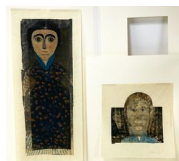
blade stamped with maker mark W within a circle; figural wood grip inlaid with what appears to be pewter; octagon pommel with pewter and bone cap; in hand-stitched leather, wool-lined scabbard; blade 7" overall; 2" false edge; knife 12" total NOTE: Apologies, we cannot approve bidders during the auction.



68: FOLK ART PORTRAIT (American, 19th c.)

USD 400 - 600

African American gentlemen unsigned, mixed media collaged on artist paper, matted; paper 29 by 20 in.; image 27 by 19 in. This portrait and the following lots 69-72, were purchased by Bill's partner, Madeleine Fisher around 1969 from a descendent of the Spooner family in Plymouth, Massachusetts. Several were mounted as one (see photo). The first Spooner in Plymouth was William who died in 1684. These portraits were possibly done by an African American portrait artist. (See notes with lot 69) NOTE: Apologies, we cannot approve bidders during the auction.



69: (2) FOLK ART PORTRAITS (American, 19th c.)

USD 800 - 1,200

two women unsigned, mixed media, collaged, matted; the first, a narrow vertical portrait on dark background of woman in dotted dress with blue scarf; 21.25 by 9.25 in. (paper), 19 by 7 in (image); the second is a translucent blue eyed girl with blue dress, cut-out to follow the shape of her head; 10 by 10 in. (paper) Collection of Madeline Fisher and G.W. Samaha. Ex: Spooner Family, Plymouth, Massachusetts The Spooners were a slave owning family, and some of the portraits were believed to be of their slaves. In a letter to his brother in 1776, William's son, Ebenezer (d.1718) mentions a slave, Cuff, he wants to sell for 150 pounds. A letter in 1777 from a Spooner slave, Cato, tells how he is in camp with the army eight miles from Albany during the Revolutionary War. NOTE: Apologies, we cannot approve bidders during the auction.



70: (2) FOLK ART PORTRAITS (American, 19th c.)

USD 800 - 1,200

each of a gentleman unsigned, mixed media, collaged, matted; the first a bearded man with hat titled along upper left edge SHORT ARM ; 17 by 11 in. (paper), 13.5 by 8.25 in (image); the second, a man in checkered cloak, written in pencil on verso matte board James Spooner/Merchant Plymouth Mass. The image appears to have been painted on an old ledger page- faintly visible through the back; 14.5 by 12 in. (paper); 12 by 9 in. (image) Collection of G.W. Samaha and Madeleine Fisher. Ex: Spooner Family, Plymouth, Massachusetts Research by Madeline Fisher: Short Arm is possibly one of several slaves owned by the Spooner family. NOTE: Apologies, we cannot approve bidders during the auction.

THE AMERICANA COLLECTION OF G. W. SAMAHA



71: (2) FOLK ART PORTRAITS (American, 19th c.)

USD 800 - 1,200

each of a well-dressed gentleman unsigned, mixed media, collaged, matted; the first is a man in formal outerwear with top hat; 15.5 by 9.5 in (paper); 12.5 by 6.75 in (image); the second is a man with blue ascot; 15 by 9.5 in. (paper); 12.5 by 7.25 in. (image), (small corner of upper right side paper is missing) Collection of G.W. Samaha and Madeleine Fisher; Ex: Spooner Family, Plymouth, Massachusetts NOTE: Apologies, we cannot approve bidders during the auction.



72: (2) FOLK ART PORTRAITS (American, 19th c.)

USD 800 - 1,200

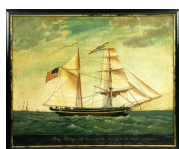
each of a gentleman, unsigned, mixed media, collage, matted; the first is blue-eyed with blue patterned undershirt; 15.75 by 9.5 in (paper); 12.5 by 7.5 in (image); the second is a stout fellow with dark background; 11 by 9 in. (paper); 8.75 by 6.75 in. (image) Collection of G.W. Samaha and Madeleine Fisher. Ex: Spooner Family, Plymouth, Massachusetts NOTE: Apologies, we cannot approve bidders during the auction.



73: AMERICAN PRIMITIVE, 19th c.

USD 3,000 - 5,000

Sunday, coming to the village church unsigned, o/tin, 10.5 by 15 in.; framed 13 by 18 in. Collection of G.W. Samaha NOTE: Apologies, we cannot approve bidders during the auction.



74: JAMES GUY EVANS, (Louisiana/England, 1810-1860)

USD 15,000 - 25,000

Brig Henry with American flagsgn. l.r. Evans inscribed Brig Henry of N. Kingston...Cole Comr. off the Rio Grande with Volunteers / October 21, 1846; o/c; 29 by 36 in.; black frame 31.5 by 38.5 in. G.W. Samaha collection; ascended through the Cole family of Bristol, Rhode Island. NOTE: Apologies, we cannot approve bidders during the auction.



75: JOHN BREWSTER, JR. (Connecticut/Maine, 1766-1854)

USD 200,000 - 300,000

portrait of the artist's sister, Betsy Avery Brewster (1798-1838) her sister, Sophia, was sold by CRN Auctions, 10/24/21 31 by 22.25 in.; framed 34 by 25 in. On reverse a facsimile of script signature from upper left corner J. Brewster lummer Collection of G.W. Samaha On loan to the Museum of Fine Arts, Boston in 2001 for their exhibit "American Folk". A letter from the MFA and their wall label for the painting is included. Brewster, a deaf itinerant painter, interrupted his career from 1817 to 1820 to learn sign language at the first and newly opened school for the deaf, the Connecticut Asylum in Hartford, Connecticut, now known as the American School for the Deaf. Brewster, at age 51, was the oldest in a class of seven, the average age being 19. This was the first class at the school which witnessed the birth of American sign language. NOTE: THERE IS NO ONLINE BIDDING ON THIS LOT, only in person, written bid, or phone bidding.



76: (2) AMERICAN PRIMITIVES, 19th c.

USD 600 - 1,200

children's drawings; a dog "ANDY" Charming Force 1836, frame in. (old tears in paper, water stain lower right); the second, a horse, frame 10.75 by 12.75 in. (folds in paper) water color on paper laid on newspaper over board; both 8 by 10 in.; both in similar frames 10.5 by 12.5 in., (horse frame a quarter inch larger); NOTE: Apologies, we cannot approve bidders during the auction.



77: AMERICAN PRIMITIVE, 19th c.

USD 8,000 - 12,000

Abigail Elizabeth Avery, East Charlemont, Buckland, Massachusetts half portrait of girl seated among swags of drapery, holding her cat/c, 32 by 26 in.; poss. original grain-painted, ebonized frame 42 by 36 in. See History of Buckland, Kendrick Kellogg Collection of G.W. Samaha NOTE: Apologies, we cannot approve bidders during the auction.

THE AMERICANA COLLECTION OF G. W. SAMAHA



78: CHARLES HENRY GIFFORD (American, 1839-1904)

USD 6,000 - 8,000

harbor docks, Fairhaven, Massachusettsgn. and dated l.r. C.H. Gifford 93/Aug.o/c, 14 by 24.5 in.; gilt frame 16.5 by 27 in.Collection of G.W. SamahaNOTE: Apologies, we cannot approve bidders during the auction.



79: AMERICAN PRIMITIVE, 19th c.

USD 3,000 - 5,000

three-quarter portrait of girl with basket, holding a floral sprigo/c, 28 by 23 in.; framed 30 by 24 in.Collection of G.W. SamahaNOTE: Apologies, we cannot approve bidders during the auction.



80: (on 7) MINIATURE FULL-BODY WATERCOLOR OF GENTLEMAN

USD 250 - 350

early 19th c., hunched elderly gentleman wearing a top hat, carrying an umbrella, 2.75 by 2 in. written on reverse of frame Ben E. Wheeler, Sr.; original gilt frame 4 by 3 in.; along with another tiny watercolor of horse and rider, sgn. Bernard, 3.5 by 2.5in. (blue blob of ink on back of horse) ; (3) unsigned, unframed watercolors; (2) engravings, Bali women "Offering Procession", sgn. Weygirs..? 1937; on handmade paper, image 7 by 4 in.NOTE: Apologies, we cannot approve bidders during the auction.



81: AMERICAN, 19th c.

USD 3,000 - 5,000

a summer afternoon on the porch, pross. Hudson River/c, 24 by 32 in.; original gilt frame 32 by 40 in.Collection of G.W. Samaha, purchased Sotheby's January 20, 2005, lot 961. Purportedly this painting was in the attic of the house in Ashfield, Massachusetts which belonged to the artist Edwin Romanzo Elmer, famous for his 'Mourning Picture' in which this house is seen.NOTE: Apologies, we cannot approve bidders during the auction.



82: attrib. JAMES HOPE (American, 1818-1892)

USD 2,000 - 3,000

c. 1860, overview of Vermont village, near Castleton, mountains in distanceo/c (relined); 26 by 38 in; walnut frame 33 by 45 in.Collection of G.W. Samaha.NOTE: Apologies, we cannot approve bidders during the auction.



83: AMERICAN, 19th c.

USD 700 - 900

coastline view with house on hill, American flag, teppee in distancessgn. and dated l.l. J.W. Murray 1875; o/b; 12 by 17 in; original gilt frame 16 by 21 in.Collection of G.W. Samaha.NOTE: Apologies, we cannot approve bidders during the auction.



84: M.P. MOTT (American, 19th c.)

USD 1,000 - 1,500

Twin LightsChatham Light Station, Cape Codsgn. l.l. M.P. Mott; o/c, 12 by 16 in.; framed 16 by 20 in. The twin lights were established in 1808. In 1923, one of the towers was moved to Eastham, Cape Cod to serve as Nauset Light.Collection of G.W. Samaha.NOTE: Apologies, we cannot approve bidders during the auction.

THE AMERICANA COLLECTION OF G. W. SAMAHA



85: PAIR OF CHIPPENDALE BRASS ACORN-TOP ANDIRONS

USD 500 - 800

c. 1787, attrib. Whittingham, New York, c., turned log stops, ball and claw feet; 20.5"hCollection of G.W. SamahaNOTE: Apologies, we cannot approve bidders during the auction.



86: PAIR BRASS AND IRON PENNY-FOOT ANDIRONS

USD 400 - 600

c. 1800, diamond and flame finial, 25.5"hCollection of G.W. SamahaNOTE: Apologies, we cannot approve bidders during the auction.



87: SILAS HOADLEY MAHOGANY TALL CASED CLOCK

USD 3,000 - 5,000

painted wood dial signed Silas Hoadly, (1786-1870), Plymouth, Connecticut, wooden works; hood with original fretwork and full brass capped columns; waist with brass capped quarter columns; 79"h; 84"h incl. steeple brass finial; base incl. ogee feet 18"w; 12"d, with weights and pendulumCollection of G.W. Samaha In 1809 Hoadley formed a clock-making partnership in Plymouth, Connecticut with Eli Terry and Seth Thomas as Terry, Thomas & Hoadley. The partners gradually withdrew to create their own firms ? Terry in 1810, Thomas in 1814 ? leaving Silas Hoadley as sole owner. He continued to make clocks until 1849. NOTE: Apologies, we cannot approve bidders during the auction.



88: MARYLAND CHIPPENDALE WALNUT TALL CASED CLOCK, CHANDLEE

USD 8,000 - 12,000

Ellis Chandlee (1755-1816)c. 1795, dial signed ELLIS CHANDLEE/ NOTTINGHAM95.5"h (incl. finial); 22.5" at base; 11"dCollection of G.W. Samaha Nottingham was originally situated in Chester County, Pennsylvania. In 1769, after the ratification of the Mason Dixon Line, it became part of Cecil County, Maryland. Three generations of this family were clock and instrument makers working in Nottingham. Ellis apprenticed to his father, and he worked with his brothers in the shop. He established the firm of Ellis Chandlee & Brothers, in 1790, shortly before his father's death. The firm was dissolved in 1797 when the youngest brother, John Chandlee, left the firm. Ellis and his brother Isaac worked together from approximately 1792 to 1804. The case attributed to the shop of Jacob Brown, c. 1795.NOTE: Apologies, we cannot approve bidders during the auction.



89: RHODE ISLAND CHIPPENDALE TALL CASED CLOCK, SPAULDING

USD 8,000 - 12,000

marked on dial SPAULDING / PROVIDENCE, brass and silvered dial with strike/silent, pierced brass spandrels; Newport mahogany case in old surface, 81"tall; waist 13.75"w; base 19"w; 10"deepCollection of G.W. SamahaRestorer's notes: "The back of the seconds bit is engraved Brown/Boston. The only repair mark found is RW 12/26. The clock is in very good condition with very few alterations or bad repairs."NOTE: Apologies, we cannot approve bidders during the auction.



90: MASSACHUSETTS CHIPPENDALE MAHOGANY TALL CASED CLOCK

USD 6,000 - 8,000

attrib. Tabor, Roxbury case with brass stop-fluted columns, ogee feet102"h (incl. finial); base 20"w; 10"dScript note on inside of back of case: This clock was made by Stephen Tabor in 1805.....Collection of G.W. SamahaNOTE: Apologies, we cannot approve bidders during the auction.



91: RHODE ISLAND CHIPPENDALE TIGER MAPLE CHEST-ON-CHEST

USD 8,000 - 12,000

top part with five graduated drawers; lower part with three graduated drawers, original brass; bracket feet; 86"h (incl. finial); case 37.5"w; 17.5"dCollection of G.W. SamahaNOTE: Apologies, we cannot approve bidders during the auction.

THE AMERICANA COLLECTION OF G. W. SAMAHA



92: NEW ENGLAND QUEEN ANNE MAPLE, SPANISH-FOOT ARMCHAIR

USD 700 - 900

rush seat, 41"h; 23" w; seat 16"hNOTE: Apologies, we cannot approve bidders during the auction.



93: NEW ENGLAND QUEEN ANNE MAHOGANY, FAN-CARVED LOWBOY

USD 3,000 - 5,000

molded, over-hanging top with cut corners, long drawer over three, center drawer with deep fan carving, brass appears original, 31" h; 30" w; 18" d; top 35" h; 19.5" wNOTE: Apologies, we cannot approve bidders during the auction.



94: FEDERAL GILT AND EGLMISE MIRROR

USD 700 - 900

eglomise panel of little girl holding her hat, bordered with scrolls and swags, 37.5"h; top 21.5"Collection of G.W. SamahaNOTE: Apologies, we cannot approve bidders during the auction.



95: QUEEN ANNE-STYLE UPHOLSTERED MAHOGANY DAY BED

USD 800 - 1,200

19th c., eight legs with pad feet joined by turned stretchers; 36" by 32" by 70"Collection of G.W. SamahaNOTE: Apologies, we cannot approve bidders during the auction.



96: MEMORIAL NEEDLEWORK WITH VILLAGE SCENE, 1809

USD 2,000 - 3,000

To the memory of S.A. Hyde / who died 18th February 1809 / Aged 8 years 8 months, in reverse painted oval opening frame; 18 by 23 in.; framed 22 by 27 in.Collection of G.W. SamahaNOTE: Apologies, we cannot approve bidders during the auction.



97: MASSACHUSETTS SILK NEEDLEWORK MOURNING PICTURE, SARGENT

USD 3,000 - 5,000

two woman grieving at grave of two children; inscription on monument: Sacred to the Memory of / EBENEZER SARGENT / Born July 17th 1789. Obt. Nov 10th 1790 / EBENEZER SARGENT / Born Jan 21st 1793. Obt. Aug 12th 1793; gilt lettering on black reverse painted mat EXECUTED BY MARY SARGENT. 1806; oval needlework 15.5 by 12 in; original gilt frame 21.5 by 17.5 in. Original retailer's label on reverse.Prov.: By descent in the maker's family to Frances Ellen Moody Dole, the maker's granddaughter; then in 1922 to Ellen Dole's friend Alice Choate (Perkins) Leach, the grandmother of the consignor. Collection of G.W. SamahaNOTE: Apologies, we cannot approve bidders during the auction.



98: CARVED AND PAINTED BED

USD 800 - 1,200

c. 1840, fan carving to headboards, turned posts with large flame finials; 60"h; 53.5"w; 77" dCollection of G.W. SamahaNOTE: Apologies, we cannot approve bidders during the auction.

THE AMERICANA COLLECTION OF G. W. SAMAHA



99: HARRY HERMAN ROSELAND (American, 1866-1950)

USD 2,000 - 3,000

profile portrait of an African American gentlemansgn. in pencil on reverse u.r. Harry Roselando/b; 9.5 by 7.5 in.; framed 15.25 by 13.25 in.Collection of G.W. SamahaNOTE: Apologies, we cannot approve bidders during the auction.



100: 19TH C. GENRE SCENE

USD 800 - 1,200

in front of the blacksmith shopo/c; relined; 11.5 by 16.25 in.; framed 16.25 by 21.25Collection of G.W. SamahaNOTE: Apologies, we cannot approve bidders during the auction.



101: attrib. JOHN WILLIAM CASILEAR (American, 1811-1893)

USD 1,200 - 1,500

Cedersunsigned with title/artist plaque on frame, o/b, woman and child walking in woods;10 by 12.5 in.; framed, 15.5 by 17.75 in.Collection of G.W. SamahaNOTE: Apologies, we cannot approve bidders during the auction.



102: ALFRED ORDWAY (Massachusetts, 1821-1897)

USD 800 - 1,200

summer landscape with maple tree and pondsgn. l. r. A Ordwayo/b; 10 by 14 in.; framed 13 by 17 in.Collection of G.W. SamahaNOTE: Apologies, we cannot approve bidders during the auction.



103: AMERICAN, 19th c.

USD 400 - 600

still life with fruit and glass of wineunsigned, o/c; 10 by 14 in.; gilt frame 16.25 by 20.25 in.Collection of G.W. SamahaNOTE: Apologies, we cannot approve bidders during the auction.



104: AMERICAN, 19th C.

USD 300 - 500

mountain view with figure walking on train tracksgn. illegibly, l.l. ...Culver ?8 by 12 in.; in deep, ornate gilded frame, 13 by 11 in.Collection of G.W. SamahaNOTE: Apologies, we cannot approve bidders during the auction.



105: AMERICAN, 19th c.

USD 300 - 500

stormy sea with lighthouse and sailboatsgn. illegibly, l.l. ...Culver ?8 by 12 in.; framed 13 by 17 in.Collection of G.W. SamahaNOTE: Apologies, we cannot approve bidders during the auction.



106: SMALL-SIZED PENNSYLVANIA CHIPPENDALE WALNUT CHEST

USD 2,500 - 3,500

molded top with cut corners, three graduated drawers with original brass, flanked by fluted quarter columns, ogee feet; 35.5"h; case 31"w; 19.5"d; top 35"Collection of G.W. SamahaNOTE: Apologies, we cannot approve bidders during the auction.

THE AMERICANA COLLECTION OF G. W. SAMAHA



107: ANTOINE-LOUIS BARYE (French, 1795-1875) BRONZE

USD 1,000 - 1,500

recumbent panthersgn. BARYE, 7.5"; 3"h Collection of G.W. SamahaNOTE: Apologies, we cannot approve bidders during the auction.



108: PIERRE JULES MENE (French, 1810-1879) BRONZE

USD 300 - 400

crouched haresgn. PJ MENE, 2"h; 4"longCollection of G.W. SamahaNOTE: Apologies, we cannot approve bidders during the auction.



108A: MINIATURE BRONZE FOX

USD 200 - 300

prob. an Austrian bronze, 2.5"; mounted on a chunk of agate 6"wCollection of G.W. SamahaNOTE: Apologies, we cannot approve bidders during the auction.



109: ARTHUR PUTNAM (American, 1873-1930) BRONZE

USD 2,000 - 3,000

recumbent mountain lionsgn. PUTNAM '08, base 9.5"; 4"hCollection of G.W. SamahaNOTE: Apologies, we cannot approve bidders during the auction.



110: HERBERT CYRUS FARNUM (American/Rhode Island, 1866-1925)

USD 700 - 900

Veronastone bridge, women washing laundry at the river, Verona, Italysgn. l.r. H. Cyrus Farnum, Veronao/c, 13 by 18 in.Collection of G.W. SamahaNOTE: Apologies, we cannot approve bidders during the auction.



111: BOOK - GROTESQUES, LEONARD BASKIN (1922-2000)

USD 1,500 - 2,500

limited edition 20/26; Gehenna Press, 1991;30 signed and numbered etchings in the categories of Birds; Imps; Insects and Beings; printed on handmade papers from Italy and France; inscribed and signed on back page in pencil, Leonard Baskin/ For Bill from Leonard, in original black linen folio box, 14.25 by 11 in.Collection of G.W. SamahaBaskin and his wife, Lisa, were close friends of Bill Samaha and his partner, Madeleine Fisher.NOTE: Apologies, we cannot approve bidders during the auction.



112: SMALL FOLIO OF (15) WATERCOLORS, LEONARD BASKIN (1922- 2000)

USD 1,000 - 1,500

(15) watercolor drawings on handmade Arches paper of animals and insects, each signed Baskin, encased in silk bound folio inside a faux-leather book/box with marbled front and leather binding, titled on binding DRAWINGS BY LEONARD BASKIN FOR G.W.S; drawings approx. 3.5 by 5 in.; case 4.5" h; 6.5"w; consisting of (6) birds, (4)insects, a rabbit, a bear, a calf, a moose, and a buffalo; along with the published bound set with these watercolors Miniature Natural History, 1st Series, 1983. 4 volumes in cardboard case; 4 by 4 in. (outer case rubbed at edges)The collection of G.W. Samaha, friend of the artistNOTE: Apologies, we cannot approve bidders during the auction.

THE AMERICANA COLLECTION OF G. W. SAMAHA



112A: BOOK AND WOODBLOCKS: HUGHES / LEONARD BASKIN

USD 300 - 500

Ted Hughes, A Primer of Birds, The Gehenna Press, 1981 included in the case a portfolio of (5) bird woodcuts on handmade paper, Baskin signed/ touched/proofs, 12 by 9 in.; along with (5) small woodblocks proofs of insects Collection of G.W. SamahaNOTE: Apologies, we cannot approve bidders during the auction.



113: BOOK - IRISES , LEONARD BASKIN (1922-2000) BOOK

USD 1,200 - 1,700

26/35 limited edition; Eremit Press, 1988; (19) large 4to etchings on handmade paper showing different states black and white, then color; all numbered 26/35 and signed in pencil baskin; 13.25 by 12 in.; full Morocco gilt ruled blue leather binding, in original folding box"Thirty five copies of Irises were achieved by the Eremit Press during the Spring & Winter of 1988. This is copy number (handwritten in pencil) 26/Leonard Baskin/For Bill/with affectionate friendship/from Liza and Leonard /1989"Collection of G.W. SamahaNOTE: Apologies, we cannot approve bidders during the auction.



113A: BOOKS ON THE WORKS OF LEONARD BASKIN

USD 50 - 100

including the works of Baskin, and books Baskin illustrated including children's books, some inscribed and signed



114: BOOK- APOCALYPSE CLOCKS , WORKS BY MICHAEL KUCH

USD 1,000 - 1,200

For Leonard (Leonard Baskin) 51/60Double Elephant Press, Northampton, MA, pub. in 2000, copy 51 of 60folio hardcover, containing 13 colored copper plates on handmade paper, the frontpiece in black and white; in original black cloth clamshell caseCollection of G.W. SamahaKuch wrote the poems, drew, bit and printed the copper plates. He dedicated the book to Leonard Baskin.Double Elephant Press published this book of fantastical clocks for the end of the millennium. The clock and skeleton fantastical images depict the destruction throughout the ages and portend the end of the world., the NOTE: Apologies, we cannot approve bidders during the auction.



115: LEONARD BASKIN (American, 1922 - 2000) WOODBLOCK

USD 400 - 600

TYRANNUS B1982large limited edition artist' proof woodblock in black and red, sgn. and inscribed in pencil: title.... artist's proof....For Beth from Leonard, 1983; also sgn. l.r. Baskin; impression 72 by 38 in.; paper 80 by 43 in. unframed (rolled)embossed FOX watermark on paper; along with paper covered publication LEONARD BASKIN/MONUMENTAL WOODCUTS/1952-1963, R.F. Johnson, Fine Arts Museums of San Francisco, 2000, this work pictured on page 32. Collection of G.W. SamahaNOTE: Apologies, we cannot approve bidders during the auction.



116: BOOK - 13 POEMS BY OWN WILSON , 1956: illus. BEN SHAHN

USD 400 - 600

Northampton, Mass: Gehenna Press, 1956. Quarter brown morocco (hard cover), over paper boards, housed in publisher's slipcase. Unpaginated; illustrated. Frontispiece portrait of Wilfred Owen, and printed from a block by Leonard Baskin from a Shahn drawing; text incl. (15) lithographs after original illustrations by Shahn; Number 103 of 400 copies printed by Esther and Leonard Baskin and Richard Warren at The Gehanna Press. Pressman: Romeo Cadieux, Compositor: William Scully; 14 by 10.25 in.Collection of G.W. SamahaNOTE: Apologies, we cannot approve bidders during the auction.

THE AMERICANA COLLECTION OF G. W. SAMAHA



116A: (on 3) LEONARD BASKIN, (1922-2000)

USD 400 - 600

colored etching of Augustus St. Gaudens, sgn. and inscribed in pencil Trial Proof / A. St.. Gaudens / touched / for Beth (Madeleine) love from Lisa and Leonard / 3-9-85 / Baskin; 16.5 by 11 in. (sight); along with a gallery catalog LONARD BASKIN / SIX NEW WOODCUTS AND NINE NEW ETCHINGS, 1998; paper catalog 14 by 11 in. (some dirt on front cover.); and a paper cover book The Gehenna Press / The Work of Fifty Years / 1942-1992, University Press of New England, 1992 Collection of G.W. SamahaNOTE: Apologies, we cannot approve bidders during the auction.



117: (7) VARIOUS SIZED SMALL BURL BOWLS

USD 400 - 600

smaller sizes; ranging 3.5" - 5.5" diam., two with etched initials on bottom.Collection of G.W. SamahaNOTE: Apologies, we cannot approve bidders during the auction.



118: LARGE TREENWARE LIDDED JAR

USD 600 - 800

19th c., lid with acorn finial, 9.5"h; 5.5"diam.Collection of G.W. SamahaNOTE: Apologies, we cannot approve bidders during the auction.



119: (7) VARIOUS SIZED SMALL BURL BOWLS

USD 300 - 500

ranging from 5.75" to 7" diam., one with remnants of blue decoration on interior, some with turned detailCollection of G.W. SamahaNOTE: Apologies, we cannot approve bidders during the auction.



119A: 19TH C. BURL BOWL

USD 300 - 500

4"h; 10.5"diam.NOTE: Apologies, we cannot approve bidders during the auction.



120: (5) ROBENSONIA COLONIAL-STYLE REDWARE CHARGERS

USD 700 - 900

Pennsylvania, 20th c., (4) signed Breining with yellow glaze ground; North Star, 12.5" diam.; soldier on horse, 1975..., 12.5 diam.; a German couple, To be loved..., 12.5"diam.; two birds, 12.5" diam.; and another unsigned, bird, stamped Metropolitan Museum c.537, 13"diam.NOTE: Apologies, we cannot approve bidders during the auction.



121: (4) COLONIAL-STYLE TIN GLAZED RED WARE CHARGERS

USD 400 - 600

20th c.; round with two fish, sgn. and dated, Greg Shooner, 1994 (shows some wear to surface and small dings to rim), 11" diam.; deep round, marked, Greenfield Village, 11" diam.; loaf pan with bird, sgn. Breining, 17.5"x 11.5"; loaf pan, comb decorated, sgn. Breining, 17.5"x 12"Collection of G.W. SamahaNOTE: Apologies, we cannot approve bidders during the auction.

THE AMERICANA COLLECTION OF G. W. SAMAHA



122: (on 3) ROSEWOOD BRASS BOUND CARPENTER'S LEVEL

USD 400 - 600

marked on end, No. 1, with original leather case, 26"; an ebony and brass SCRIBE, 11", 28"; T.W. GARDINER, KIRBY & BRO., MAKERS/51 FOULTON ST. NY, sliding measuring square with bone numbers, 19"; measures up to 18" (piece missing from handle)Collection of G.W. SamahaNOTE: Apologies, we cannot approve bidders during the auction.



123: (4) WOODWORKING PLANES

USD 500 - 700

a small plane in original blue paint, 10" (hairline age splits); a large wooden plane, JAMES CAM/ WARRANTRD-STEEL, 27.5"; 3"sq. (hairline age splits); a metal plane with unusual wood grip, J.CLARKE, 10.5"; and another metal plane, STANLEY NO. 78, MADE IN USA, 10"Collection of G.W. Samaha NOTE: Apologies, we cannot approve bidders during the auction.



124: (on 7) TOOLS INCL. TWO ENGLISH HAND DRILLS

USD 700 - 900

a rosewood and brass mounted hand drill, on brass button in knob Wm. MARPLES & SONS/HIBERNIA WORKS/SHEFFIELD; WILLIAM MARPLES SOLE MANUFACTURER OF THE ULTIMATUM FRAMED BRASS/SHEFFIELD and BY HER MAJESTY'S ROYAL LETTERS also sgn. on brass handle mount W.GROVES; 13.5"; with wood stand; another wood brass mounted hand drill H.HAWKE/SOLLY WORKS/SHEFFIELD, 13.75"; a 19th c. wrench with wood handle, P.S.&W.Co./SOLID BAR/PAT. JAN.1897 MADE IN USA, 12"; a 19th c. wood level in original wood box, 24"; 2"sq.; (2) band saws with hardwood handles, sgn. illegibly, 31" (hairline on handle); the other initialed HK 1796 (note says owner J Slaughter), 10.5"; and a small hammer with wood handle, 8" NOTE: Apologies, we cannot approve bidders during the auction.



125: NEW ENGLAND WILLIAM AND MARY CHEST IN BLUE PAINT

USD 4,000 - 6,000

two drawers over three graduated long drawers, original paint and hardware, original high ball feet, 38"h; 36"w; 19"dCollection of G.W. SamahaNOTE: Apologies, we cannot approve bidders during the auction.



126: NEW YORK CHIPPENDALE PAINTED BLANKET CHEST

USD 1,500 - 2,500

prob. Albany, painted date of 1799, top, front and sides with painted pinwheels, horses, crowns, dogs and florals; applied bracket base, interior till, 24.5"h; case 46.75"w; top 49"w; 22.75"dNOTE: Apologies, we cannot approve bidders during the auction.



127: THREE PAIRS OF EARLY PEWTER CANDLESTICKS

USD 500 - 700

18th c., the tallest with round base, 10"; another with shaped petal base, 7.5"h; the smallest with cupped round base, 5"NOTE: Apologies, we cannot approve bidders during the auction.



128: (on 8) GROUP OF EARLY ITEMS incl. BASKETS

USD 400 - 600

(5) splint baskets: a hanging wall basket, 7.5"h, 11"w"; a miniature double handled splint basket, 4"h, 4" diam.; a tiny open weave basket, 1.5" h x 2.5" diam.; (2) miniature rush sided/splint bottom baskets, 1"h x 1.5"sq.;Prov.: Roger Bacon (Brentwood, NH) Collection, Skinner, Sept. 1982, lot 50; along with a MOCHA PITCHER, 7.5" (chips; hairlines along rim); a CHALKWARE RAM, 7.5"h (repaired)decorated REDWARE JAR, 7"h (chips) Collection of G.W. Samaha NOTE: Apologies, we cannot approve bidders during the auction.

THE AMERICANA COLLECTION OF G. W. SAMAHA



129: NEW ENGLAND QUEEN ANNE MAPLE SLANT LID DESK ON FRAME

USD 3,000 - 5,000

old untouched surface; four graduated drawers (bales original); on frame with scalloped skirt and bandy cabriole legs; 9.5"h; 35"w; 17.5"dCollection of G.W. SamahaNOTE: Apologies, we cannot approve bidders during the auction.



130: FOLK ART MIXED MEDIA WOOLIE, BAPTISM

USD 1,000 - 1,500

needlework, paint and penwork on paper, mounted on waxed canvas depicting a river baptism of an indigenous man; the scene includes children, animals and chariot in a mountainous tropical setting; 24 by 32.75 in. (sight); framed under glass, 29 by 38 in.Collection of G.W. SamahaNOTE: Apologies, we cannot approve bidders during the auction.



131: CAST IRON FIGURE OF PORTLY GENTLEMAN IN ORIGINAL PAINT

USD 300 - 500

19th c., cast in two parts, mounted on wood stand; 16"hCollection of G.W. SamahaNOTE: Apologies, we cannot approve bidders during the auction.



132: 19TH C. FOLKART STONEWARE OVOID JUG

USD 800 - 1,200

overall decoupage with old postage stamps, 16"h; 10"wCollection of G.W. SamahaNOTE: Apologies, we cannot approve bidders during the auction.



133: CAST IRON GARDEN STATUE OF A CLASSICAL WOMAN

USD 2,000 - 3,000

head looking down, holding a wreath, 50"tallCollection of G.W. SamahaNOTE: Apologies, we cannot approve bidders during the auction.



134: LARGE OVAL CAST IRON URN

USD 1,500 - 2,500

28" h; 47" w; 26" d incl. handlesCollection of G.W. SamahaNOTE: Apologies, we cannot approve bidders during the auction.



135: THE STORER FAMILY BOSTON CHIPPENDALE BLOCK-FRONT SECRETARY

USD 20,000 - 30,000

c. 1770, Santo Domingo mahogany, good color; three parts, flat molded top above pair of glazed doors with candle slides; the unusual central part with fall-front lid having pull-out writing slide which also supports the lid, the interior fitted with compartments; the base part has four graduated. block-fron drawers with original batwing brass on ogee feet; 89" h; case 39"w; 23"d; 24"d w/blocksCollection of G.W. SamahaNote: "This block-front secretary was in the Amelia Peabody Estate and was purchased by me when the "estate" was disposed of. Probably originally owned by Ebenezer Storer Jr. (Amelia's mother was a descendent). (signed) G.W.Samaha"Ebenezer Storer, Jr. (1738-1807) was a successful cloth merchant who owned a sumptuously furnished house on Sudbury Street. Amelia Peabody (1890-1984) was a noted Boston sculptress and patron of the arts. She was the only child of banker Frank E. Peabody. Her mother was Gertrude Eaton.Remains of hand written note in drawer: Fr...Gov. Hancock...Beacon Hill...John Hancock, signer of the Declaration of Independence was the first and third Govenor of the Commonwealth of Massachusetts. Paper label in top drawer: Undivided Property/William S. & Francis S. Eaton....Nov. 1911NOTE: Apologies, we cannot approve bidders during the auction.

THE AMERICANA COLLECTION OF G. W. SAMAHA



136: QUEEN ANNE CHERRY CANDLE STAND WITH CANDLE DRAWER

USD 600 - 900

New England, 28" h; top 16" sq. Collection of G.W. Samaha NOTE: Apologies, we cannot approve bidders during the auction.



137: NEW ENGLAND QUEEN ANNE WALNUT SLIPPER CHAIR

USD 1,000 - 1,500

in old color, balloon-seat with original frame, back 36"h; seat 14"h; 20" at widest Collection of G.W. Samaha NOTE: Apologies, we cannot approve bidders during the auction.



138: NEW ENGLAND QUEEN ANNE CHERRY CANDLESTAND

USD 500 - 700

scallop- top with cut corners , slender turned post, 25.5"h; top 17.5 by 17" Collection of G.W. Samaha NOTE: Apologies, we cannot approve bidders during the auction.



139: NEW ENGLAND CHIPPENDALE CHERRY SLANT-LID DESK

USD 3,000 - 4,000

with amphitheater fan-carved interior, on applied and shaped bracket base, antique brasses that have been moved; 42"h; 36"w; 19"d Collection of G.W. Samaha NOTE: Apologies, we cannot approve bidders during the auction.



140: PAIR OF ORNATE 5-LIGHT GILT BRONZE CANDELABRA

USD 500 - 700

19th c., with grapevine motif; 20"h x 18.5"w x 4" d. (base) Collection of G.W. Samaha NOTE: Apologies, we cannot approve bidders during the auction.



141: 19TH C. WHITE METAL 3-PIECE GARNITURE SET

USD 150 - 200

3-candle center piece; 17.5"h; 14"w with pair of single light candlesticks; 14"h; 6.75"w; all with swag decoration and pressed metal figures of a couple Collection of G.W. Samaha NOTE: Apologies, we cannot approve bidders during the auction.



142: NEW ENGLAND MAPLE AND PINE WILLIAM AND MARY TABLE

USD 4,000 - 6,000

c. 1720, single drop leaf, supported by an unusual slide-out leg, 25.5" h; 31" round; 19.25 leaf Collection of G.W. Samaha (one of Bill's favorite pieces). NOTE: Apologies, we cannot approve bidders during the auction.



143: NEW ENGLAND WINDSOR COMB-BACK ARMCHAIR

USD 800 - 1,200

old surface, turned legs with H-stretcher, 39"h; seat 17"h; 20"w Collection of G.W. Samaha NOTE: Apologies, we cannot approve bidders during the auction.

THE AMERICANA COLLECTION OF G. W. SAMAHA



144: NEW ENGLAND MAPLE AND PINE TEA TABLE

USD 1,500 - 2,000

18th c., oval top, tiger maple drawer, block and turned legs, 24.25"h; 29.5" w; 22"dCollection of G.W. SamahaNOTE: Apologies, we cannot approve bidders during the auction.



145: (on 3) GORHAM COIN SILVER AESTHETIC COFFEE SERVICE

USD 2,000 - 3,000

marked Gorham & Co. / COIN / Gorham hallmarks / 140with repousse details; consisting of a tall coffee pot, 12.5"h, also on bottom 38oz/7dwt; a lidded cream pitcher, 8.5"h; and a covered sugar, 7.5"; ram head and ring handles, chased floral, fruit, and acanthus leaf decoration; monogram MLD; 71. troy oz.Collection of G.W. SamahaNOTE: Apologies, we cannot approve bidders during the auction.



146: (on 3) COIN SILVER SMALL PITCHERS

USD 600 - 800

water pitcher with beaded edge,monogrammed on front, James Ball & Co. / Boston / Pure Silver Coin, 10.5"h; 17.3 troy oz.; large creamer B. Gardiner / New York, with embossed windmill, beehive, wagon and flora banding; 8" h; 16.3 troy oz.; large repousse creamer Crosby Morse & Foss / Boston / Coin, monogrammed, 9.5" h; 13.2 troy oz.; total lot weight 46.8 troy oz.Collection of G.W. SamahaNOTE: Apologies, we cannot approve bidders during the auction.



147: (on 4) BOSTON COIN SILVER WITH 2 SMALL SILVER VESSELS

USD 300 - 500

(2) COIN SILVER CHILDREN'S MUGS both marked Pure Silver Coin; the first,maker Lincoln & Foss, inscribed William Brownell, December 1851 ; the other,Jones, Ball & Poor inscribed George H. Gray to his nephew Thomas John Gray in token of affection for his late father, Oct. 11, 1849; 3" and 3.5"; along with 925 silver creamer, RAND & CRANE, 4"; and a hallmarked Indian Colonial footed mug with embossed thistle decoration, 4" poss. Twentyman & Co. (1821-1854)Total weight of lot 18.8 troy oz.Collection of G.W. SamahaNOTE: Apologies, we cannot approve bidders during the auction.



148: (on 13) GROUP OF ORNATE STERLING SERVING UTENSILS, POMPADOUR

USD 700 - 900

(6) by Whiting (division of Gorham), Pompadour pattern, consisting of a large asparagus fork, salad fork and spoon, a meat fork, and two tablespoons; also by Whiting (3) Lily pattern, ladle, berry spoon and pierced server; Gorham berry spoon and meat fork, Versailles pattern; along with an International salad for and spoon, Frontenac pattern; approx. 40 troy oz. totalCollection of G.W. SamahaNOTE: Apologies, we cannot approve bidders during the auction.



149: STERLING SILVER OVAL COVERED VEGETABLE

USD 400 - 600

Whiting hallmark and pattern #704; engraved JJM, banded scroll edge, repeated inside of top so when removed, it becomes a second open serving piece, handle removeable, 10.5"; 55 troy oz.Collection of G.W. SamahaNOTE: Apologies, we cannot approve bidders during the auction.



150: ENGLISH SILVER FOOTED LIDDED HOT WATER PITCHER

USD 600 - 800

hallmarked: Benjamin Smith II, London 1825scrolling under spout, three scrolled and foliate legs, wood handle; 8"; 36 troy oz. Collection of G.W. SamahaNOTE: Apologies, we cannot approve bidders during the auction.

THE AMERICANA COLLECTION OF G. W. SAMAHA



151: (on 24) GROUP OF STERLING AND COIN SILVER

USD 400 - 600

incl. Tiffany & Co. youth's mug, Beatrice Howard Thompson....1884, 3.75"(slight dent); along with Lily pattern berry spoon, fork; Strasbourg pierced serving spoon; four nut dishes; sugar spoon; six Zodiac teaspoons; pierced jam spoon; two teaspoons; coin pair of master salt spoons; coin sugar and teaspoon; 41 troy oz. totalCollection of G.W. SamahaNOTE: Apologies, we cannot approve bidders during the auction.



152: CARVED MAHOGANY BALL AND CLAW FOOT CHAIR LEG

USD 400 - 600

finely carved mahogany wing chair leg, ball and claw foot and acanthus leaf knee, mahogany with dark stain; 13"h; 7.5"w (old split/repair on return)NOTE: Apologies, we cannot approve bidders during the auction.



153: (on 3) LIGHTING ITEMS incl. RUSH LAMP

USD 500 - 700

iron and wood rush lamp with spring clip, 9.5"h, round wood base 3.5"diam; a small brass oil lamp with high tint of copper, 9"; small pierced tin and glass onion lantern, 11" incl. handleCollection of G.W. SamahaNOTE: Apologies, we cannot approve bidders during the auction.



154: (3) SANDWICH GLASS FLUID LAMPS

USD 500 - 700

19th c., (2) double-overlay cut to clear, one deep cranberry, the other light cranberry; each 12"h; double overlay white cut to cobalt, quatrefoil pattern on a opalescent white glass column base, 13"h, not drilled Collection of G.W. SamahaNOTE: Apologies, we cannot approve bidders during the auction.



155: (on 3) SANDWICH GLASS COBALT CUT-TO-CLEAR OIL LAMP

USD 400 - 600

19th c. double overlay glass, blue and white to clear, on blue milk glass base, not drilled, 14"h; along with a yellow glass oil lamp, 13" (square base with corner chips); and a clear glass lamp, 13.5" (font glued to base)Collection of G.W. SamahaNOTE: Apologies, we cannot approve bidders during the auction.



156: NEW ENGLAND WINDSOR BOW-BACK ARMCHAIR

USD 1,000 - 1,500

knuckle arms, saddle seat, turned splayed legs joined by H-stretcher, 39"h; seat 18"hCollection of G.W. SamahaNOTE: Apologies, we cannot approve bidders during the auction.



157: PAINTED CAST IRON CAT DOORSTOP

USD 600 - 800

original paint, 12.5"h; base 7.5"wFamily note: "Bill's, from the farm in Milan (Ohio)"Collection of G.W. SamahaNOTE: Apologies, we cannot approve bidders during the auction.

THE AMERICANA COLLECTION OF G. W. SAMAHA



158: BOSTON CHIPPENDALE MAHOGANY OX-BOW, FALL-FRONT DESK

USD 3,000 - 5,000

four graduated drawers with original brass, bold ball and claw feet; fine fitted interior with secret compartment, 45.5" h; 42" w; 24"dCollection of G.W. SamahaNOTE: Apologies, we cannot approve bidders during the auction.



159: PENNSYLVANIA DECORATED TOLEWARE LIGHTHOUSE COFFEE POT

USD 1,200 - 1,500

bird and floral decoration, 11"hCollection of G.W. SamahaNOTE: Apologies, we cannot approve bidders during the auction.



160: PAINTED TOLEWARE DOCUMENT BOX

USD 1,000 - 1,500

dome-top, floral decoration, 7.5"h; 10"w; 6"dweb upCollection of G.W. SamahaNOTE: Apologies, we cannot approve bidders during the auction.



161: (on 2) TOLEWARE MUG IN RED

USD 700 - 900

4.25"h; along with a small lidded pitcher, decoration on black ground, 4"hCollection of G.W. SamahaNOTE: Apologies, we cannot approve bidders during the auction.



162: DECORATED TOLEWARE LIGHTHOUSE COFFEE POT

USD 800 - 1,200

floral decoration, 11"Collection of G.W. SamahaNOTE: Apologies, we cannot approve bidders during the auction.



163: (on 4) GROUP OF PAINTED TOLEWARE

USD 800 - 1,200

(3) trays, all octagonal; the largest (vertical line of paint loss where joined at center) 17.5" by 12"; 12" by 8.5" and 9" by 6"; along with 5.5"an oval tea caddy, 5.5"h Collection of G.W. SamahaNOTE: Apologies, we cannot approve bidders during the auction.



164: NEW ENGLAND WILLIAM AND MARY TIGER MAPLE BUTTERFLY DINING TABLE

USD 6,000 - 8,000

old surface, bold tiger maple, block and turned legs joined by stretcher, 28.5"h; 48"w; leaf 15.5"; when open 48" sq.Collection of G.W. SamahaNOTE: Apologies, we cannot approve bidders during the auction.



165: (on 4) EARLY KITCHEN ITEMS

USD 400 - 600

(2) 19TH C. ROLLING PINS, one tiger maple, 17"; the other, 17"; along with (2) wooden handled ONION CHOPPERS, one with tiger maple handle and heart cut-out blade sgn. J.SUTTONCollection of G.W. SamahaNOTE: Apologies, we cannot approve bidders during the auction.

THE AMERICANA COLLECTION OF G. W. SAMAHA



166: on (3) TWO WALKING STICKS

USD 500 - 700

the first twist carved with carved bone, clenched fist handle and copper end cap; 37"; along with a tiger maple walking stick, 35"; and a CARVED BILLY CLUB with carved clenched fist (piece chipped out of bottom, nail holes and age crack)Collection of G.W. SamahaNOTE: Apologies, we cannot approve bidders during the auction.



167: on (2) NATIVE AMERICAN LADLE AND POUNDING STONE

USD 400 - 600

ash wood scoop, poss. Iroquois, 10"; 3.5"w; along with a spiral fossil, 2.5 by 4 by 4" (remnant of red collection number)Collection of G.W. SamahaNOTE: Apologies, we cannot approve bidders during the auction.



168: (on 17) GROUP OF VARIOUS IRON AND COPPER IMPLEMENTS

USD 300 - 500

ladles, small implements.....Collection of G.W. SamahaNOTE: Apologies, we cannot approve bidders during the auction.



169: DIMINUTIVE NEW ENGLAND WILLIAM AND MARY PAINTED CHEST

USD 3,000 - 5,000

poss. Taunton, Massachusetts, on original high ball feet; written on back TaunTing...(se photo); 31"h; case 28.5" case; 17.5" case depth; 30.5"w; 18"dCollection of G.W. Samaha See Jobe, Sullivan, O'Brien, Harbor & Home, Furniture of Southeastern Massachusetts 1710-1850, pg. 174 plate # 59;NOTE: Apologies, we cannot approve bidders during the auction.



170: NEW ENGLAND WILLIAM AND MARY PAINTED CHEST

USD 2,000 - 4,000

17/18th c., two over three long drawers; high ball ball feet, 38"h; 36"w; 19"dCollection of G.W. SamahaNOTE: Apologies, we cannot approve bidders during the auction.



171: NEW ENGLAND WILLIAM AND MARY PAINTED BLANKET CHEST

USD 3,000 - 5,000

poss. Taunton, two working, two false drawers, original high compressed bun feet, 43.25" h; 36"w; 17.75" d; top 37.5" w; 18" ; monogramed MF (Madeleine Fisher, Bill's long-time partner)Collection of G.W. SamahaNOTE: Apologies, we cannot approve bidders during the auction.



172: (2) 19TH C. QUILTS

USD 400 - 600

a SUNFLOWER AND TULIP DESIGN on white ground; 84" by 66" ; along with a MULTI-COLORED STAR QUILT with large central starburst and smaller stars at perimeter, banded border, on white ground; 84" squareFrom the collection of G.W. Samaha and Madeline FisherNOTE: Apologies, we cannot approve bidders during the auction.

THE AMERICANA COLLECTION OF G. W. SAMAHA



173: 19TH C. PENNY RUG, MOUNTED AND FRAMED

USD 500 - 700

26"h; 40"w; framed under plexiglass 32" h; 46"wCollection of G.W. SamahaNOTE: Apologies, we cannot approve bidders during the auction.



174: PENNY QUILT / BED RUG

USD 400 - 600

signed and dated A.C. Bowen 88; a felted wool coverlet with applique penny round flowers, shaped and pinked edging on black ground; 51" x 74"From the collection of G.W. Samaha and Madeline FisherNOTE: Apologies, we cannot approve bidders during the auction.



175: (3) 19TH C. QUILTS

USD 300 - 500

applique rosebud on vine on white ground; 82" sq. (shadow discoloration on back, small spots of discoloration on back); along with an oak leaf and reel on ivory ground; 84" sq. (small spots of discoloration); and a quilt with a large central foliate decoration with tulip border on white ground, has splits for bed posts; 96" sq. (minor discoloration)Collection of G.W. Samaha and Madeleine FisherNOTE: Apologies, we cannot approve bidders during the auction.



176: UNUSUAL SOUTHERN CHIPPENDALE WALNUT 3-PART BLANKET CHEST

USD 1,500 - 2,000

prob. Virginia, in old color, two drawers, on applied bracket base, 32"h; case 48"w; 19"d' top 49.5"wCollection of G.W. SamahaNOTE: Apologies, we cannot approve bidders during the auction.



177: (on 3) TWO 19TH C. BED COVERINGS

USD 300 - 500

a deep blue and red wool coverlet with geometric design and fringe; 82" sq., not incl. fringe (few spots of stitched repairs); along with a wool blue and white gingham bedspread, 64" x 78" (some spots of stitched repairs); and a central block quilted, diamond on blue and green ground with blue backing; 82" sq.Collection of G.W. SamahaNOTE: Apologies, we cannot approve bidders during the auction.



179: MARY KING'S DECORATED TIGER MAPLE VALUABLES BOX

USD 400 - 600

hinged lid, penwork decoration with floral swags, farm scenes, and script poetic inscriptions; pencil notations on interior; 3"h; 12"w; 7.5"dCollection of G.W. SamahaNOTE: Apologies, we cannot approve bidders during the auction.



180: PENNSYLVANIA DUTCH DECORATED OVAL BOX

USD 300 - 500

with original green paint,etched floral decoration with swag on lid, initialed and dated on bottom; G F D / 1824; 2.5"h; 9"w; 5"dCollection of G.W. SamahaNOTE: Apologies, we cannot approve bidders during the auction.

THE AMERICANA COLLECTION OF G. W. SAMAHA



181: on (5) EARLY ROUND AND OVAL LIDDED SHAKER BOXES

USD 300 - 400

(2) round in original green paint; one measures 2"h x 6"diam.; the other 3"h x 5" diam.; round wood; 3"h x 7" diam.; oval in light wood; 2.25"h x 6.25"w x 4"d; tall oval in darker stain; 3"h; 4.5"w; 3"dCollection of G.W. SamahaNOTE: Apologies, we cannot approve bidders during the auction.



182: on (5) EARLY SMALL SHAKER BOXES

USD 400 - 600

oval with original green paint; 2"h; 6"w; 4.5"w; smaller oval in green paint (paint is refreshed); 1.75"h; 4.75"w; 3.5"d; wood stained egg shaped; 2.75"h; 6"w; 3.75"d; small wood stained oval; 1.5"h; 3.75"w; 2.75"d (stain scuffed on top, age separation around top band); tiny round box in original green paint; 1.5"h; 1.25" diam. (black stain - possibly paint - on top, some scuffs, wear around nail holes)Collection of G.W. SamahaNOTE: Apologies, we cannot approve bidders during the auction.



183: SMALL PAIR OF CAST IRON RECUMBENT LIONS

USD 600 - 800

early 19th c., glass eyes; 4.75"h; 7"wCollection of G.W. SamahaNOTE: Apologies, we cannot approve bidders during the auction.



184: (2) 20th C. REDWARE LIONS, ARTIST SIGNED

USD 300 - 500

sgn. and dated, LB 1981 (Lester Breininger, Robesonia, Pennsylvania); earthenware lion in sienna and brown ; 8"h; 10"l (a few small glaze chips on mane); along with a Turtle Creek Ohio redware pottery lion, sgn. and dated on feet, Cathy Gatch, 1989 / Turtle Creek Potters / Museum Piece; 11"h; 14"l (some small scuffs or glaze skips in mane)Collection of G.W. SamahaNOTE: Apologies, we cannot approve bidders during the auction.



185: PENNSYLVANIA LOW-BACK PAINTED WINDSOR ARMCHAIR

USD 700 - 900

19th c., low barrel back, in old red paint with gold enhancement, splayed turned legs joined by stretcher, 29.5"h; saddle seat 18"h; 25"wCollection of G.W. SamahaNOTE: Apologies, we cannot approve bidders during the auction.



185A: PENNSYLVANIA LOW-BACK WINDSOR ARMCHAIR

USD 800 - 1,200

Almost matches the previous lot low barrel-back with splayed turned legs joined by stretcher, 29.5"h; saddle seat 18"h; 25"w From the collection of G.W. Samaha (Bill feels this chair is extremely comfortable, and all are urged to try it.)NOTE: Apologies, we cannot approve bidders during the auction.



186: (on 2) SMALL SCRIMSHAW WHALEBONE TABLE FRAME

USD 400 - 600

black lacquered back, 8" by 6"; opening 5" by 3.5"; along with an INLAID CARVED WOOD MIRROR, old glass, opening 8" by 6"; total 10.75 by 10" From the collection of G.W. SamahaNOTE: Apologies, we cannot approve bidders during the auction.

THE AMERICANA COLLECTION OF G. W. SAMAHA



187: EARLY PAINTED LONG PINE BENCH

USD 700 - 900

19"h; 70"w; 21"d From the collection of G.W. Samaha (this was Bill's coffee table in his study) NOTE: Apologies, we cannot approve bidders during the auction.



188: (on 8) GROUP OF WROUGHT IRON IMPLEMENTS

USD 400 - 600

(2) long handled forks, 28" and 16", one signed F.B.S.CANTON.0. PAT. JAN. 26 86; large pair of tongs, 18"; (4) spatulas, 14" to 18", one signed D.ROHRER; and a scraper with twisted handle, 7.5" From the collection of G.W. Samaha NOTE: Apologies, we cannot approve bidders during the auction.



189: (on 6) GROUP OF VARIOUS WOOD ITEMS

USD 600 - 800

a 19th c. carved and painted yellow warbler perched on twig, 7.5" (remainder of support missing, some paint loss); a small painted hanging wall pocket, 6"h, 5.5"w; a 19th c. wood keg tap #2, partial paper label Redlich Mfg. Co., Chicago, 8.5"; carved wood butter mold spatula, a incised pattern to one side, reverse with carved initials..?.. PW, 10"; a round Shaker box, the lid with incised floral design and coin slot; 2"h; 4.5"diam.; and a 20th c. carved and painted trout, sgn. Gorka '84/AS-1; 17", mounted on wood base NOTE: Apologies, we cannot approve bidders during the auction.



190: 19TH C. CAST IRON ARMCHAIR

USD 500 - 800

pierced back with lily of the valley design, 32.5"; 27"w; seat 16"h, 20"w Collection of G.W. Samaha NOTE: Apologies, we cannot approve bidders during the auction.



191: PAIR OF VICTORIAN CAST IRON SIDE CHAIRS

USD 700 - 900

old green paint, 3-legged, 33"h; 14"at widest Collection of G.W. Samaha NOTE: Apologies, we cannot approve bidders during the auction.



192: FEDERAL GILT AND EGLMISE MIRROR

USD 700 - 900

reverse painted tablet of urn surrounded by florals, 37.5"h; 21.5"w; 26"w at top Collection of G.W. Samaha NOTE: Apologies, we cannot approve bidders during the auction.



193: (on 4) VARIOUS LIGHTING ITEMS

USD 400 - 600

pair of tin wall candle sconces, 13"h, 6"w; a 6-light chandelier (never electrified), 23"; 23"at widest; and another tin 4-light reflecting hanging light, 12"h; 16" at widest; and a wrought iron penny-foot, double-light floor candle stand (not period) with group of (18) hand-dipped old candles, 63"h Collection of G.W. Samaha NOTE: Apologies, we cannot approve bidders during the auction.

THE AMERICANA COLLECTION OF G. W. SAMAHA



194: (on 19) VARIOUS SAILOR'S WHALEBONE OBJECTS

USD 500 - 700

COCONUT AND WHALEBONE WATER DIPPER 12.5" handle; along with a walrus bone and mahogany ROLLING PIN, 14"; (2) sailor's whalebone sail pressers, one initialed, 5" and 5.5"; and (15) whale bone various little fids, two with clasped fist, one of those with inlaid heart Collection of G.W. Samaha NOTE: Apologies, we cannot approve bidders during the auction.



195: PENNSYLVANIA PAINTED WINDSOR BENCH

USD 800 - 1,200

splayed, boldly turned legs joined by stretcher, 28" h; 53.5" w; seat height 16" Collection of G.W. Samaha NOTE: Apologies, we cannot approve bidders during the auction.



196: ANTIQUE ENGLISH OAK JOINT STOOL

USD 300 - 500

16"h; 17"w; 14"d Collection of G.W. Samaha NOTE: Apologies, we cannot approve bidders during the auction.



197: DIMINUTIVE ANTIQUE OAK WILLIAM AND MARY GATE-LEG TABLE

USD 600 - 800

19"h; 23.5"w; 9"d; when open 23.5 by 27" Collection of G.W. Samaha NOTE: Apologies, we cannot approve bidders during the auction.



198: COPPER RUNNING HORSE WEATHERVANE

USD 1,500 - 2,500

19th c., good verdigris patina, attrib. A.L. Jewell Co., Waltham, Massachusetts 26.5" by 17"h; mounted on wood plinth 24" by 3"h Collection of G.W. Samaha NOTE: Apologies, we cannot approve bidders during the auction.



199: BLIND DOOR SECRETARY TOP

USD 400 - 600

c. 1830, original surface, pair of paneled doors with pinwheel carving flanked by carved columns; the interior with twelve various sized compartments, 36.5"h; 37.75"w; 11"d Collection of G.W. Samaha NOTE: Apologies, we cannot approve bidders during the auction.



200: CHIPPENDALE MAHOGANY MIRROR

USD 400 - 600

old surface, original glass, 38" h; 19.5" w Collection of G.W. Samaha NOTE: Apologies, we cannot approve bidders during the auction.

THE AMERICANA COLLECTION OF G. W. SAMAHA



201: (on 2) MASONIC ETCHED COIN SILVER PENDANT

USD 500 - 700

one side etched with Freemason George Washington, the other side with Masonic symbols, 2.5" by 2"; along with a large BRASS MOUNTED FINIAL with applied, 4-sided antique etched brass surround, one side AT THE SWAN/THE FRIENDLY SOCIETY, WAS INSTITUTED APRIL 24 1775....another side with AMICITIA REGNATO CUM NOVIS...(reign with new friendship), the third side with a crescent moon... and last side, THE KIND SAMARATIN; 10"h; round brass base 4.5"diam.NOTE: Apologies, we cannot approve bidders during the auction.



202: (12) VIBRANT SHOPPING BAGS

USD 20 - 40

incl. Saks Fifth Avenue, Bloomingdales, Filene's; some Christmas, some works of art....In a box with Madeline Fisher's textiles. These were too fun to toss away.NOTE: Apologies, we cannot approve bidders during the auction.



203: (on 6) EARLY FLINT LIGHTER AND PIPES

USD 300 - 400

iron and brass, 3"h; 6 by 1.5"; along with (2) white clay pipes, 16"; (1) red clay, 10"; (1) Meershaum pipe, 6.5"; and a little bone handled jack knife, 3"Collection of G.W. Samaha NOTE: Apologies, we cannot approve bidders during the auction.



204: (on 3) FEDERAL MAHOGANY POLE SCREEN STAND

USD 300 - 400

old surface; spider legs with spade feet, 53" (sans screen); along with a DECORATED BELLOWS; and a BRASS BED WARMER (sans pole)Collection of G.W. SamahaNOTE: Apologies, we cannot approve bidders during the auction.



205: NEW ENGLAND CHIPPENDALE MAHOGANY WING CHAIR

USD 1,500 - 2,500

straight legs joined by stretcher, 46"h; 28"seat width; seat 15"hCollection of G.W. SamahaNOTE: Apologies, we cannot approve bidders during the auction.



206: BENCH-MADE COLONIAL-STYLE OAK TWO-PART CABINET

USD 1,200 - 1,500

branded R&T / 1992 CXXVIII, TIC within a heart; black painted enhancements, 57"h; 47.5"w; 22"dCollection of G.W. SamahaNOTE: Apologies, we cannot approve bidders during the auction.



207: QUEEN ANNE-STYLE MAHOGANY MARBLE TOP CONSOLE TABLE

USD 700 - 900

branded WBP and sgn. William Brien Pierce built April 1987, 30"h; 43"w; 20"dCollection of G.W. SamahaBill encouraged and supported contemporary gifted cabinetmakers and craftspeople working in the styles of the American past. Pierce is an Ohio cabinetmaker of exceptional skill.NOTE: Apologies, we cannot approve bidders during the auction.

THE AMERICANA COLLECTION OF G. W. SAMAHA



208: NEWPORT CHIPPENDALE-STYLE MAHOGANY BLOCK-FRONT CHEST

USD 1,500 - 2,500

maker signed on backboard Wm. Brien Pierce 1993 high quality bench-made, four drawers with shell carving, bracket base; 34"w; 34"h; 17.75"d Collection of G.W. Samaha NOTE: Apologies, we cannot approve bidders during the auction.



209: PHILADELPHIA CHIPPENDALE-STYLE MAHOGANY ARMCHAIR

USD 1,500 - 2,000

high quality bench-made, slip seat and back rail branded WBP (William Brien Pierce); shell carving to crest and knees; back 41.5"h; seat 16"h; 23"w Collection of G.W. Samaha NOTE: Apologies, we cannot approve bidders during the auction.



210: pair of bench-made mahogany arm chairs

USD 800 - 1,200

branded WBP / Built 1982; also signed in pencil William Brien Pierce leather upholstered back and seat with brass studs, open arms, cabriole legs ending in pad feet joined by block and turned stretchers; 35.5"h; seat 15.5"h; 22"w Collection of G.W. Samaha NOTE: Apologies, we cannot approve bidders during the auction.



211: BENCH-MADE PHILADELPHIA-STYLE MAHOGANY DRESSING TABLE

USD 1,000 - 1,500

high quality bench-made, branded Built Dec. 1983 / WBP; also pencil signed Wm Brien Pierce; ball and claw feet, 28.5"h; case 29.5"w; 19.25" case depth; 35"w top; 23.25"w top Collection of G.W. Samaha NOTE: Apologies, we cannot approve bidders during the auction.



212: (on 2) BENCH-MADE MAHOGANY WALL SHELF

USD 400 - 600

branded WBP (William Brien Pierce), high quality bench-made, dovetailed with scalloped sides, three shelves; 31"h; 24"w; 8"d; along with a bench-made CUTTLERY BOX, two compartments, one with mid-way lid; 6.5, incl. cut-out handle; 18"w; 10"d Collection of G.W. Samaha NOTE: Apologies, we cannot approve bidders during the auction.



213: BENCH-MADE QUEEN ANNE-STYLE, SPANISH-FOOT ARMCHAIR

USD 500 - 700

rolled arms, rush seat, 42"h; seat 18"h; 25"h Collection of G.W. Samaha NOTE: Apologies, we cannot approve bidders during the auction.



214: COLONIAL-STYLE COPPER 8-LIGHT CHANDELIER

USD 300 - 400

mid-20th c., hammered design, two tiers, each with (4) candlearms; string tag Made by Howard F. Dautrech, Mulberry Park, Bucks County. Penna (signed) 1964, 30"h; 22"diam. at widest (never electrified) Collection of G.W. Samaha NOTE: Apologies, we cannot approve bidders during the auction.

THE AMERICANA COLLECTION OF G. W. SAMAHA



215: (5) VARIOUS PAINTED PLOVER DECOYS

USD 500 - 700

20th c., one with partially open wing, sgn. Gibian, on metal stand, 12"; the other, base inscribed PLOVER/LAWRENCE and signed S.RIFFE, 12"; another sgn. WALKER, 12" on stand; another, sgn. H.V.Shourder/1977, 10" on stand; the last, older, as is, sans stand, head re-attached, part of beak missing, 5"h, 11"longCollection of G.W. SamahaNOTE: Apologies, we cannot approve bidders during the auction.



216: LARGE PORCELAIN JARDINIERE

USD 700 - 900

19th c., raised lily, butterfly and trumpet vine decoration, 20" h; top opening 16"; 21"at widestCollection of G.W. SamahaNOTE: Apologies, we cannot approve bidders during the auction.



217: (4) SETS OF EIGHT PERIOD BRASS DRAWER HARDWARE

USD 500 - 700

an ornate set of eight oval brass with embossed head, 4" a set of (8) oval brass with embossed American eagle, E Pluribus Unum, 3"a set of (8) oval brass with embossed recumbent lion, 2.25"a set mounted on board of (8) oval brass with embossed beehive and NOTHING WITHOUT LABOR, 3.25" and (4) brass escutcheons all with bale handles and pinsCollection of G.W. SamahaNOTE: Apologies, we cannot approve bidders during the auction.



218: LOT OF BRASS AND WOOD FINIALS

USD 400 - 600

various sizeswood: (1) pair; (3) sets of three; (6) singles, odds and endsbrass: (3) pairs; (2) sets of three; (5) singlesCollection of G.W. SamahaNOTE: Apologies, we cannot approve bidders during the auction.



219: LARGE LOT OF VARIOUS BRASS FURNITURE HARDWARE

USD 400 - 600

escutcheons, and various drawer hardwareCollection of G.W. SamahaNOTE: Apologies, we cannot approve bidders during the auction.



220: NEW ENGLAND SMALL PAINT DECORATED BLANKET CHEST

USD 400 - 600

subtle feathered paint; with till, 20.5"h; 38"w; 15.5"dCollection of G.W. SamahaNOTE: Apologies, we cannot approve bidders during the auction.



221: PENNSYLVANIA WINDSOR ARMCHAIR

USD 300 - 500

painted white; knuckle arms; 36.5"h; seat 15.5"h; 21"wCollection of G.W. SamahaNOTE: Apologies, we cannot approve bidders during the auction.

THE AMERICANA COLLECTION OF G. W. SAMAHA



222: (on 5) VARIOUS IRON GATE WEIGHTS

USD 300 - 400

one melon-form in green paint, 6"; iron pine cone, 6"; tassel on chain, 5" h.; Verdigris Victorian head, 4"h; and a bell-shaped weight, 6.5", 4.5"diam. Collection of G.W. Samaha NOTE: Apologies, we cannot approve bidders during the auction.



223: (on 4) SMALL REVERSE PAINTED MIRROR AND MIRROR FRAMES

USD 300 - 500

reverse painted panel of basket of fruit, 20" by 10.5" (some paint loss to black paint on columns); 18th c. VENEERED WALL MIRROR, original glass and backboard (silvering loss; veneer lifting), 16 by 11"; a TIGER MAPLE FRAME (with old glass), 14 by 12"; an EBONIZED FRAME with applied whalebone corners, 16 by 13" Collection of G.W. Samaha NOTE: Apologies, we cannot approve bidders during the auction.



224: (on 5) PAINTED CAST IRON FAWN DOORSTOP, TAYLOR COOK

USD 400 - 600

No. 6 1930, original paint, 10"h; an Austrian bronze parrot on swing (repainted), parrot 6.5"; a painted cast iron ram doorstop (paint loss), 8"h, 10"w; (2) painted iron bottle openers, a goat and a man hanging onto a palm tree, 4.5" Collection of G.W. Samaha NOTE: Apologies, we cannot approve bidders during the auction.



225: (on 12) GROUP OF EGLOMISE GLASS PANELS

USD 400 - 600

(2) mirror panels, one gilt landscape mirror panel, 7 by 19"; and a small mirror panel with stars, 3.5 by 10.5"; clock panels: a Levi Hutchins/Concord face surround (minor paint loss), 11.5 by 9.25"; an American eagle and swag panel, 5.25 by 8" (paint loss); a vase shaped panel (not period), 12"h; 9.5" at widest; a throat panel with basket of fruit, 11"h, 3"w at bottom; Howard banjo clock door and throat panel (not period); and an unpainted throat mirror; also (3) clock panels, as is, cracked and paint loss Collection of G.W. Samaha NOTE: Apologies, we cannot approve bidders during the auction.



226: TEXTILES/CLOTHING: LOT OF GOOD LACE AND MORE

USD 400 - 600

black fringed shawl, (two applied roundels missing); lace handkerchiefs and collars; finely embroidered collar and matching waist sash Madeleine Fisher, G.W.'s partner, dealt in textiles, among other things. NOTE: Apologies, we cannot approve bidders during the auction.



226A: 19TH C. TEXTILES/CLOTHING

USD 300 - 500

Christening dresses, booties and bonnets; (3) Edwardian ladies' underpants; bloomers with lace borders NOTE: Apologies, we cannot approve bidders during the auction.



226B: (on 7) ANTIQUE WOMENS' CLOTHING LOT

USD 400 - 600

a two piece silk taffeta Victorian outfit, skirt and jacket with bustle tail, pleated detail (tear to shoulder, repairs some staining and stitch loss); a Victorian evening dress, cream silk brocade with black lace trim, with label B. Altman & Co., NY, (stains); two cream satin wedding dresses, early 20th c., one with long sleeves and embroidered/ seed pearl bodice (discoloration around pearls); the other simple silhouette with halter top, neck trimmed in mink and bustle flap (spotted staining on back of skirt); also a hooded wool capelet with mint green silk lining with matching green moire pouch with floral applique (some staining) Collection of Madeleine Fisher, G.W. Samaha's partner. NOTE: Apologies, we cannot approve bidders during the auction.

THE AMERICANA COLLECTION OF G. W. SAMAHA



226C: ASSORTED LOT OF ANTIQUE WHITE COTTON PERSONAL CLOTHING

USD 300 - 400

(12) dresses, infant to adolescent size with various trim and embroider; a gauze blouse with lace trim; (4) petticoats; (2) small pillow shams; pair of dress kid gloves; a dresser scarf and fringed scarf; various small ditty bags, and other small items Collection of Madeleine Fisher, G.W. Samaha's partner. NOTE: Apologies, we cannot approve bidders during the auction.



227: (on 13) GROUP OF VARIOUS UNRELATED METAL OBJECTS

USD 300 - 500

a pair of floral embossed brass garnitures, 9.5"h; a spatula with wood knob handle, brass collar etched in script Fra H. Jenkins, 13", flexible metal blade 2"w; a small oval copper lidded box, 1"h, 4"w; convex magnifying glass in brass pocket watch frame frame, 3"d (not incl. handle); pair small embossed brass fern leaves on stands, 2.5"h, 3"w; an oval brass miniature frame containing a paper clock label Joshua Wilder, Watch and Clock Maker, South Parish, Hingham, 4" by 3"; pair of Federal eagle embossed brass drawer plates, 2" by 3"; (2) brass stencils, QUEEN and WELCOME DAINTY, 3" by 10"; and an early stone inkwell, 1.5"h, 2"sq. NOTE: Apologies, we cannot approve bidders during the auction.



228: (on 12) EPHEMERA LOT incl. BOOKS

USD 300 - 400

framed script calligraphy Human Prudence, faded attached note on reverse "Printed in Nathaniel Low's Almanac for 1772.....Madeline"; 11.5 by 7 in.; a leather covered book of beautiful script poems and notations dating in the 1830's, perhaps some original poems, 8" by 6.5"; small paper covered handwritten book Thomas Holkin's Poetical Extracts, 1831, 6" by 4"; (3) classroom paper rewards of merit 1841 and 1856 to Mary and Thomas Seal (the third faded); leather bound book, pub. Philadelphia 1810 in Dutch/German with watercolor title page dated 1818; a merchant's ledger of goods incl. silver from 1826; little Victorian book Sweet Forget Me-Not, "To my dear sweet Mary...Mother...1895"; a little Victorian paper book Nearer My God to Thee, Tuck & Sons, pub. to Her Majesty the Queen, inscribed "To Mother from Emma"; Ben Pearson's small bound sermon, publ. Boston, 1746, Rogers and Fowle, Queen Street next to the prison; three fragile unbound pages The Golden Goose, Fishers' Toy Books, Phil. and Baltimore (as is); a watercolor of Adam, Eve and the Serpent in the Garden sgn. A.White '81, 12 by 10 in., framed under glass; and a letter from a son to his mother in Troy NH, 1894 NOTE: Apologies, we cannot approve bidders during the auction.



229: CHINESE PORCELAIN TABLE LAMP

USD 300 - 500

baluster-form, deep mustard yellow glaze, footed metal base, three light, 32"h incl. amber glass finial NOTE: Apologies, we cannot approve bidders during the auction.



230: (on 3) 19TH C. FAMILY PHOTO ALBUM

USD 200 - 300

Burnham and Lowe family (leather album as is); along with (20) late 19th c. French colored photo tourist prints Constantinople, 6.5 by 9"; and a paper Larkin Soap Co. catalogue, 1900 incl. furniture and deals NOTE: Apologies, we cannot approve bidders during the auction.



231: UNRELATED METAL GROUP

USD 300 - 400

(2) early wrought iron door latches with brass knobs, one marked BRATT; a branding iron, R. LAWTON, 19"; (2) plum bobs, 3" and 2.5"; a long metal measuring stick, 30"; a wrought iron swinging lantern fixture; and (3) pairs of brass cupboard door latches, and four extra pieces; and (4) clock keys NOTE: Apologies, we cannot approve bidders during the auction.

THE AMERICANA COLLECTION OF G. W. SAMAHA



232: (on 8) MINIATURE CHIPPENDALE-STYLE TALL CHEST

USD 300 - 500

four graduated drawers, 15"h; along with a pair of child's black leather shoes; a geometric velvet pin cushion; a wood spool; (2) wood yarn winders; (6) wood knobs; a wood string instrument keyNOTE: Apologies, we cannot approve bidders during the auction.



233: (on 7) REMEMBRANCES: LITTLE TRANSFERWARE MUGS

USD 300 - 500

(2) canary mugs, "A Present for George", 2.25", the other with bird in branch, 2"; another, white, "A Present for George", 1.75"; (2) "George", 2.5"; along with a tiny bone implement with toothpick/fork and spoon etched "William", open 4", closed 3"; along with a 20th c. redware oval loaf dish William in yellow letters, sgn. Breining, 15.5"x 11"dNOTE: Apologies, we cannot approve bidders during the auction.



234: BENCH-MADE QUEEN ANNE-STYLE MAHOGANY WING CHAIR

USD 400 - 600

Collection of G.W. SamahaNOTE: Apologies, we cannot approve bidders during the auction.



235: (on 3) CHINESE EXPORT ROSE MANDARIN MUG

USD 300 - 500

19th c., 5.5"h; an ASIAN BRONZE OF RECUMBENT RAM with kanji signature, 9.5"; 6.5"h; a GLAZED POTTERY BOWL with flared rim, 3"h, 7" diam.NOTE: Apologies, we cannot approve bidders during the auction.



236: (on 2) PERSIAN TILE

USD 100 - 200

man on horseback, 8"sq.; along with a BRASS OIL LAMP with two hanging brass implements (one missing), electrified, 23"hNOTE: Apologies, we cannot approve bidders during the auction.



237: ANTIQUE PENCIL-POST, TESTER BED PARTS

USD 200 - 300

an unfinished pine headboard, (4) tall pencil posts, 86", and (4) testers; also with pair of side rails and end rail which seem not to fitCollection of G.W. SamahaNOTE: Apologies, we cannot approve bidders during the auction.



238: ANTIQUE REFERENCE BOOKS

USD 100 - 200

including Facing History, The Black Image in American Art 1710-1940, 1990; The Black Presence in the Era of the American Revolution, 1770-1800, Sidney Kaplan, 1973; Colonial Massachusetts Silversmiths and Jewelers, Patricia Kane, Yale, 1998; American Pewter, J.B. Kerfoot, Houghton Mifflin, 1924; Little by Little, Six Decades of Collecting American Decorative Arts, Nina Fletcher Little; The Rare Clock Collection of The Late Anthony J. Sposato, 2 vols, Bourne AuctionsThe library of G.W. SamahaNOTE: Apologies, we cannot approve bidders during the auction.

THE AMERICANA COLLECTION OF G. W. SAMAHA



239: ANTIQUE REFERENCE BOOKS

USD 40 - 50

various subject matters, antiques and art



240: NOTE: LOT NUMBERS JUMP TO 300

USD 100 - 200

Items starting with lot number 300 are selected additions.



300: BOSTON CHIPPENDALE MAHOGANY BLOCK-FRONT CHEST

USD 30,000 - 50,000

18th c.; overhanging molded top, four drawers with original bat wing brass, raised on ball and claw feet, 33.5"h; case 32"w; shaped top 36"w; 22"dPurchased Israel SackFrom the Fuller estate, Wethersfield, Connecticut. CRN Auctions sold the Fuller collection of marine chronometers in January, 2019. NOTE: Apologies, we cannot approve bidders during the auction.



301: SIMON WILLARD ROXBURY MAHOGANY CASED TALL CLOCK

USD 12,000 - 18,000

moon-phase dial signed S. Willard; brass-capped fluted columns; on original ogee feet; 87"h (not incl. finials); 19"at widestFrom the home of a Maine family.NOTE: Apologies, we cannot approve bidders during the auction.



302: NEW HAMPSHIRE QUEEN ANNE CANDLE STAND

USD 600 - 800

Dunlap school, cut-corner top on delicate turned post, snake feet, 28"h; top 16.5 by16"wNOTE: Apologies, we cannot approve bidders during the auction.



303: NANTUCKET CHILD'S BRACE-BACK WINDSOR ARMCHAIR

USD 1,000 - 1,500

18th c., old black paint, scrolled ears, knuckle arms, splayed, turned legs joined by H-stretcher; 27"h; saddle seat 10"h; 12.5"wNOTE: Apologies, we cannot approve bidders during the auction.



304: PAIR OF NEW ENGLAND CONTINUOUS-ARM WINDSOR CHAIRS

USD 2,000 - 3,000

black paint, saddle seats; 37.5"h; turned legs joined by H-sgtretcher; seat 18"h; seat 17.5"wNOTE: Apologies, we cannot approve bidders during the auction.



305: FOLK ART STEEL AND LICENSE PLATE BASEBALL BATTER

USD 1,500 - 2,000

full figure batter holding copper NY bat; York World's Fair 1940 on belt; hat, shirt, trousers, and shoes made of New York license plates; strips of copper edging, all on steel figure, 42"h; 37"wNOTE: Apologies, we cannot approve bidders during the auction.

THE AMERICANA COLLECTION OF G. W. SAMAHA



306: NEW ENGLAND WILLIAM AND MARY GATE-LEG DINING TABLE

USD 3,000 - 5,000

old red paint; full-length, end to end drawer, boldly turned legs; 29" h; 50" l; 18.5" d; oval drop leaves 18.5"NOTE: Apologies, we cannot approve bidders during the auction.



307: MASSACHUSETTS MAHOGANY TALL CASE CLOCK, SHEPHERD

USD 5,000 - 7,000

sgn. on dial Warranted by Nath ShepherdNathaniel Shepherd (Dartmouth/New Bedford, Massachusetts, 1795-1882)90"tall (not incl. brass finials); 19.5"w at feetApprentice to John Bailey, Jr., Hanover, Mass. Along with a paper book, New Bedford Furniture in which a Kelly and Shepherd tall clock is pictured. After this partnership dissolved in 1823, Shepherd continued working in New Bedford.NOTE: Apologies, we cannot approve bidders during the auction.



308: CHIPPENDALE DENSE MAHOGANY DROP-LEAF TABLE

USD 2,500 - 3,500

molded top and cut-corner leaves; shaped skirt, delicate cabriole legs ending in ball and claw feet; 27.75"h; 34" by 12.75"w; rectangular leaves 11"; when open 34"sq.NOTE: Apologies, we cannot approve bidders during the auction.



309: 18th C. CHIPPENDLAE MAHOGANY ARMCHAIR

USD 2,000 - 3,000

poss. Maryland, with pierced splat, stop-fluted stiles; shaped and scrolled arms, cabriole legs ending in carved shell/hairy pad feet; original seat frame scribed XII; 37.5" h; 27.5"w arm to arm; seatrail 16.5"h, 24"w (back framed scribed XI) Clipping glued to frame: Avonville...Early brick (1760) manor house....just 5 miles from the center of Easton" (Maryland) where the chair is purported to originate, seems to be one of a set of twelve.NOTE: Apologies, we cannot approve bidders during the auction.



310: 18th C. NEW ENGLAND MAPLE COMB-BACK WINDSOR ARMCHAIR

USD 1,000 - 1,500

scrolled ears, shaped knuckle-arms, turned splayed legs joined by H-stretcher; 43.5" h; 25.5"w; 15.5"d; 18" seat heightNOTE: Apologies, we cannot approve bidders during the auction.



310A: GEORGIAN ROLLED PAPER OCTAGONAL TEA CADDY

USD 1,000 - 1,500

with shell and wood veneer, banded inlay and lidded compartment with bone knob; 5.25"h; 5.75"w; 5"dNOTE: Apologies, we cannot approve bidders during the auction.



310B: GEORGIAN RECTANGULAR SHELL TEA CADDY

USD 600 - 800

fitted interior with three compartments, two lidded and the center with circular cut-out, bone inlaid edging, brass bun feet; 5.75"h; 10.75"w; 5.25"hNOTE: Apologies, we cannot approve bidders during the auction.

THE AMERICANA COLLECTION OF G. W. SAMAHA



311: WILLIAM LESTER STEVENS (American, 1888-1969)

USD 2,500 - 3,500

village road, summer, Gloucester, Massachusettsgn. l. r. W. Lester Stevens o/c, 24 by 28 in.; framed 29 by 33 in.NOTE: Apologies, we cannot approve bidders during the auction.



312: EMILE ALBERT GRUPPE (American, 1896-1978)

USD 4,000 - 6,000

Winter landscape with covered bridge and villagesgn. l.r. Emile A. Gruppé o/c; 25 by 30 in.; original frame 31.5 by 36.5 in.Descended from a Connecticut couple who were close friends of the artist.Each sibling inherited several paintings from their parents.Several Gruppés from this family were sold by CRN Auctions in October 2021. This group is from another sibling.NOTE: Apologies, we cannot approve bidders during the auction.



313: EMILE ALBERT GRUPPE (American, 1896-1978)

USD 3,000 - 5,000

weighing the fishsgn. l.r. Emile A. Gruppésgn. and titled verso; o/c; 20 by 24 in.; original frame 26 by 30 in.Descended from a Connecticut family, friends of the artist.NOTE: Apologies, we cannot approve bidders during the auction.



314: EMILE ALBERT GRUPPE (American, 1896-1978)

USD 2,500 - 3,500

fall reflections, Vermont sgn. l.r. Emile A. Gruppésgn. and titled verso; o/c; 2 by 24 in.; original frame 27.5 by 31.75Descended from a Connecticut family, friends of the artist.NOTE: Apologies, we cannot approve bidders during the auction.



315: EMILE ALBERT GRUPPE (American, 1896-1978)

USD 3,000 - 5,000

Pier from 13th Southsgn. l.r. Emile A. Gruppétitled verso, o/c; 24 by 19.75 in; original frame 32.5 x 28.5 in.Descended from a Connecticut family, friends of the artist.NOTE: Apologies, we cannot approve bidders during the auction.



316: EMILE ALBERT GRUPPE (American, 1896-1978)

USD 3,000 - 4,000

rainy day, Vermontsgn. l.r. Emile A. Gruppésgn. and titled verso; o/c; 24 by 20 in.; original frame 31.5 by 27.5 in.Descended from a Connecticut family, friends of the artist.NOTE: Apologies, we cannot approve bidders during the auction.



317: EMILE ALBERT GRUPPE (American, 1896-1978)

USD 3,000 - 5,000

low tide, Gloucester, Massachusettsgn. l.r. Emile A. Gruppésgn., titled and dated 1961 verso o/c; 20 by 18 in.; original frame 24 by 26 in.Descended from a Connecticut family, friends of the artist.NOTE: Apologies, we cannot approve bidders during the auction.

THE AMERICANA COLLECTION OF G. W. SAMAHA



318: EMILE ALBERT GRUPPE (American, 1896-1978)

USD 2,500 - 3,500

drying the sailsgn. l.r. Emile A. Gruppesgn. and titled verso; o/b; 16 by 12 in.; original frame 22.5 by 18.5 in.Descended from a Connecticut family, friends of the artist.NOTE: Apologies, we cannot approve bidders during the auction.



319: CHARLES HAROLD DAVIS (American, 1856-1933)

USD 2,500 - 3,500

Winter morning in the woodsgn. and dated l.l. C H Davis 92o/c, 17 by 21 in.; framed 26 by 30 in.NOTE: Apologies, we cannot approve bidders during the auction.



320: JESSIE HAZEL ARMS BOTKE (American, 1883-1971)

USD 4,000 - 6,000

pair of floral still lifes with butterflysgn. l.r., Jessie Arms Botkeo/masonite, 16 by 12 in; framed 20 by 16 in.NOTE: Apologies, we cannot approve bidders during the auction.



321: GEORGE MARINKO (American/Connecticut), 1908-1989)

USD 600 - 900

Connecticut farm titled on reverse Southington Mountainsgn. l.l. Marinko; o/b; 19.75 by 25 in.; frame 25.25 by 34.5 in.NOTE: Apologies, we cannot approve bidders during the auction.



321A: J. FRANCIS MURPHY (American, 1853-1921)

USD 800 - 1,200

landscape with pondsngn. and dated l.l. J.Francis Murphy 82o/b; 8.5 by 10.5 in.; original gilt frame 13.5 by 16 in.NOTE: Apologies, we cannot approve bidders during the auction.



322: BUCKMINSTER FULLER (American, 1895-1983) AUTOGRAPH

USD 300 - 500

personal inscription and pencil sketch and of '...frequency...teasercity/geomdesic sphere' on restaurant placemat (The Chalet, Marshall, MN) inscribed in pencil "To Frankie/...thanks for...hospitality on the occasion of my visiting South West Minnesota University / March 13 1975/... Bucky Fuller"10 by 14 in; framed 11.5 by 14.5 in. Fuller invented the Geodesic Dome, the Dymaxion House and the three-wheeled Dymaxion Car, as well as hundreds of other designs, He was known as an architect, engineer, scientist, educator, designer, philosopher and poet. Admirers called him a "modern Leonardo Da Vinci." He believed design scientists, not politicians, solve problems. NOTE: Apologies, we cannot approve bidders during the auction.



323: 19TH C. SAILORS DOUBLE SHELL VALENTINE

USD 1,000 - 1,500

Forget Me Not, 8.5" octagonal mahogany caseNOTE: Apologies, we cannot approve bidders during the auction.

THE AMERICANA COLLECTION OF G. W. SAMAHA



323A: (2) BOSTON REVOLUTIONARY WAR MAPS, CHARLESTOWN AND BUNKER HILL

USD 800 - 1,200

A Plan of the Action at Bunker Hill on the 17th of June 1775; engraved for Stedman's History of the American War; publ. by the author April 12 1793; 20 by 17 in.; framed under glass 29 by 25.5 in.; "To front Page 127, Vol. 1" above the neatline upper right corner. Also marked below title "Engraved for Stedman's History of the American War, Published by the Author, April 12, 1793"; along with Sketch of the Action on the Heights of Charlestown June 17th 1775; copied by I.A. Chapman from the original sketch taken by Henry De Berniere of the 14th Regiment of Infantry, now in the hands of J. Cist. Esq.; engraved by Kneass Young & Co. for Analectic Magazine, publ. by M. Thomas, Philadelphia; 14 by 20.5 in.; framed 23 by 28.5 in.; NOTE: Apologies, we cannot approve bidders during the auction.



324: CHINESE EXPORT PORCELAIN PUNCH BOWL

USD 2,000 - 2,500

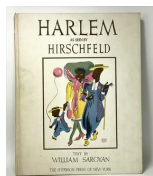
early 19th c., 7"h; 16"diam.NOTE: Apologies, we cannot approve bidders during the auction.



325: BENNINGTON EARTHENWARE POODLE

USD 800 - 1,200

holding a basket in his mouth, dark mustard glaze; 8"h; 8.5"longNOTE: Apologies, we cannot approve bidders during the auction.



326: BOOK: HARLEM AS SEEN BY HIRSCHFELD

USD 1,000 - 1,500

text by William SaroyanHyperion Press, New York, 1941limited edition of 1000 copiesNOTE: Apologies, we cannot approve bidders during the auction.



327: BOOK: TOMI UNGERER, FORNICON

USD 300 - 500

Tomi Ungerer (France, 1931-2019)published 1969, Rhinoceros Press, 1st edition; Introduction by John Hollander, and dedication print FOR ARLENE(45) loose lithographs on textured stock, plus (7) on graph paper, of line drawings of a mechano-erotic nature; 15 by 11.5"; in black slip-case folderNOTE: Apologies, we cannot approve bidders during the auction.



328: LARGE CHINESE SPINACH JADE/HARDSTONE BOWL

USD 1,200 - 1,800

20th c., flared rim, 18"diam.NOTE: Apologies, we cannot approve bidders during the auction.



329: CHINESE ORNATE CARVED JADEITE URN

USD 800 - 1,200

20th c., 13.5"h; 15"w; 7.5"dNOTE: Apologies, we cannot approve bidders during the auction.

THE AMERICANA COLLECTION OF G. W. SAMAHA



329A: CHINESE WALL PLAQUE

USD 500 - 700

20th c., still-life, reverse painted vases, carved floral arrangements and calligraphy 17.5 by 26 in.; hardwood frame 21 by 29 in. NOTE: Apologies, we cannot approve bidders during the auction.



330: (2) 14K GOLD WALTHAM POCKET WATCHES

USD 700 - 900

1. Hunter cased: guilloche monogrammed Keystone 14k case 5695635; second dial; A.W.W. co., Waltham Mass. 17 jewels, 22529424; 2"diam. (Knob does not open case) 2. Open cased: Roy 14k case 581230; second dial; A.W.W. co., Waltham, Mass. #15871245; Roman numerals; 25"diam. NOTE: Apologies, we cannot approve bidders during the auction.



331: (2) 14K POCKET WATCHES

USD 700 - 900

1. Waltham open face, 14k (silvered) 6111754; seconds dial; Waltham P.J. Bartlett, 19 jewels, #24845856, adj. temp; 1.75"diam. 2. Elgin, hunter case 14k, B.W.C.Co. 268811; seconds dial, Roman numerals; #114453; 1.75"diam. NOTE: Apologies, we cannot approve bidders during the auction.



332: (on 5) VARIOUS POCKET WATCHES

USD 500 - 700

1. Keystone 14k case 4634171; Regina, safety barrel, serial #9990270; seconds dial 1.25"diam. (front cover missing; hand missing on seconds dial) 2. Tavannes open case 14k, 45072/23; seconds dial; 17 jewels, Swiss Made #5100; 1.75"diam. 3. Swiss Made (on face), Dennison open case, gold plated #58659; works Syren Swiss Made; 2"diam. 4. Hampdon open case; Solidarity 14k, 107385; works Molly Stark, Canton O, #1168228, 1.25"diam. (hour hand missing; face stained) 5. Elgin hunter case Dueber 14k case #166119; works #3172822; 1 5/5"diam. (cover missing; all hand missing) NOTE: Apologies, we cannot approve bidders during the auction.



333: ROLLS ROYCE/ BENTLEY OVERSEAS TOURING SPARES KIT, No. 15

USD 600 - 800

list of parts Suitable for Bentley "R" type, Chassis Nos. B-2-RT.....; Silver Dawn; Silver Wraith; Continental Bentley; various items, wood case, 5.5"h; 29"w; 10"d NOTE: Apologies, we cannot approve bidders during the auction.



334: FOLKY CHIP-CARVED AND PAINTED EAGLE PLAQUE

USD 600 - 800

1920's, eagle with out-stretched wings on shield with 28 stars, 36"h; 36"w NOTE: Apologies, we cannot approve bidders during the auction.



335: MID-CEN. MODERN LARGE STERLING SILVER TRAY, YVAR PETERSON

USD 3,000 - 5,000

marked STERLING/Made by Yvar Peterson oval with open calla lily handles, 32"w (incl. handles) by 20"; 187 troy oz. Ivar joined is father Ole Bent Peterson in his Danish shop in 1942 and took over in 1950. NOTE: Apologies, we cannot approve bidders during the auction.

THE AMERICANA COLLECTION OF G. W. SAMAHA



336: (12) TIFFANY STERLING SILVER SERVICE PLATES

USD 5,000 - 7,000

marked Tiffany & Co./17630 makers 2005/ STERLING SILVER / 925-1000/ m;not monogrammed; 11"diam.; 250 troy oz.NOTE: Apologies, we cannot approve bidders during the auction.



337: LARGE CHASED STERLING SILVER FOOTED PITCHER

USD 800 - 1,200

hallmarked/5754; overall floral and scroll decoration; 15.5"h; 42.5 troy oz.NOTE: Apologies, we cannot approve bidders during the auction.



338: GORHAM STERLING SILVER REPOSSE JEWELRY BOX

USD 800 - 1,200

Gorham hallmark/B1430M; overall scrolling floral design; hinged lid; velvet lined with lift-out tray; 4"h; 8.5"w; 6.5"d; not weighedNOTE: Apologies, we cannot approve bidders during the auction.



339: SMALL RUSSIAN SILVER GILT SALVER

USD 400 - 600

hallmarked in Cyrillic; scalloped pierced edge, on five scrolling feet; 7" diam.; 8 troy oz.NOTE: Apologies, we cannot approve bidders during the auction.



340: ENGLISH SILVER LIDDED TANKARD

USD 1,000 - 1,500

hallmarked T.S. Seager 1864/London; 9.5"h; 11" (handle to spout), base 7"diam.; 47.5 troy oz. NOTE: Apologies, we cannot approve bidders during the auction.



341: PAIR OF ISFAHAN ANTIQUE CARPETS

USD 2,000 - 3,000

4'6" x 6'11"NOTE: Apologies, we cannot approve bidders during the auction.



342: BIDJAR CARPET

USD 2,500 - 3,500

vivid color, 5' 11" x 11' 8"NOTE: Apologies, we cannot approve bidders during the auction.



343: CAUCASIAN LIBRARY RUG

USD 2,000 - 3,000

5'8"x 10'8"NOTE: Apologies, we cannot approve bidders during the auction.

THE AMERICANA COLLECTION OF G. W. SAMAHA



344: CAUCASIAN SCATTER RUG

USD 800 - 1,200

5'5" x 7'6" NOTE: Apologies, we cannot approve bidders during the auction.



345: EXCEPTIONAL 19TH C. ROOMSIZE SERAPI CARPET

USD 10,000 - 15,000

13' by 16' NOTE: Apologies, we cannot approve bidders during the auction.



346: BIDJAR CARPET

USD 700 - 900

4'10" x 7'3" NOTE: Apologies, we cannot approve bidders during the auction.



347: SILK KASHAN

USD 400 - 600

3' x 8'3" NOTE: Apologies, we cannot approve bidders during the auction.



348: SHIRVAN SCATTER RUG

USD 500 - 800

3'7" x 5'4" NOTE: Apologies, we cannot approve bidders during the auction.



349: TURKISH PRAYER RUG

USD 300 - 500

4'6" x 3'11" NOTE: Apologies, we cannot approve bidders during the auction.



350: PAIR OF SAROUK MATS

USD 300 - 500

2' x 3' NOTE: Apologies, we cannot approve bidders during the auction.



351: CAUCASIAN PRAYER RUG

USD 300 - 500

3' x 4'5" NOTE: Apologies, we cannot approve bidders during the auction.

THE AMERICANA COLLECTION OF G. W. SAMAHA



352: KUBA RUNNER

USD 200 - 300

2'4" x 5'9" NOTE: Apologies, we cannot approve bidders during the auction.



353: 19TH C. CAUCASIAN SCATTER RUG

USD 300 - 500

3'1" x 5'5"